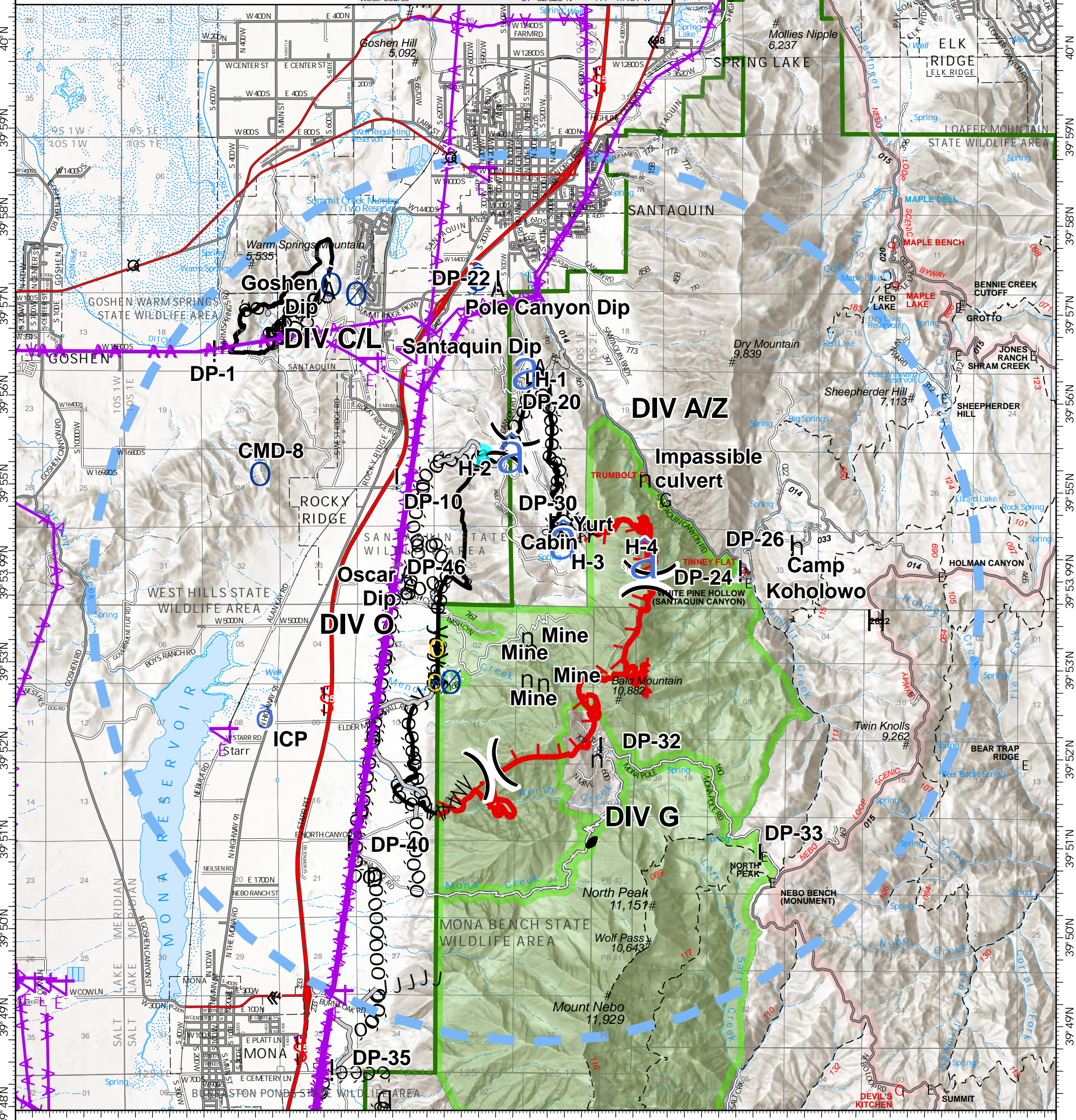


FeatureCategory	Label	LatWGS84_DDM	LongWGS84_DDM	FeatureCategory	Label	LatWGS84_DDM	LongWGS84_DDM
Closure		39° 50.617' N	111° 49.040' W	Helispot	H-1	39° 56.233' N	111° 46.982' W
Dip Site	Goshen Dip	39° 57.218' N	111° 49.768' W	Helispot	H-2	39° 55.292' N	111° 47.186' W
Dip Site	Oscar Dip	39° 54.030' N	111° 48.594' W	Helispot	H-3	39° 54.327' N	111° 46.413' W
Dip Site	Pole Canyon Dip	39° 57.262' N	111° 47.304' W	Helispot	H-4	39° 54.120' N	111° 45.231' W
Dip Site	Santaquin Dip	39° 56.368' N	111° 46.673' W	Incident Base		39° 57.274' N	111° 49.760' W
Division Break	A/Z - G Break	39° 53.982' N	111° 45.076' W	Incident Command Post ICP		39° 52.413' N	111° 50.639' W
Division Break	G - O Break	39° 51.838' N	111° 47.362' W	Repeater	CMD-8	39° 55.138' N	111° 50.773' W
Division Break	O - A/Z Break	39° 56.212' N	111° 46.743' W	Repeater	CMD-9	40° 05.318' N	111° 49.327' W
Drop Point	DP-1	39° 56.512' N	111° 51.356' W	Safety Zone		39° 52.800' N	111° 48.183' W
Drop Point	DP-10	39° 55.093' N	111° 48.675' W	Safety Zone		39° 53.181' N	111° 48.165' W
Drop Point	DP-20	39° 56.228' N	111° 46.780' W	Value at Risk		39° 55.128' N	111° 45.127' W
Drop Point	DP-22	39° 57.328' N	111° 47.221' W	Value at Risk		39° 54.502' N	111° 46.003' W
Drop Point	DP-24	39° 54.092' N	111° 43.648' W	Value at Risk		39° 51.969' N	111° 45.792' W
Drop Point	DP-26	39° 54.380' N	111° 42.896' W	Value at Risk		39° 55.381' N	111° 47.505' W
Drop Point	DP-30	39° 54.600' N	111° 46.422' W	Value at Risk	Cabin	39° 54.618' N	111° 46.419' W
Drop Point	DP-32	39° 52.091' N	111° 45.665' W	Value at Risk	Camp Koholowo	39° 54.382' N	111° 42.898' W
Drop Point	DP-33	39° 50.907' N	111° 43.328' W	Value at Risk	Mne	39° 52.820' N	111° 46.583' W
Drop Point	DP-35	39° 48.442' N	111° 49.543' W	Value at Risk	Mne	39° 52.866' N	111° 46.823' W
Drop Point	DP-40	39° 50.965' N	111° 49.321' W	Value at Risk	Mne	39° 53.196' N	111° 46.763' W
Drop Point	DP-46	39° 53.912' N	111° 48.766' W	Value at Risk	Mne	39° 53.335' N	111° 46.820' W
Hazard		39° 52.190' N	111° 49.098' W	Value at Risk	Payson Lakes G.S.	39° 55.501' N	111° 37.985' W
Hazard	Impassible culvert	39° 54.887' N	111° 44.837' W	Value at Risk	Yurt	39° 54.755' N	111° 46.318' W
Helibase		39° 57.354' N	111° 47.618' W	Water Source		39° 57.174' N	111° 49.395' W
				Water Source		39° 52.820' N	111° 47.964' W



0 0.5 1 1.5 2
Nautical Miles

ajb
9/20/2020 2048
Acres from IR and GPS
North American 1983 Datum.
Lat/Long Grid

D Closure	n Value at Risk	D Proposed Dozer Line
A Dip Site) Division Break	e Fire Break Planned or Incomplete
! Drop Point	Uncontrolled Fire Edge	Temporary Flight Restriction
G Hazard	Contained Line	Wilderness
Helibase	Completed Dozer Line	Forest Boundary
Helispot	Completed Hand Line	Microwave Towers
Incident Base	Road as Completed Line	Antenna Structure
Incident Command Post	Access or Improved Road	Transmission Lines
Repeater	Line Break Completed	
Safety Zone	Proposed Burnout	
Water Source		

PILOT MAP
William
UT-NWS-000891
9/21 Day
5,832 acres at 9/20/20 @ 0015

