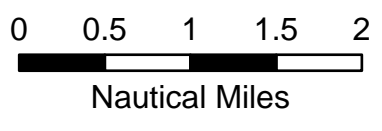
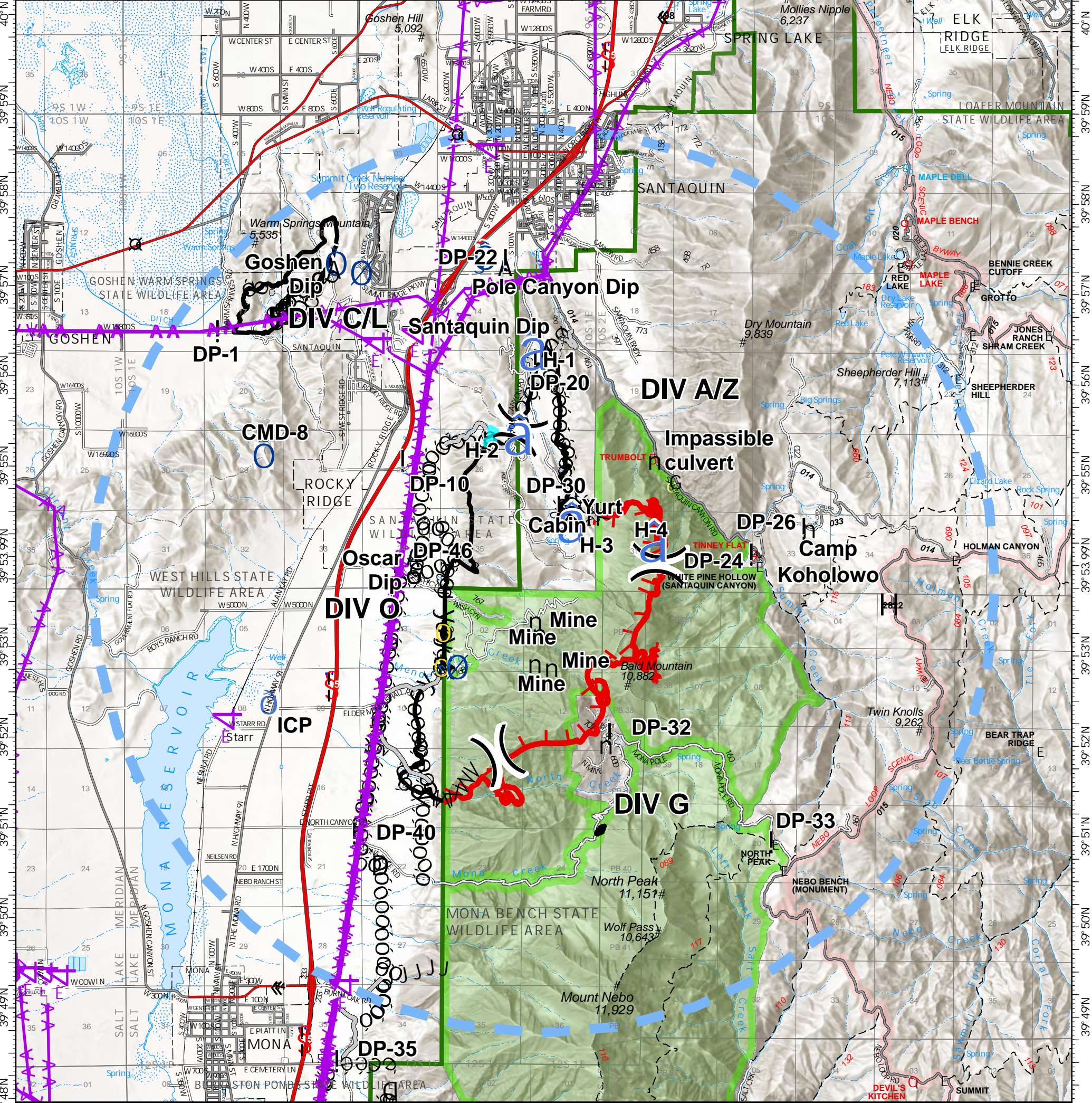


FeatureCategory	Label	LatWGS84_DDM	LongWGS84_DDM	FeatureCategory	Label	LatWGS84_DDM	LongWGS84_DDM
Closure		39° 50.617' N	111° 49.040' W	Helispot	H-2	39° 55.292' N	111° 47.186' W
Dip Site	Goshen Dip	39° 57.218' N	111° 49.768' W	Helispot	H-3	39° 54.327' N	111° 46.413' W
Dip Site	Oscar Dip	39° 54.030' N	111° 48.594' W	Helispot	H-4	39° 54.120' N	111° 45.231' W
Dip Site	Pole Canyon Dip	39° 57.262' N	111° 47.304' W	Incident Base		39° 57.274' N	111° 49.760' W
Dip Site	Santaquin Dip	39° 56.368' N	111° 46.673' W	Incident Command Post ICP		39° 52.413' N	111° 50.639' W
Division Break	A/Z - G Break	39° 53.982' N	111° 45.076' W	Repeater	CMD-8	39° 55.138' N	111° 50.773' W
Division Break	G - O Break	39° 51.838' N	111° 47.362' W	Repeater	CMD-9	40° 05.318' N	111° 49.327' W
Division Break	O - A/Z Break	39° 56.212' N	111° 46.743' W	Road Repair		39° 51.907' N	111° 49.153' W
Drop Point	DP-1	39° 56.512' N	111° 51.356' W	Safety Zone		39° 52.800' N	111° 48.183' W
Drop Point	DP-10	39° 55.093' N	111° 48.675' W	Safety Zone		39° 53.181' N	111° 48.165' W
Drop Point	DP-20	39° 56.228' N	111° 46.780' W	Value at Risk		39° 55.128' N	111° 45.127' W
Drop Point	DP-22	39° 57.328' N	111° 47.221' W	Value at Risk		39° 54.502' N	111° 46.003' W
Drop Point	DP-24	39° 54.092' N	111° 43.648' W	Value at Risk		39° 51.969' N	111° 45.792' W
Drop Point	DP-26	39° 54.380' N	111° 42.896' W	Value at Risk		39° 55.381' N	111° 47.505' W
Drop Point	DP-30	39° 54.600' N	111° 46.422' W	Value at Risk	Cabin	39° 54.618' N	111° 46.419' W
Drop Point	DP-32	39° 52.091' N	111° 45.665' W	Value at Risk	Camp Koholowo	39° 54.382' N	111° 42.898' W
Drop Point	DP-33	39° 50.907' N	111° 43.328' W	Value at Risk	Mne	39° 52.820' N	111° 46.583' W
Drop Point	DP-35	39° 48.442' N	111° 49.543' W	Value at Risk	Mne	39° 52.866' N	111° 46.823' W
Drop Point	DP-40	39° 50.965' N	111° 49.321' W	Value at Risk	Mne	39° 53.196' N	111° 46.763' W
Drop Point	DP-46	39° 53.912' N	111° 48.766' W	Value at Risk	Mne	39° 53.335' N	111° 46.820' W
Hazard		39° 52.190' N	111° 49.098' W	Value at Risk	Payson Lakes G.S.	39° 55.501' N	111° 37.985' W
Hazard	Impassible culvert	39° 54.887' N	111° 44.837' W	Value at Risk	Yurt	39° 54.755' N	111° 46.318' W
Helibase		39° 57.354' N	111° 47.618' W	Water Source		39° 57.174' N	111° 49.395' W
Helispot	H-1	39° 56.233' N	111° 46.982' W	Water Source		39° 52.820' N	111° 47.964' W



- | | | |
|-----------------------|-------------------------|----------------------------------|
| D Closure | Water Source | Proposed Dozer Line |
| A Dip Site | n Value at Risk | Fire Break Planned or Incomplete |
| ! Drop Point |) Division Break | Temporary Flight Restriction |
| G Hazard | Uncontrolled Fire Edge | Wilderness |
| Helibase | Contained Line | Forest Boundary |
| Helispot | Completed Dozer Line | Mcrowave Towers |
| Incident Base | Completed Hand Line | Antenna Structure |
| Incident Command Post | Road as Completed Line | Transmission Lines |
| Repeater | Access or Improved Road | |
| Road Repair | Line Break Completed | |
| Safety Zone | Proposed Burnout | |



PILOT MAP
 William
 UT-NWS-000891
 9/22 Day

5,832 acres at 9/20/20 @ 0015

ajb
 9/21/2020 2139
 Acres from IR and GPS
 North American 1983 Datum.
 Lat/Long Grid