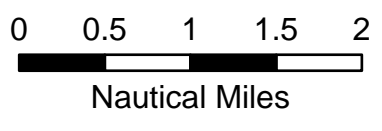
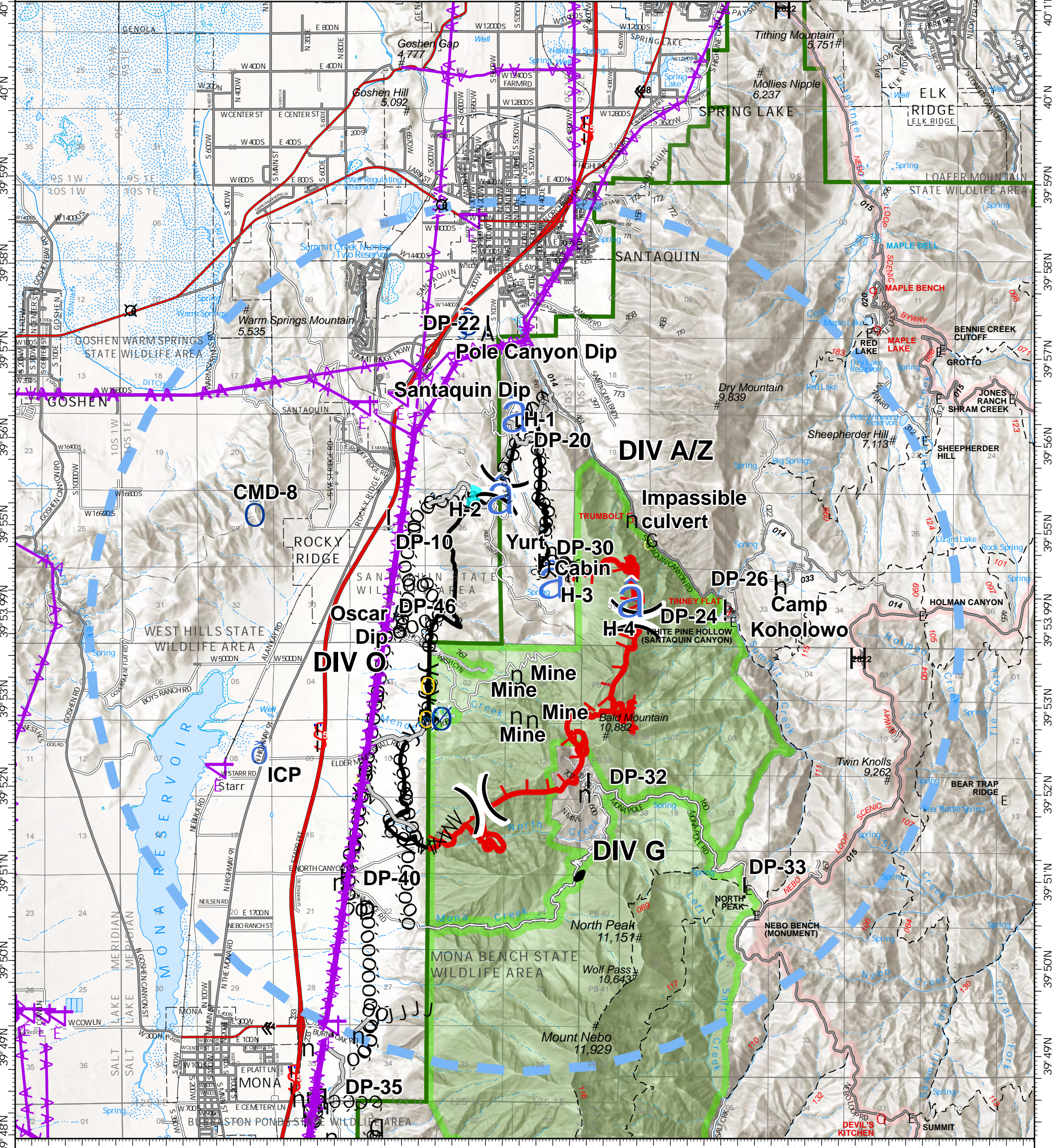


FeatureCategory	Label	LatWGS84_DDM	LongWGS84_DDM	FeatureCategory	Label	LatWGS84_DDM	LongWGS84_DDM
Closure		39° 50.617' N	111° 49.040' W	Drop Point	DP-40	39° 50.965' N	111° 49.321' W
Dip Site	Oscar Dip	39° 54.030' N	111° 48.594' W	Drop Point	DP-46	39° 53.912' N	111° 48.766' W
Dip Site	Pole Canyon Dip	39° 57.262' N	111° 47.304' W	Hazard		39° 52.190' N	111° 49.098' W
Dip Site	Santaquin Dip	39° 56.368' N	111° 46.673' W	Hazard	Impassible culvert	39° 54.887' N	111° 44.837' W
Division Break	A/Z - G Break	39° 53.982' N	111° 45.076' W	Helibase		39° 57.354' N	111° 47.618' W
Division Break	G - O Break	39° 51.838' N	111° 47.362' W	Helispot	H-1	39° 56.233' N	111° 46.982' W
Division Break	O - A/Z Break	39° 56.212' N	111° 46.743' W	Helispot	H-2	39° 55.292' N	111° 47.186' W
Drop Point	DP-10	39° 55.093' N	111° 48.675' W	Helispot	H-3	39° 54.327' N	111° 46.413' W
Drop Point	DP-20	39° 56.228' N	111° 46.780' W	Helispot	H-4	39° 54.120' N	111° 45.231' W
Drop Point	DP-22	39° 57.328' N	111° 47.221' W	Incident Command Post ICP		39° 52.413' N	111° 50.639' W
Drop Point	DP-24	39° 54.092' N	111° 43.648' W	Repeater	CMD-8	39° 55.138' N	111° 50.773' W
Drop Point	DP-26	39° 54.380' N	111° 42.896' W	Repeater	CMD-9	40° 05.318' N	111° 49.327' W
Drop Point	DP-30	39° 54.600' N	111° 46.422' W	Road Repair		39° 51.907' N	111° 49.153' W
Drop Point	DP-32	39° 52.091' N	111° 45.665' W	Safety Zone		39° 52.800' N	111° 48.183' W
Drop Point	DP-33	39° 50.907' N	111° 43.328' W	Safety Zone		39° 53.181' N	111° 48.165' W
Drop Point	DP-35	39° 48.442' N	111° 49.543' W	Water Source		39° 52.820' N	111° 47.964' W



- D Closure
- A Dip Site
- ! Drop Point
- G Hazard
- h Helibase
- h Helispot
- o Incident Command Post
- o Repeater
- o Road Repair
- o Safety Zone
- o Water Source
- () Division Break
- o Uncontrolled Fire Edge
- o Contained Line
- o Completed Dozer Line
- o Completed Hand Line
- o Road as Completed Line
- o Access or Improved Road
- o Line Break Completed
- o Proposed Burnout
- D Proposed Dozer Line
- e Fire Break Planned or Incomplete
- o Temporary Flight Restriction
- o Wilderness
- o Forest Boundary
- o Microwave Towers
- o Antenna Structure
- o Transmission Lines
- n Value at Risk



PILOT MAP
 William
 UT-NWS-000891
 9/24-9/29

5,832 acres at 9/20/20 @ 0015

ajb
 9/22/2020 1458
 Acres from IR and GPS
 North American 1983 Datum.
 Lat/Long Grid