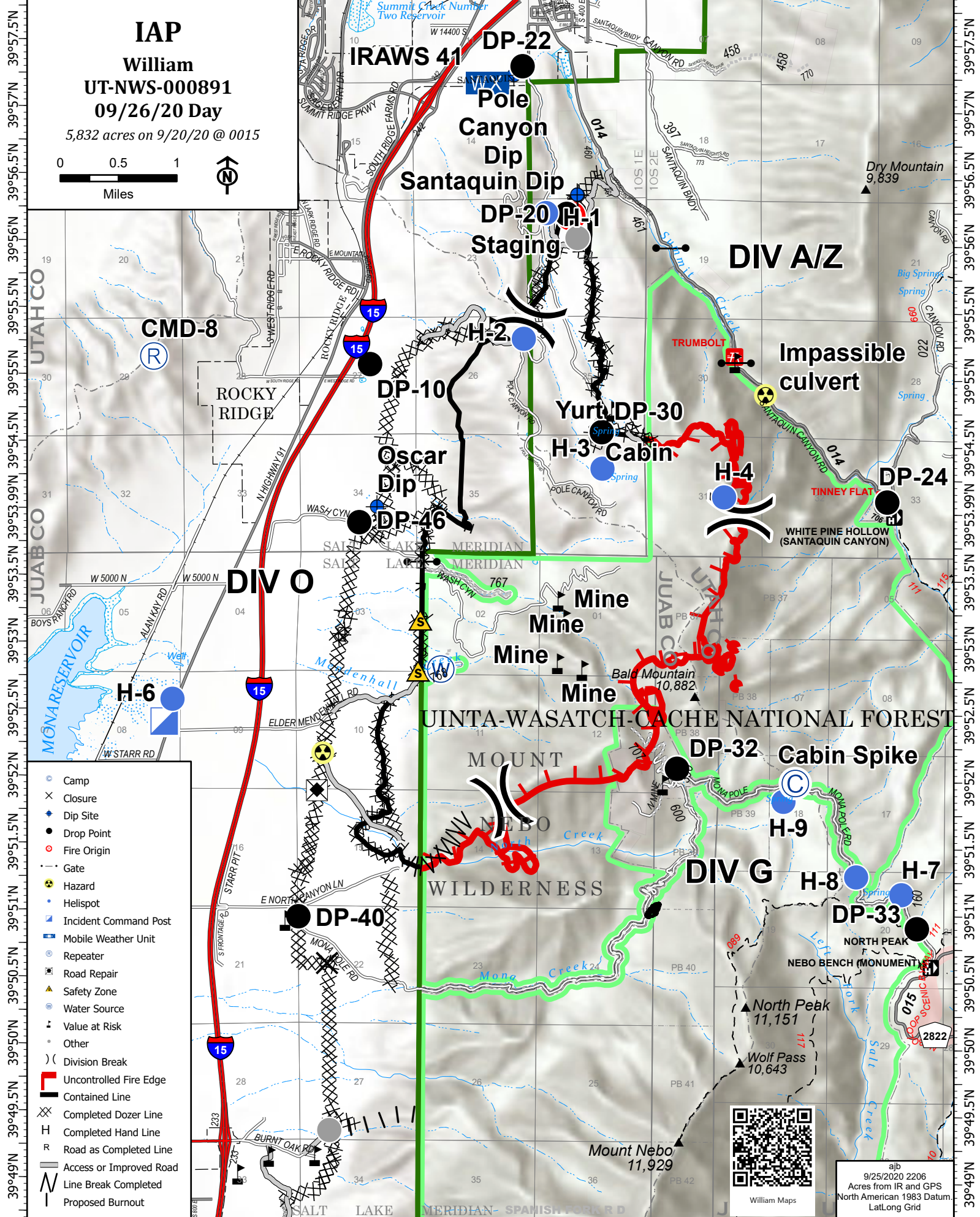
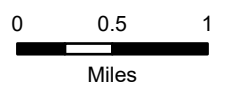


111°52'W 111°51.01'W 111°50'W 111°49'W 111°48'W 111°47'W 111°46'W 111°45'W 111°44'W



**IAP**  
**William**  
**UT-NWS-000891**  
**09/26/20 Day**  
5,832 acres on 9/20/20 @ 0015



39°57.5'N 39°57'N 39°56.5'N 39°56'N 39°55.5'N 39°55'N 39°54.5'N 39°54'N 39°53.5'N 39°53'N 39°52.5'N 39°52'N 39°51.5'N 39°51'N 39°50.5'N 39°50'N 39°49.5'N 39°49'N

39°57.5'N 39°57'N 39°56.5'N 39°56'N 39°55.5'N 39°55'N 39°54.5'N 39°54'N 39°53.5'N 39°53'N 39°52.5'N 39°52'N 39°51.5'N 39°51'N 39°50.5'N 39°50'N 39°49.5'N 39°49'N

- Camp
- ✕ Closure
- ◆ Dip Site
- Drop Point
- Fire Origin
- Gate
- ☠ Hazard
- Helispot
- Incident Command Post
- Mobile Weather Unit
- Repeater
- ✂ Road Repair
- ▲ Safety Zone
- Water Source
- Value at Risk
- Other
- ( Division Break
- Uncontrolled Fire Edge
- Contained Line
- ✂ Completed Dozer Line
- H Completed Hand Line
- R Road as Completed Line
- Access or Improved Road
- Line Break Completed
- Proposed Burnout



William Maps  
9/25/2020 2206  
Acres from IR and GPS  
North American 1983 Datum  
LatLong Grid