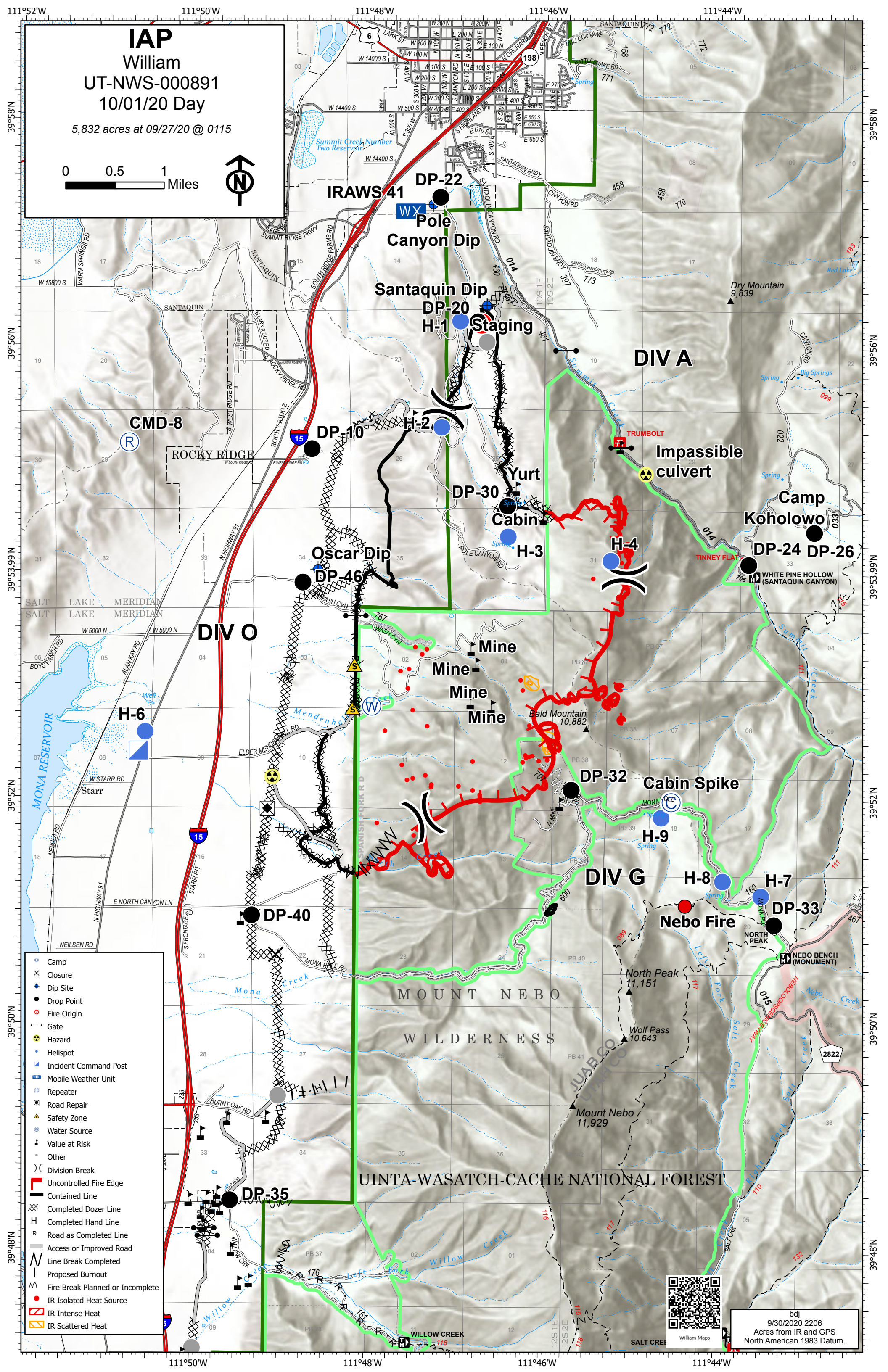


IAP

William
UT-NWS-000891
10/01/20 Day

5,832 acres at 09/27/20 @ 0115

0 0.5 1 Miles



CMD-8

DIV O

DIV A

DIV G

MOUNT NEBO
WILDERNESS

UINTA-WASATCH-CACHE NATIONAL FOREST

- Camp
- ✕ Closure
- ◆ Dip Site
- Drop Point
- Fire Origin
- - - Gate
- ☠ Hazard
- Helispot
- Incident Command Post
- Mobile Weather Unit
- Ⓜ Repeater
- ⚡ Road Repair
- ⚠ Safety Zone
- Water Source
- ⚠ Value at Risk
- Other
-) Division Break
- ▬ Uncontrolled Fire Edge
- ▬ Contained Line
- ▬ Completed Dozer Line
- H Completed Hand Line
- R Road as Completed Line
- ▬ Access or Improved Road
- ▬ Line Break Completed
- ▬ Proposed Burnout
- ▬ Fire Break Planned or Incomplete
- IR Isolated Heat Source
- ▬ IR Intense Heat
- ▬ IR Scattered Heat



bdj
9/30/2020 2206
Acres from IR and GPS
North American 1983 Datum.