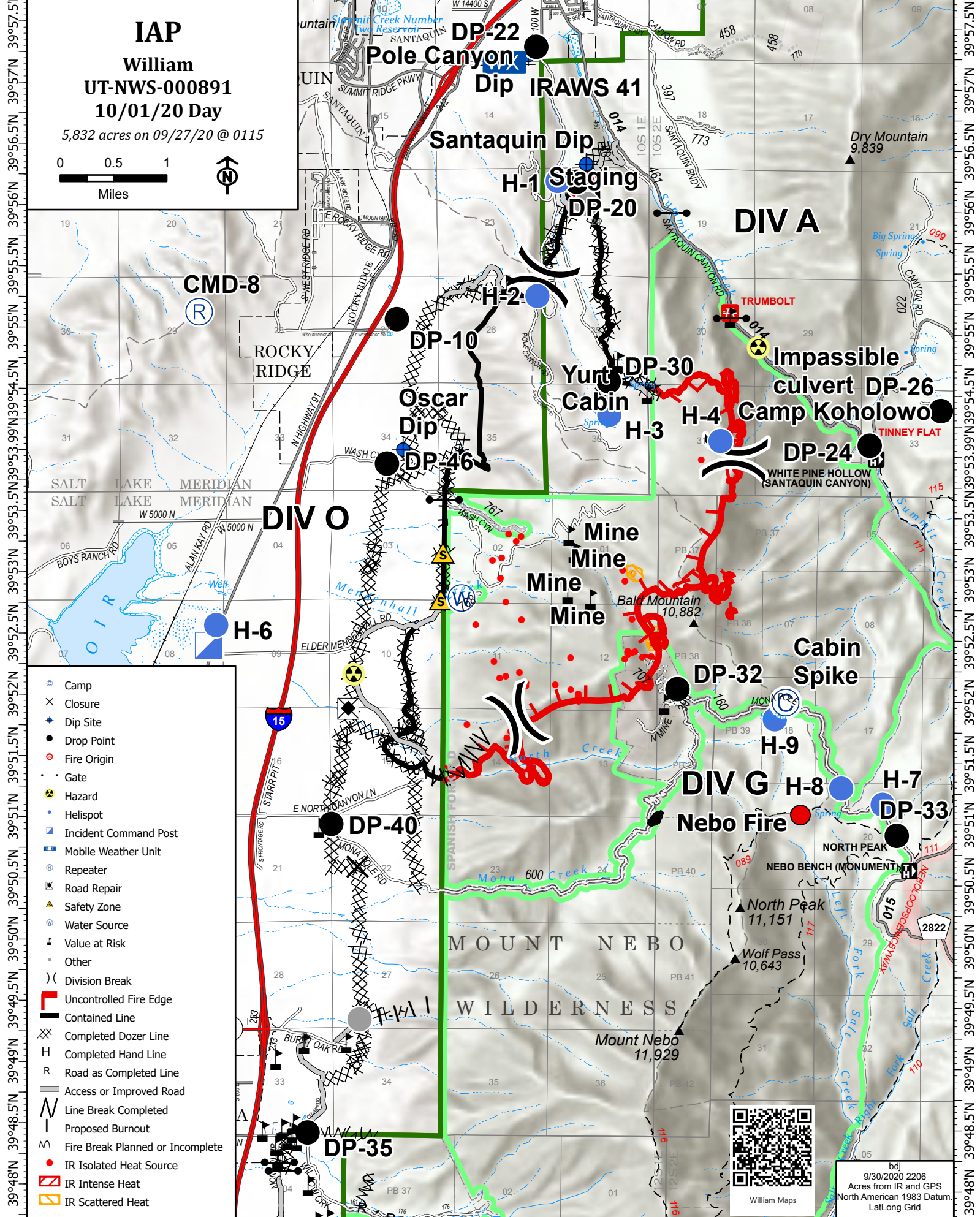
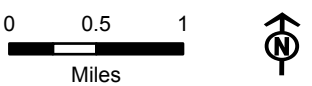


111°52.5'W 111°51.5'W 111°50.5'W 111°49.5'W 111°48.5'W 111°47.5'W 111°46.5'W 111°45.5'W 111°44.5'W 111°43.5'W



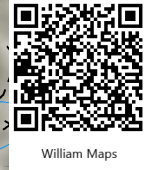
IAP
William
UT-NWS-000891
10/01/20 Day
5,832 acres on 09/27/20 @ 0115



111°52.5'W 111°51.5'W 111°50.5'W 111°49.5'W 111°48.5'W 111°47.5'W 111°46.5'W 111°45.5'W 111°44.5'W 111°43.5'W

39°57.5'N 39°56.5'N 39°55.5'N 39°54.5'N 39°53.5'N 39°52.5'N 39°51.5'N 39°50.5'N 39°49.5'N 39°48.5'N

39°57.5'N 39°56.5'N 39°55.5'N 39°54.5'N 39°53.5'N 39°52.5'N 39°51.5'N 39°50.5'N 39°49.5'N 39°48.5'N



bdj
9/30/2020 2206
Acres from IR and GPS
North American 1983 Datum
Lat/Long Grid

William Maps