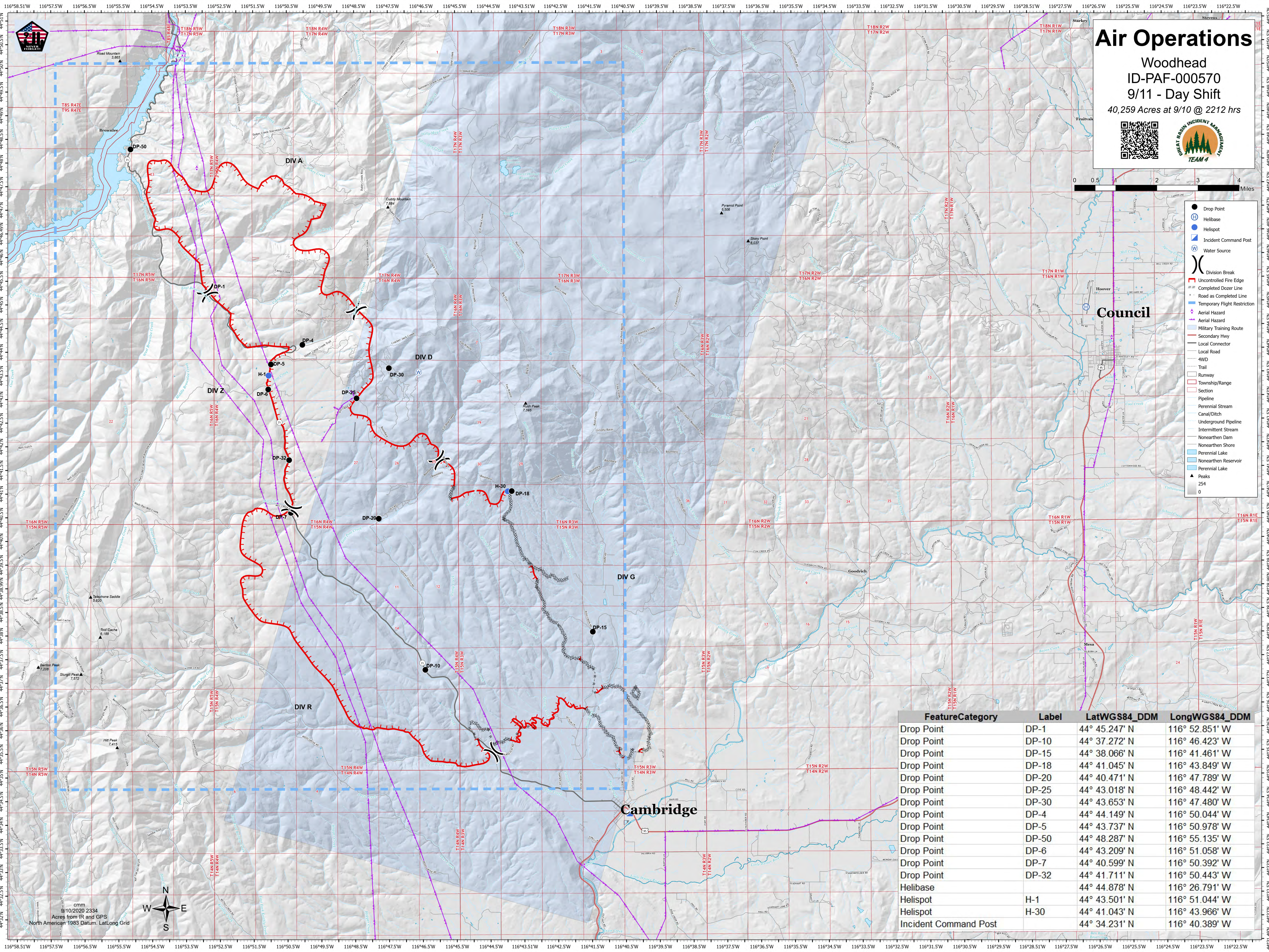
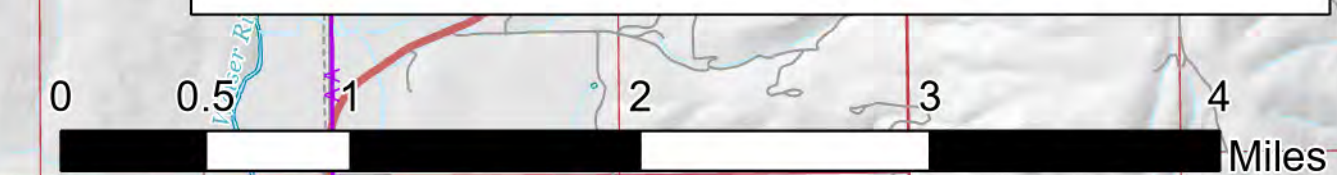


Air Operations

Woodhead
ID-PAF-000570
9/11 - Day Shift
40,259 Acres at 9/10 @ 2212 hrs



- Drop Point
- ⊕ Helibase
- Helispot
- ⊠ Incident Command Post
- ⊠ Water Source
- ⊠ Division Break
- ⊠ Uncontrolled Fire Edge
- ⊠ Completed Dozer Line
- ⊠ Road as Completed Line
- ⊠ Temporary Flight Restriction
- ⊠ Aerial Hazard
- ⊠ Military Training Route
- ⊠ Secondary Hwy
- ⊠ Local Connector
- ⊠ Local Road
- ⊠ 4WD
- ⊠ Trail
- ⊠ Runway
- ⊠ Section
- ⊠ Pipeline
- ⊠ Perennial Stream
- ⊠ Canal/Ditch
- ⊠ Underground Pipeline
- ⊠ Intermittent Stream
- ⊠ Nonearthen Dam
- ⊠ Nonearthen Shore
- ⊠ Perennial Lake
- ⊠ Nonearthen Reservoir
- ⊠ Perennial Lake
- ⊠ Peaks
- 254
- 0

Council

Cambridge

| FeatureCategory | Label | LatWGS84_DDM | LongWGS84_DDM |
|-----------------------|-------|---------------|----------------|
| Drop Point | DP-1 | 44° 45.247' N | 116° 52.851' W |
| Drop Point | DP-10 | 44° 37.272' N | 116° 46.423' W |
| Drop Point | DP-15 | 44° 38.066' N | 116° 41.461' W |
| Drop Point | DP-18 | 44° 41.045' N | 116° 43.849' W |
| Drop Point | DP-20 | 44° 40.471' N | 116° 47.789' W |
| Drop Point | DP-25 | 44° 43.018' N | 116° 48.442' W |
| Drop Point | DP-30 | 44° 43.653' N | 116° 47.480' W |
| Drop Point | DP-4 | 44° 44.149' N | 116° 50.044' W |
| Drop Point | DP-5 | 44° 43.737' N | 116° 50.978' W |
| Drop Point | DP-50 | 44° 48.287' N | 116° 55.135' W |
| Drop Point | DP-6 | 44° 43.209' N | 116° 51.058' W |
| Drop Point | DP-7 | 44° 40.599' N | 116° 50.392' W |
| Drop Point | DP-32 | 44° 41.711' N | 116° 50.443' W |
| Helibase | | 44° 44.878' N | 116° 26.791' W |
| Helispot | H-1 | 44° 43.501' N | 116° 51.044' W |
| Helispot | H-30 | 44° 41.043' N | 116° 43.966' W |
| Incident Command Post | | 44° 34.231' N | 116° 40.389' W |

cm
9/10/2020 2334
Acres from IR and GPS
North American 1983 Datum, Lat/Long Grid