



Operations

Woodhead

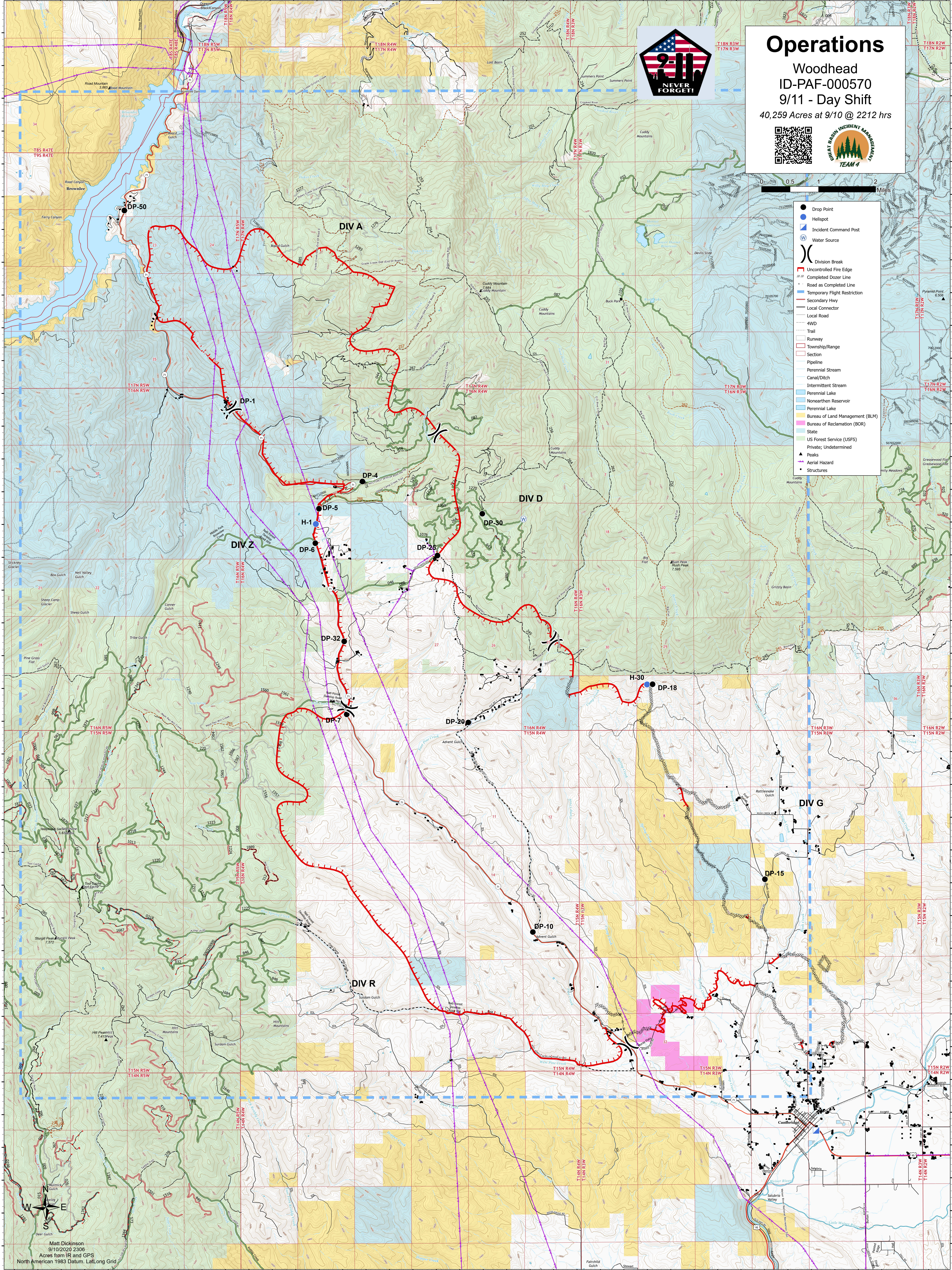
ID-PAF-000570

9/11 - Day Shift

40,259 Acres at 9/10 @ 2212 hrs



- Drop Point
- Helispot
- Incident Command Post
- W Water Source
- X Division Break
- Uncontrolled Fire Edge
- Completed Dozer Line
- Road as Completed Line
- Temporary Flight Restriction
- Secondary Hwy
- Local Connector
- Local Road
- 4WD
- Trail
- Runway
- Township/Range
- Section
- Pipeline
- Perennial Stream
- Canal/Ditch
- Intermittent Stream
- Perennial Lake
- Nonperennial Reservoir
- Perennial Lake
- Bureau of Land Management (BLM)
- Bureau of Reclamation (BOR)
- State
- US Forest Service (USFS)
- Private; Undetermined
- ▲ Peaks
- ▲ Aerial Hazard
- Structures



Matt Dickinson
9/10/2020 2306
Acres from IR and GPS
North American 1983 Datum, LatLong Grid