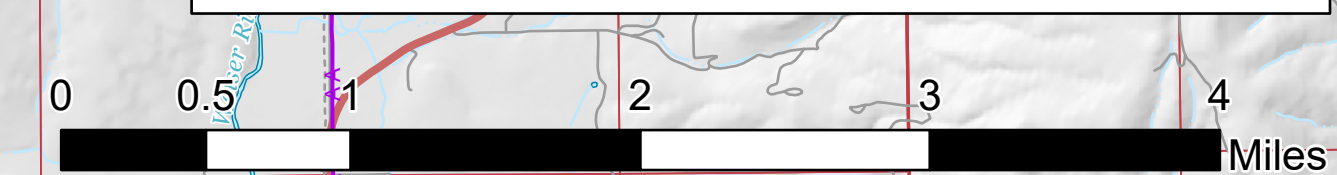
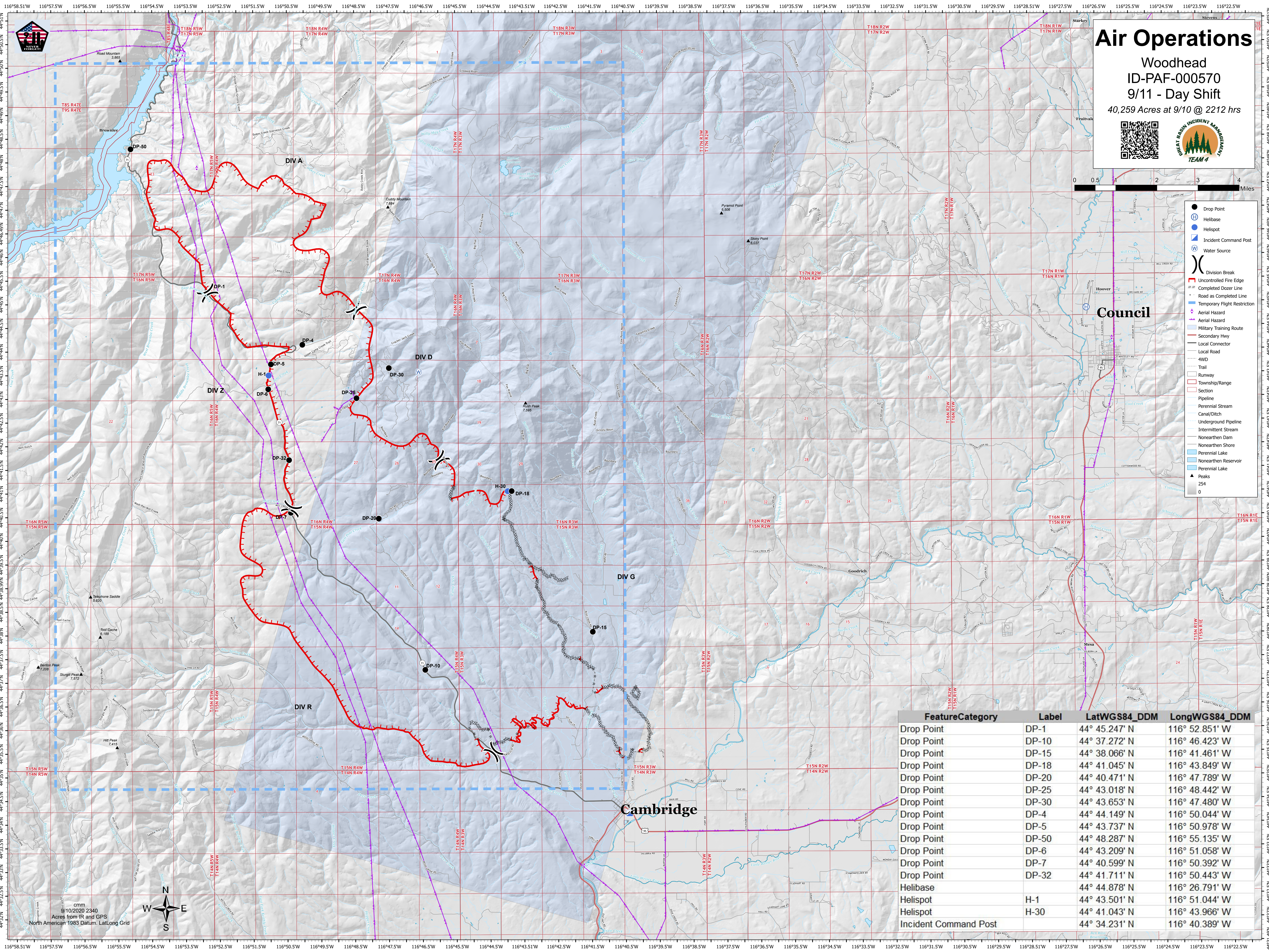


Air Operations

Woodhead
ID-PAF-000570
9/11 - Day Shift
40,259 Acres at 9/10 @ 2212 hrs



- Drop Point
- ⊕ Helibase
- Helispot
- ⊕ Incident Command Post
- ⊕ Water Source
- ⊕ Division Break
- ⊕ Uncontrolled Fire Edge
- ⊕ Completed Dozer Line
- ⊕ Road as Completed Line
- ⊕ Temporary Flight Restriction
- ⊕ Aerial Hazard
- ⊕ Military Training Route
- ⊕ Secondary Hwy
- ⊕ Local Connector
- ⊕ Local Road
- ⊕ 4WD
- ⊕ Trail
- ⊕ Runway
- ⊕ Section
- ⊕ Pipeline
- ⊕ Perennial Stream
- ⊕ Canal/Ditch
- ⊕ Underground Pipeline
- ⊕ Intermittent Stream
- ⊕ Nonearthen Dam
- ⊕ Nonearthen Shore
- ⊕ Perennial Lake
- ⊕ Nonearthen Reservoir
- ⊕ Perennial Lake
- ▲ Peaks
- 254
- 0



FeatureCategory	Label	LatWGS84_DDM	LongWGS84_DDM
Drop Point	DP-1	44° 45.247' N	116° 52.851' W
Drop Point	DP-10	44° 37.272' N	116° 46.423' W
Drop Point	DP-15	44° 38.066' N	116° 41.461' W
Drop Point	DP-18	44° 41.045' N	116° 43.849' W
Drop Point	DP-20	44° 40.471' N	116° 47.789' W
Drop Point	DP-25	44° 43.018' N	116° 48.442' W
Drop Point	DP-30	44° 43.653' N	116° 47.480' W
Drop Point	DP-4	44° 44.149' N	116° 50.044' W
Drop Point	DP-5	44° 43.737' N	116° 50.978' W
Drop Point	DP-50	44° 48.287' N	116° 55.135' W
Drop Point	DP-6	44° 43.209' N	116° 51.058' W
Drop Point	DP-7	44° 40.599' N	116° 50.392' W
Drop Point	DP-32	44° 41.711' N	116° 50.443' W
Helibase		44° 44.878' N	116° 26.791' W
Helispot	H-1	44° 43.501' N	116° 51.044' W
Helispot	H-30	44° 41.043' N	116° 43.966' W
Incident Command Post		44° 34.231' N	116° 40.389' W

cmm
9/10/2020 2340
Acres from IR and GPS
North American 1983 Datum, Lat/Long Grid