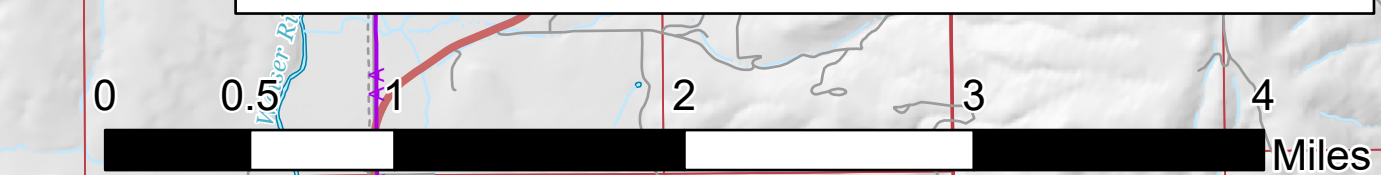


Air Ops

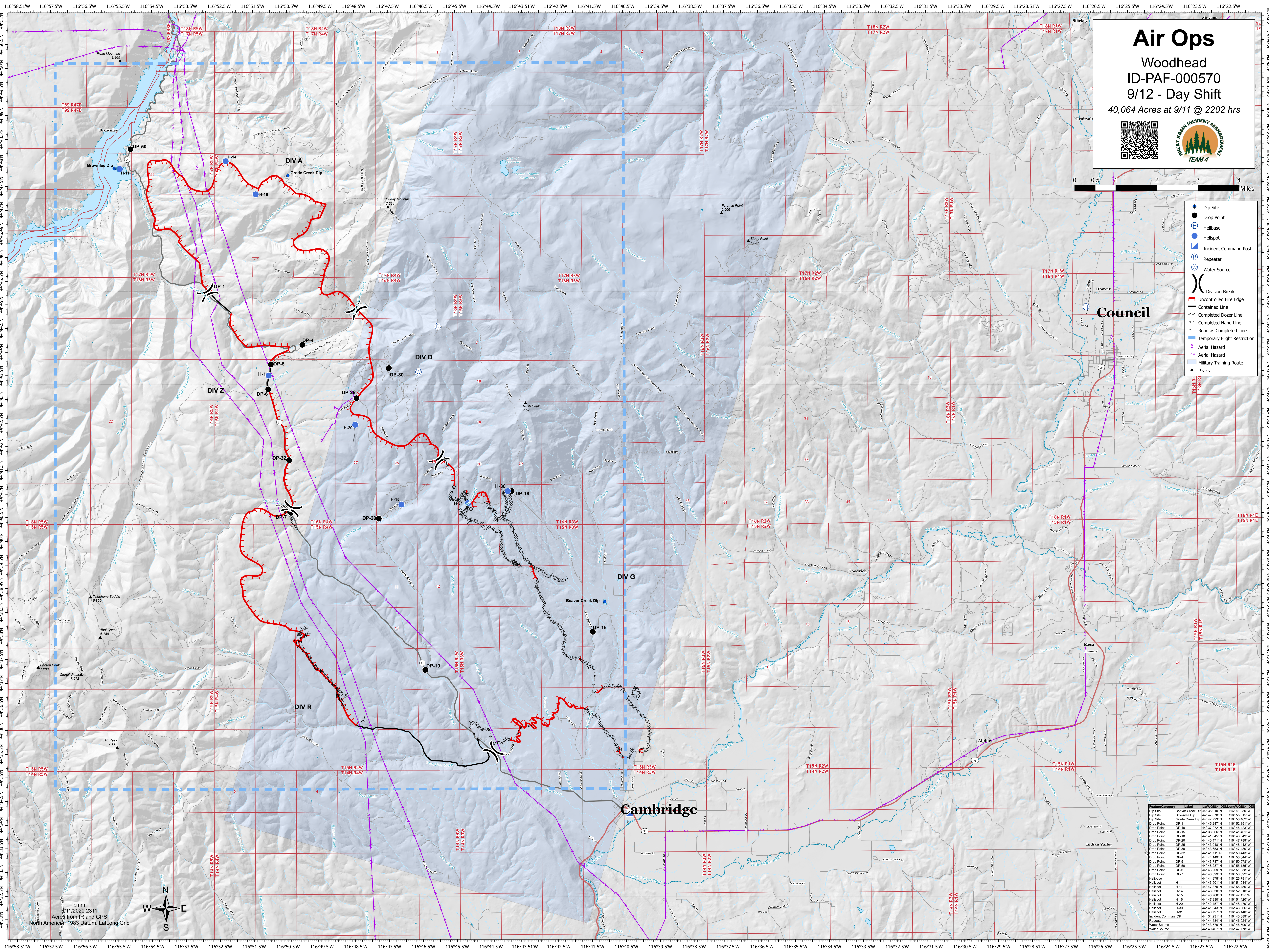
Woodhead
ID-PAF-000570
9/12 - Day Shift
40,064 Acres at 9/11 @ 2202 hrs



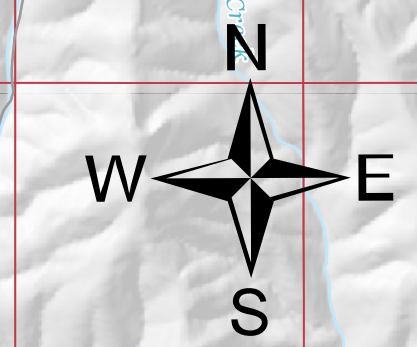
- Dip Site
- Drop Point
- Helibase
- Helispot
- Incident Command Post
- Repeater
- Water Source
- Division Break
- Uncontrolled Fire Edge
- Contained Line
- Completed Dozer Line
- Completed Hand Line
- Road as Completed Line
- Temporary Flight Restriction
- Aerial Hazard
- Military Training Route
- Peaks

Council

Cambridge



cmm
9/11/2020 2311
Acres from IR and GPS
North American 1983 Datum, Lat/Long Grid



Feature/Category	Label	Lat	Long	IR	GPS	Area
Dip Site	Beaver Creek Dip	44° 28.910' N	116° 41.288' W			
Dip Site	Brownlee Dip	44° 47.878' N	116° 55.615' W			
Dip Site	Grade Creek Dip	44° 37.728' N	116° 50.462' W			
Drop Point	DP-1	44° 45.247' N	116° 52.851' W			
Drop Point	DP-10	44° 32.278' N	116° 50.423' W			
Drop Point	DP-15	44° 38.006' N	116° 41.461' W			
Drop Point	DP-18	44° 41.040' N	116° 43.849' W			
Drop Point	DP-20	44° 40.471' N	116° 47.789' W			
Drop Point	DP-25	44° 43.016' N	116° 48.442' W			
Drop Point	DP-30	44° 43.859' N	116° 47.488' W			
Drop Point	DP-32	44° 41.711' N	116° 50.443' W			
Drop Point	DP-4	44° 44.148' N	116° 50.044' W			
Drop Point	DP-5	44° 43.737' N	116° 50.978' W			
Drop Point	DP-6	44° 48.287' N	116° 55.135' W			
Drop Point	DP-7	44° 48.678' N	116° 50.392' W			
Drop Point	DP-8	44° 48.678' N	116° 50.793' W			
Drop Point	DP-9	44° 43.501' N	116° 51.044' W			
Helispot	H-1	44° 47.878' N	116° 55.455' W			
Helispot	H-11	44° 45.031' N	116° 51.044' W			
Helispot	H-14	44° 45.031' N	116° 52.310' W			
Helispot	H-15	44° 40.768' N	116° 47.117' W			
Helispot	H-16	44° 47.333' N	116° 51.420' W			
Helispot	H-20	44° 42.457' N	116° 48.474' W			
Helispot	H-30	44° 41.040' N	116° 43.849' W			
Helispot	H-31	44° 40.797' N	116° 45.140' W			
Incident Command Post	ICP	44° 34.231' N	116° 40.389' W			
Repeater	R	44° 43.570' N	116° 40.599' W			
Water Source	W	44° 40.462' N	116° 47.778' W			