

Air Ops

Woodhead
ID-PAF-000570
9/13 - Day Shift

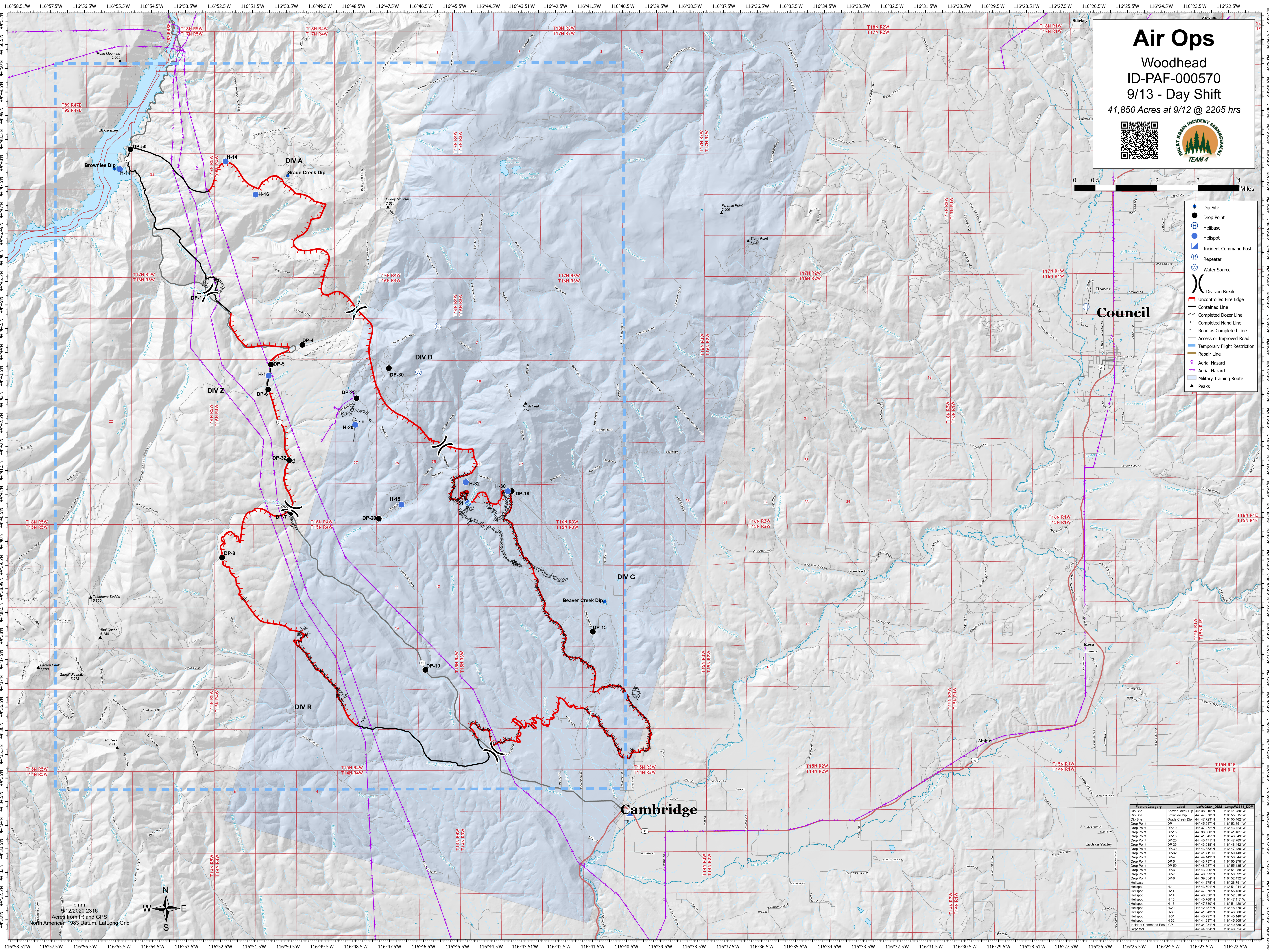
41,850 Acres at 9/12 @ 2205 hrs



- Dip Site
- Drop Point
- Helibase
- Helispot
- Incident Command Post
- Repeater
- Water Source
- Division Break
- Uncontrolled Fire Edge
- Contained Line
- Completed Dozer Line
- Completed Hand Line
- Road as Completed Line
- Access or Improved Road
- Temporary Flight Restriction
- Repair Line
- Aerial Hazard
- Military Training Route
- Peaks

Council

Cambridge



cmm
9/12/2020 23:16
Acres from IR and GPS
North American 1983 Datum, Lat/Long Grid



FeatureCategory	Label	Long/East, DOM	Long/West, DOM
Dip Site	Beaver Creek Dip	44° 38.910' N	116° 51.250' W
Dip Site	Brownlee Dip	44° 47.870' N	116° 56.610' W
Dip Site	Grade Creek Dip	44° 57.270' N	116° 50.800' W
Drop Point	DP-1	44° 45.247' N	116° 02.851' W
Drop Point	DP-10	44° 37.270' N	116° 46.820' W
Drop Point	DP-15	44° 38.066' N	116° 41.461' W
Drop Point	DP-18	44° 41.640' N	116° 43.840' W
Drop Point	DP-20	44° 45.471' N	116° 47.700' W
Drop Point	DP-25	44° 43.018' N	116° 48.442' W
Drop Point	DP-30	44° 43.680' N	116° 47.800' W
Drop Point	DP-32	44° 41.711' N	116° 50.443' W
Drop Point	DP-4	44° 44.146' N	116° 50.947' W
Drop Point	DP-5	44° 43.737' N	116° 09.976' W
Drop Point	DP-6	44° 48.287' N	116° 55.150' W
Drop Point	DP-7	44° 40.598' N	116° 00.302' W
Drop Point	DP-8	44° 39.868' N	116° 52.402' W
Drop Point	DP-9	44° 44.878' N	116° 28.791' W
Helibase	H-11	44° 45.550' N	116° 51.044' W
Helibase	H-14	44° 47.870' N	116° 56.450' W
Helibase	H-15	44° 46.820' N	116° 52.310' W
Helibase	H-16	44° 46.788' N	116° 47.317' W
Helibase	H-20	44° 47.330' N	116° 51.420' W
Helibase	H-30	44° 40.787' N	116° 45.347' W
Helibase	H-32	44° 41.237' N	116° 45.200' W
Incident Command Post	ICP	44° 34.231' N	116° 40.380' W
Repeater		44° 44.594' N	116° 40.380' W