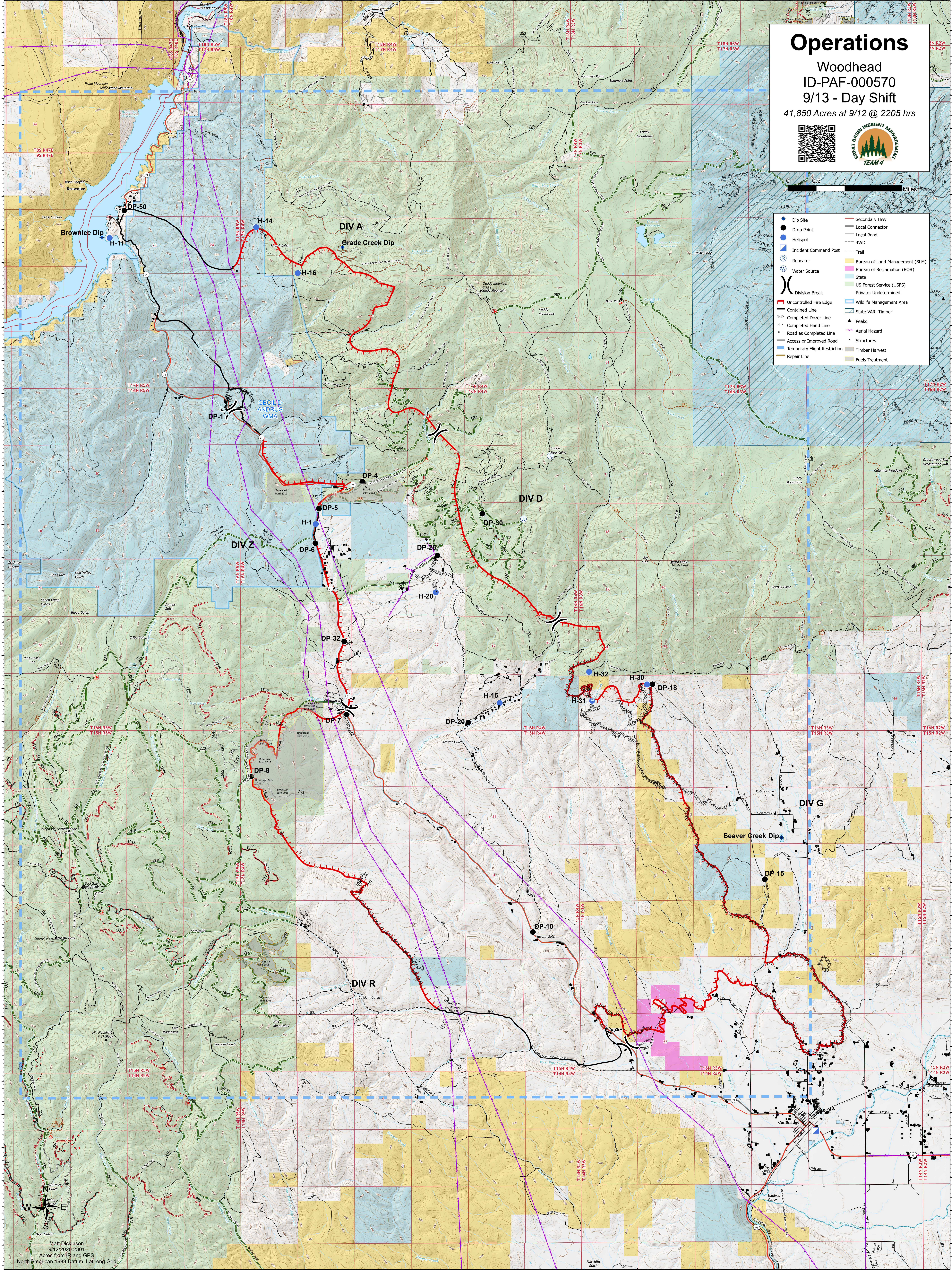


Operations

Woodhead
ID-PAF-000570
9/13 - Day Shift
41,850 Acres at 9/12 @ 2205 hrs



- Dip Site
- Drop Point
- Hellspot
- Incident Command Post
- Repeater
- Water Source
- Division Break
- Uncontrolled Fire Edge
- Contained Line
- Completed Dozer Line
- Completed Hand Line
- Road as Completed Line
- Access or Improved Road
- Temporary Flight Restriction
- Repair Line
- Secondary Hwy
- Local Connector
- Local Road
- 4WD
- Trail
- Bureau of Land Management (BLM)
- Bureau of Reclamation (BOR)
- State
- US Forest Service (USFS)
- Private, Undetermined
- Wildlife Management Area
- State VAR - Timber
- Peaks
- Aerial Hazard
- Structures
- Timber Harvest
- Fuels Treatment



Matt Dickinson
9/12/2020 2301
Acres from IR and GPS
North American 1983 Datum, LatLong Grid