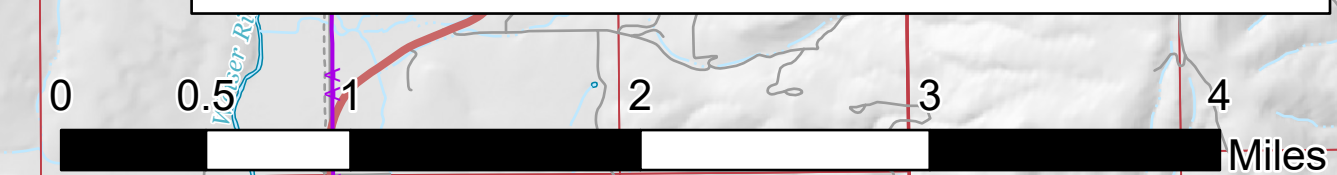


Air Ops

Woodhead
ID-PAF-000570
9/13 - Day Shift

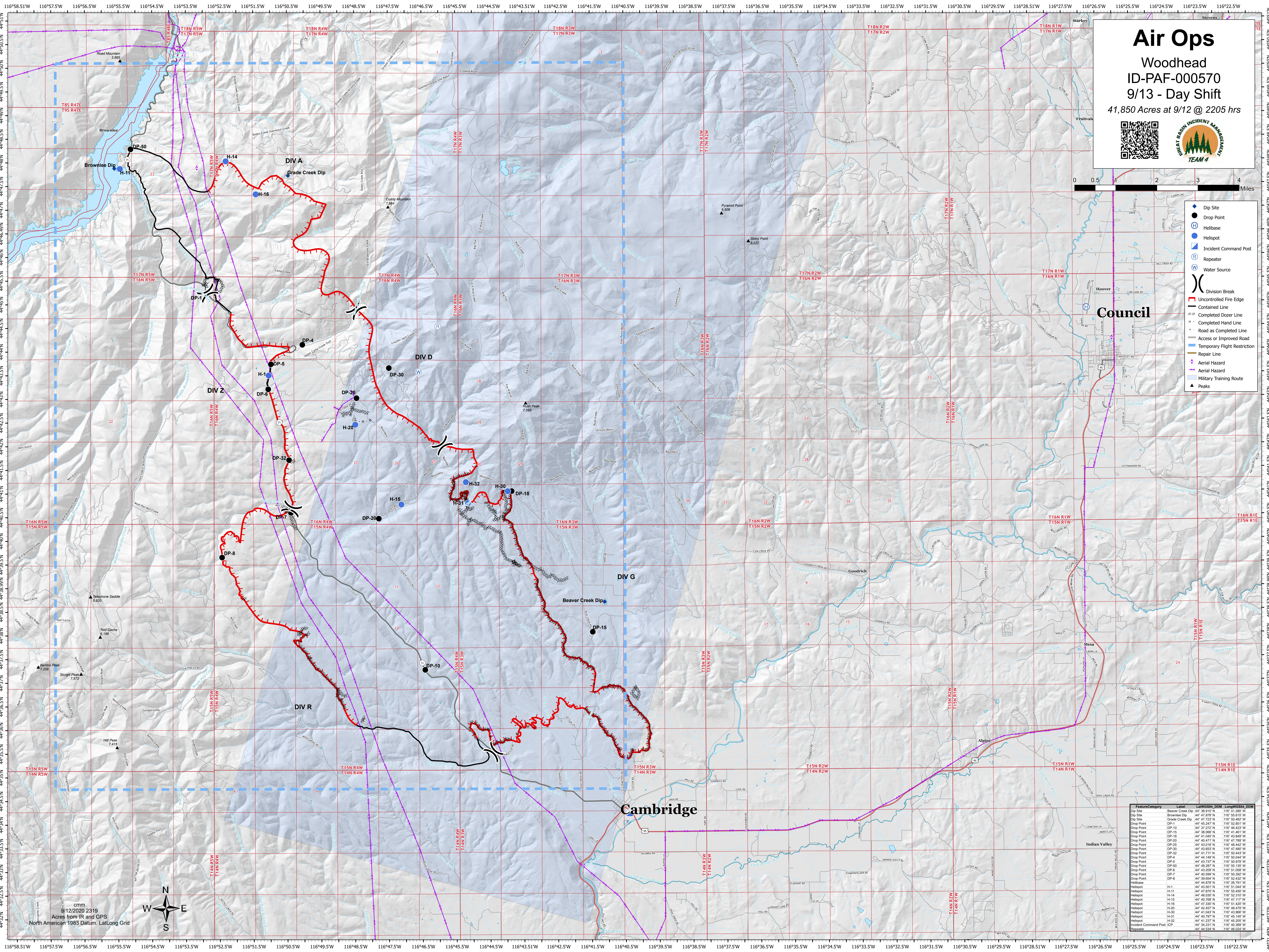
41,850 Acres at 9/12 @ 2205 hrs



- Dip Site
- Drop Point
- Hellbase
- Hellspot
- Incident Command Post
- Repeater
- Water Source
- Division Break
- Uncontrolled Fire Edge
- Contained Line
- Completed Dozer Line
- Completed Hand Line
- Road as Completed Line
- Access or Improved Road
- Temporary Flight Restriction
- Repair Line
- Aerial Hazard
- Military Training Route
- Peaks

Council

Cambridge



cmm
9/12/2020 2319
Acres from IR and GPS
North American 1983 Datum, Lat/Long Grid

Feature/Category	Label	Lat/Long (NAD 83)	DOM	Long/West (NAD 83)
Dip Site	Beaver Creek Dip	44° 38.810' N	116° 41.200' W	
Dip Site	Brownlee Dip	44° 47.870' N	116° 58.610' W	
Dip Site	Grade Creek Dip	44° 57.720' N	116° 50.400' W	
Drop Point	DP-1	44° 45.247' N	116° 02.851' W	
Drop Point	DP-10	44° 37.270' N	116° 48.020' W	
Drop Point	DP-15	44° 38.000' N	116° 41.461' W	
Drop Point	DP-18	44° 41.040' N	116° 43.840' W	
Drop Point	DP-20	44° 40.471' N	116° 47.700' W	
Drop Point	DP-25	44° 43.010' N	116° 48.442' W	
Drop Point	DP-30	44° 43.600' N	116° 47.800' W	
Drop Point	DP-32	44° 41.711' N	116° 50.443' W	
Drop Point	DP-4	44° 44.140' N	116° 50.840' W	
Drop Point	DP-5	44° 43.737' N	116° 50.970' W	
Drop Point	DP-6	44° 48.287' N	116° 55.150' W	
Drop Point	DP-7	44° 40.590' N	116° 50.300' W	
Drop Point	DP-8	44° 39.800' N	116° 52.400' W	
Hellbase	H-1	44° 44.870' N	116° 28.701' W	
Hellbase	H-11	44° 47.870' N	116° 58.450' W	
Hellbase	H-14	44° 48.030' N	116° 52.310' W	
Hellbase	H-15	44° 40.780' N	116° 47.110' W	
Hellbase	H-16	44° 47.330' N	116° 51.420' W	
Hellbase	H-20	44° 43.270' N	116° 47.480' W	
Hellbase	H-30	44° 41.040' N	116° 43.960' W	
Hellbase	H-31	44° 40.700' N	116° 45.140' W	
Hellbase	H-32	44° 41.207' N	116° 45.200' W	
Incident Command Post	ICP	44° 34.231' N	116° 40.300' W	
Repeater		44° 44.540' N	116° 40.000' W	