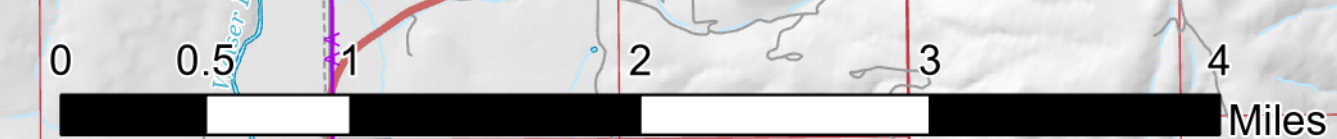
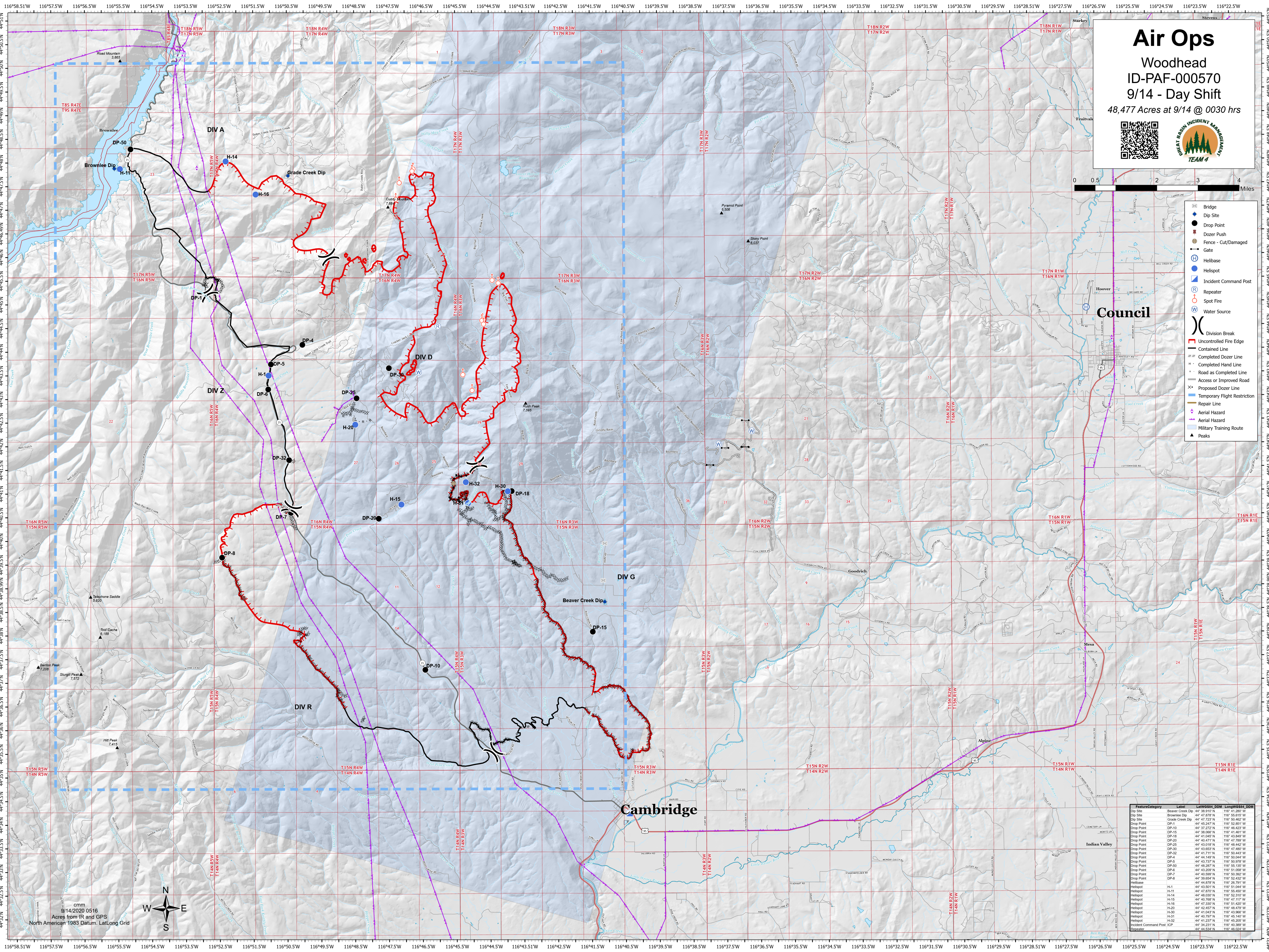


Air Ops

Woodhead
ID-PAF-000570
9/14 - Day Shift
48,477 Acres at 9/14 @ 0030 hrs



- Bridge
- Dip Site
- Dozer Push
- Fence - Cut/Damaged
- Gate
- Hellbase
- Hellspot
- Incident Command Post
- Repeater
- Spot Fire
- Water Source
- Division Break
- Uncontrolled Fire Edge
- Controlled Line
- Completed Dozer Line
- Completed Hand Line
- Road as Completed Line
- Access or Improved Road
- Proposed Dozer Line
- Temporary Flight Restriction
- Repair Line
- Aerial Hazard
- Military Training Route
- Peaks



cmm
9/14/2020 0516
Acres from IR and GPS
North American 1983 Datum, Lat/Long Grid



FeatureCategory	Label	LongWGS84	DOM	LongWGS84	DOM
Dip Site	Beaver Creek Dip	44° 38.910' N	116° 41.260' W		
Dip Site	Brownlee Dip	44° 47.870' N	116° 56.610' W		
Dip Site	Grade Creek Dip	44° 47.720' N	116° 50.860' W		
Drop Point	DP-1	44° 45.247' N	116° 02.851' W		
Drop Point	DP-10	44° 37.270' N	116° 46.820' W		
Drop Point	DP-15	44° 38.066' N	116° 41.461' W		
Drop Point	DP-18	44° 41.640' N	116° 43.840' W		
Drop Point	DP-20	44° 45.471' N	116° 47.700' W		
Drop Point	DP-25	44° 43.010' N	116° 48.442' W		
Drop Point	DP-30	44° 43.680' N	116° 47.400' W		
Drop Point	DP-32	44° 41.711' N	116° 50.443' W		
Drop Point	DP-4	44° 44.140' N	116° 50.940' W		
Drop Point	DP-5	44° 43.737' N	116° 50.970' W		
Drop Point	DP-6	44° 48.287' N	116° 55.150' W		
Drop Point	DP-7	44° 40.590' N	116° 50.302' W		
Drop Point	DP-8	44° 38.860' N	116° 52.402' W		
Hellbase	H-1	44° 44.870' N	116° 28.701' W		
Hellspot	H-11	44° 47.870' N	116° 56.450' W		
Hellspot	H-14	44° 48.030' N	116° 52.310' W		
Hellspot	H-15	44° 40.780' N	116° 47.310' W		
Hellspot	H-16	44° 47.330' N	116° 51.420' W		
Hellspot	H-20	44° 45.470' N	116° 47.700' W		
Hellspot	H-30	44° 41.043' N	116° 43.860' W		
Hellspot	H-31	44° 40.780' N	116° 45.300' W		
Hellspot	H-32	44° 41.237' N	116° 45.200' W		
Incident Command Post	ICP	44° 34.231' N	116° 40.300' W		
Repeater		44° 44.530' N	116° 40.300' W		