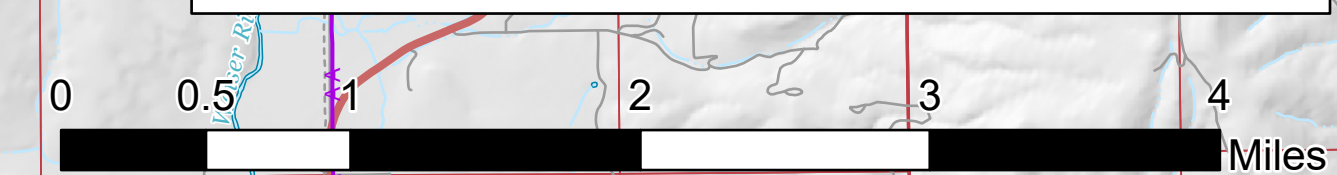


# Air Ops

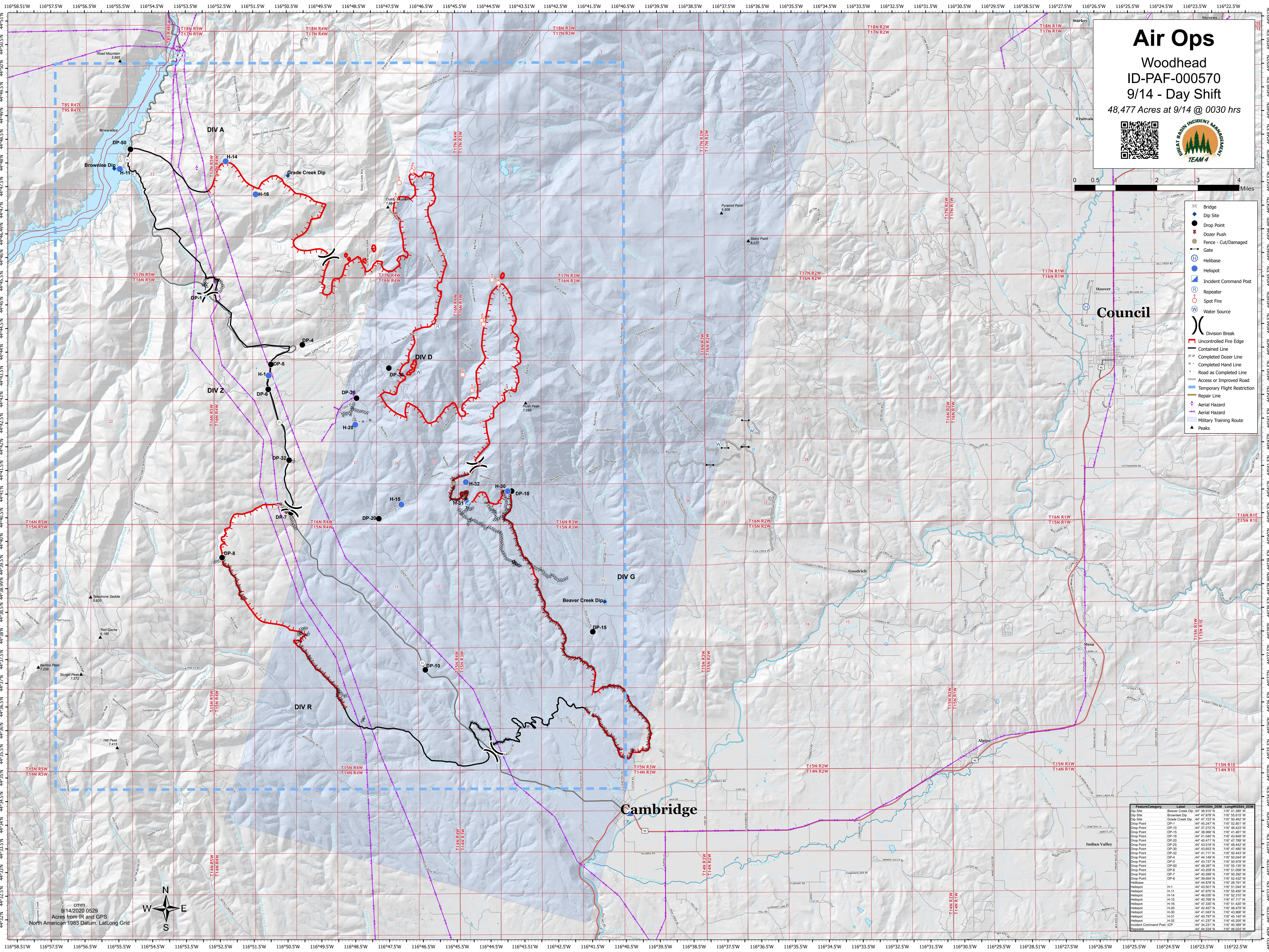
Woodhead  
ID-PAF-000570

9/14 - Day Shift

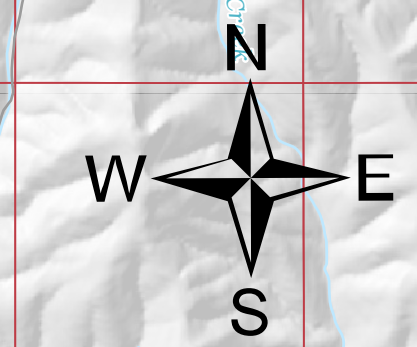
48,477 Acres at 9/14 @ 0030 hrs



- Bridge
- Dip Site
- Dozer Push
- Fence - Cut/Damaged
- Gate
- Helibase
- Helispot
- Incident Command Post
- Repeater
- Spot Fire
- Water Source
- Division Break
- Uncontrolled Fire Edge
- Controlled Line
- Completed Dozer Line
- Completed Hand Line
- Road as Completed Line
- Access or Improved Road
- Temporary Flight Restriction
- Repair Line
- Aerial Hazard
- Military Training Route
- Peaks



cmm  
9/14/2020 0529  
Acres from IR and GPS  
North American 1983 Datum, Lat/Long Grid



Feature/Category	Label	Lat/Long (N, W)	DOM
Dip Site	Beaver Creek Dip	44° 38.810' N	116° 41.200' W
Dip Site	Brownlee Dip	44° 47.870' N	116° 58.610' W
Dip Site	Grade Creek Dip	44° 37.720' N	116° 50.400' W
Drop Point	DP-1	44° 45.247' N	116° 02.851' W
Drop Point	DP-4	44° 37.270' N	116° 48.020' W
Drop Point	DP-5	44° 38.006' N	116° 41.461' W
Drop Point	DP-7	44° 41.640' N	116° 43.840' W
Drop Point	DP-8	44° 40.471' N	116° 47.700' W
Drop Point	DP-10	44° 43.018' N	116° 48.442' W
Drop Point	DP-15	44° 43.600' N	116° 47.400' W
Drop Point	DP-20	44° 41.711' N	116° 50.443' W
Drop Point	DP-25	44° 44.140' N	116° 50.040' W
Drop Point	DP-32	44° 43.737' N	116° 50.970' W
Drop Point	DP-33	44° 48.287' N	116° 55.150' W
Drop Point	DP-6	44° 43.200' N	116° 51.000' W
Drop Point	DP-7	44° 40.500' N	116° 50.300' W
Drop Point	DP-8	44° 39.800' N	116° 52.400' W
Drop Point	DP-9	44° 44.870' N	116° 51.040' W
Helibase	H-11	44° 47.870' N	116° 58.450' W
Helibase	H-14	44° 48.000' N	116° 52.310' W
Helibase	H-15	44° 40.700' N	116° 47.110' W
Helibase	H-16	44° 47.300' N	116° 51.420' W
Helibase	H-20	44° 43.200' N	116° 48.470' W
Helibase	H-30	44° 41.040' N	116° 43.960' W
Helibase	H-31	44° 40.700' N	116° 45.140' W
Helibase	H-32	44° 41.200' N	116° 45.200' W
Incident Command Post	ICP	44° 34.231' N	116° 40.300' W
Repeater		44° 44.500' N	116° 40.300' W