

Air Ops

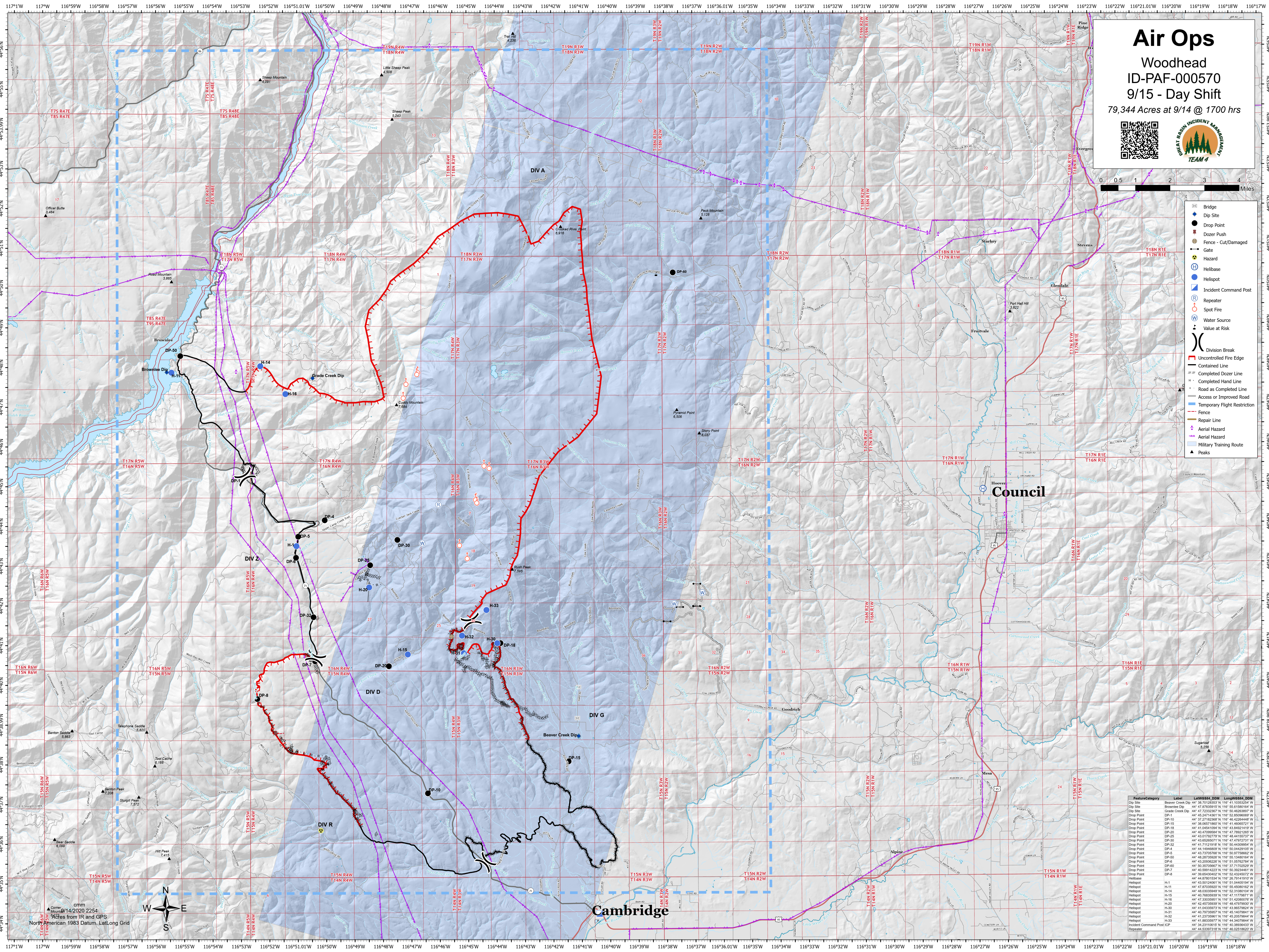
Woodhead
ID-PAF-000570

9/15 - Day Shift

79,344 Acres at 9/14 @ 1700 hrs



- Bridge
- Dip Site
- Drop Point
- Dozer Push
- Fence - Cut/Damaged
- Gate
- Hazard
- Helibase
- Helispot
- Incident Command Post
- Repeater
- Spot Fire
- Water Source
- Value at Risk
- Division Break
- Uncontrolled Fire Edge
- Contained Line
- Completed Dozer Line
- Completed Hand Line
- Road as Completed Line
- Access or Improved Road
- Temporary Flight Restriction
- Fence
- Repair Line
- Aerial Hazard
- Military Training Route
- Peaks



Council

Cambridge

cm
Created 9/14/2020 2254
Acres from IR and GPS
North American 1983 Datum, Lat/Long Grid

Feature/Category	Label	Lat/WGS84_DOM	Long/WGS84_DOM
Dip Site	Beaver Creek Dip	44° 38' 70.283532" N	116° 41' 10.93254" W
Dip Site	Brownlee Dip	44° 47' 0.732815" N	116° 50' 8.150164" W
Drop Point	Grade Creek Dip	44° 45' 24.714381" N	116° 52' 8.859696" W
Drop Point	DP-1	44° 37' 27.162388" N	116° 50' 46.204484" W
Drop Point	DP-15	44° 38' 08.071862" N	116° 41' 46.06721" W
Drop Point	DP-18	44° 41' 04.615981" N	116° 50' 38.021418" W
Drop Point	DP-20	44° 40' 47.098962" N	116° 47' 7.892126" W
Drop Point	DP-26	44° 43' 01.762779" N	116° 48' 44.59731" W
Drop Point	DP-30	44° 43' 46.962071" N	116° 47' 47.27211" W
Drop Point	DP-32	44° 41' 7.112181" N	116° 50' 44.439954" W
Drop Point	DP-4	44° 44' 14.646808" N	116° 50' 04.029100" W
Drop Point	DP-5	44° 43' 7.935768" N	116° 50' 97.75862" W
Drop Point	DP-8	44° 48' 20.750288" N	116° 50' 1.948014" W
Drop Point	DP-8	44° 43' 20.936228" N	116° 51' 05.92784" W
Drop Point	DP-40	44° 50' 30.76887" N	116° 37' 71.70252" W
Drop Point	DP-2	44° 40' 5.8814222" N	116° 52' 43.245072" W
Drop Point	DP-8	44° 39' 8.543402" N	116° 52' 43.245072" W
Drop Point	DP-2	44° 44' 8.7801538" N	116° 50' 39.24418" W
Helispot	H-1	44° 43' 50.124881" N	116° 51' 04.400154" W
Helispot	H-11	44° 47' 3.302592" N	116° 47' 11.77881" W
Helispot	H-14	44° 48' 0.032944" N	116° 52' 31.980104" W
Helispot	H-15	44° 40' 7.835899" N	116° 47' 11.77881" W
Helispot	H-16	44° 47' 3.302592" N	116° 47' 11.77881" W
Helispot	H-20	44° 42' 4.573593" N	116° 48' 47.79630" W
Helispot	H-30	44° 41' 0.325897" N	116° 45' 20.578844" W
Helispot	H-31	44° 40' 7.935957" N	116° 45' 14.79841" W
Helispot	H-32	44° 41' 2.373288" N	116° 45' 20.578844" W
Helispot	H-33	44° 41' 0.823507" N	116° 45' 34.79841" W
Incident Command Post	ICP	44° 34' 23.11610" N	116° 40' 38.98433" W
Repeater		44° 44' 0.333731" N	116° 40' 0.001862" W