

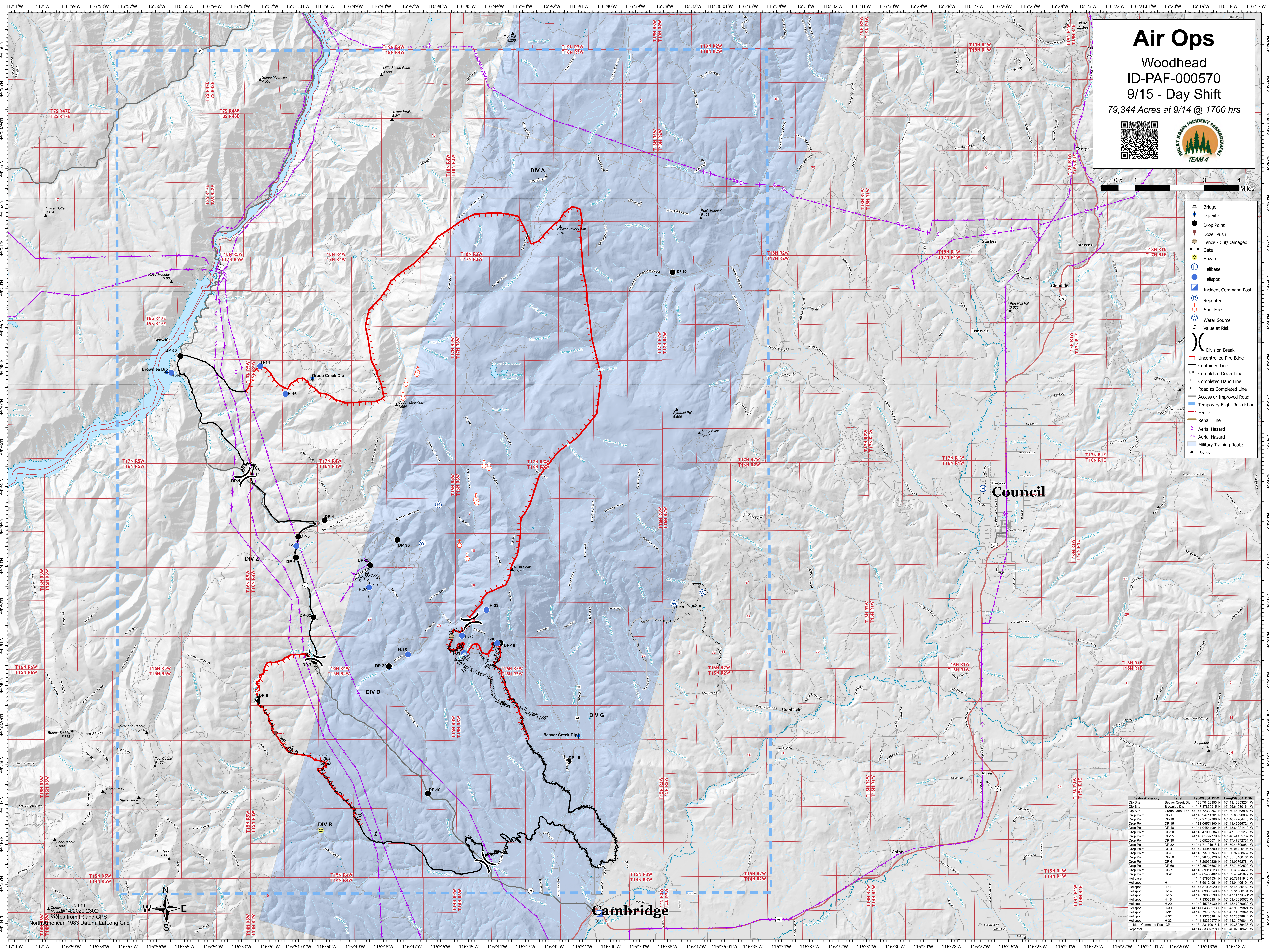
Air Ops

Woodhead
ID-PAF-000570
9/15 - Day Shift

79,344 Acres at 9/14 @ 1700 hrs



- Bridge
- Dip Site
- Dozer Push
- Fence - Cut/Damaged
- Gate
- Hazard
- Helibase
- Helisport
- Incident Command Post
- Repeater
- Spot Fire
- Water Source
- Value at Risk
- Division Break
- Uncontrolled Fire Edge
- Contained Line
- Completed Dozer Line
- Completed Hand Line
- Access or Improved Road
- Temporary Flight Restriction
- Fence
- Repair Line
- Aerial Hazard
- Military Training Route
- Peaks



Feature/Category	Label	Lat/WGS84_DOM	Long/WGS84_DOM
Dip Site	Beaver Creek Dip	44° 38' 70.283522" N	116° 41' 10.932544" W
Dip Site	Brownlee Dip	44° 47' 0.7925915" N	116° 50' 8.150164" W
Dip Site	Grade Creek Dip	44° 47' 23.23287" N	116° 50' 45.803891" W
Drop Point	DP-1	44° 45' 24.714381" N	116° 50' 45.803891" W
Drop Point	DP-10	44° 37' 27.152368" N	116° 48' 42.964468" W
Drop Point	DP-15	44° 38' 00.571802" N	116° 41' 46.062721" W
Drop Point	DP-18	44° 41' 04.541094" N	116° 50' 34.021419" W
Drop Point	DP-20	44° 40' 47.098958" N	116° 47' 7.8921265" W
Drop Point	DP-25	44° 43' 01.762779" N	116° 48' 44.155731" W
Drop Point	DP-30	44° 43' 45.062071" N	116° 47' 47.27211" W
Drop Point	DP-32	44° 41' 7.1121818" N	116° 50' 44.309954" W
Drop Point	DP-4	44° 44' 14.6468001" N	116° 50' 04.029190" W
Drop Point	DP-5	44° 43' 7.9757681" N	116° 50' 97.758682" W
Drop Point	DP-6	44° 48' 28.7352628" N	116° 50' 13.800164" W
Drop Point	DP-8	44° 43' 20.9362281" N	116° 51' 05.76734" W
Drop Point	DP-40	44° 50' 37.05687" N	116° 37' 71.70252" W
Drop Point	DP-2	44° 40' 5.9814222" N	116° 52' 43.245072" W
Drop Point	DP-8	44° 39' 6.5434022" N	116° 52' 43.245072" W
Drop Point	DP-13	44° 44' 0.7801532" N	116° 50' 39.24419" W
Helibase	H-1	44° 43' 50.124081" N	116° 51' 04.040184" W
Helibase	H-11	44° 47' 0.7925915" N	116° 50' 45.803891" W
Helibase	H-14	44° 48' 0.0335948" N	116° 52' 31.980104" W
Helibase	H-15	44° 40' 7.8835939" N	116° 47' 11.77081" W
Helibase	H-16	44° 47' 0.7925915" N	116° 50' 45.803891" W
Helibase	H-20	44° 42' 45.7359397" N	116° 48' 47.979630" W
Helibase	H-30	44° 41' 04.541094" N	116° 50' 34.021419" W
Helibase	H-31	44° 40' 7.9757681" N	116° 45' 14.079841" W
Helibase	H-32	44° 41' 2.735981" N	116° 45' 20.207984" W
Helibase	H-33	44° 41' 04.541094" N	116° 48' 34.021419" W
Incident Command Post (ICP)		44° 34' 21.01619" N	116° 40' 38.034431" W
Repeater		44° 44' 0.3337318" N	116° 40' 0.0018620" W

cm
Created 9/14/2020 23:02
79,344 Acres from IR and GPS
North American 1983 Datum, Lat/Long Grid