

116°56'W 116°54'W 116°52'W 116°50'W 116°48'W 116°46'W 116°44'W 116°42'W 116°40'W 116°38'W 116°36.01'W 116°34'W 116°32'W 116°30'W 116°28'W 116°26'W

Transportation

Woodhead
ID-PAF-000570

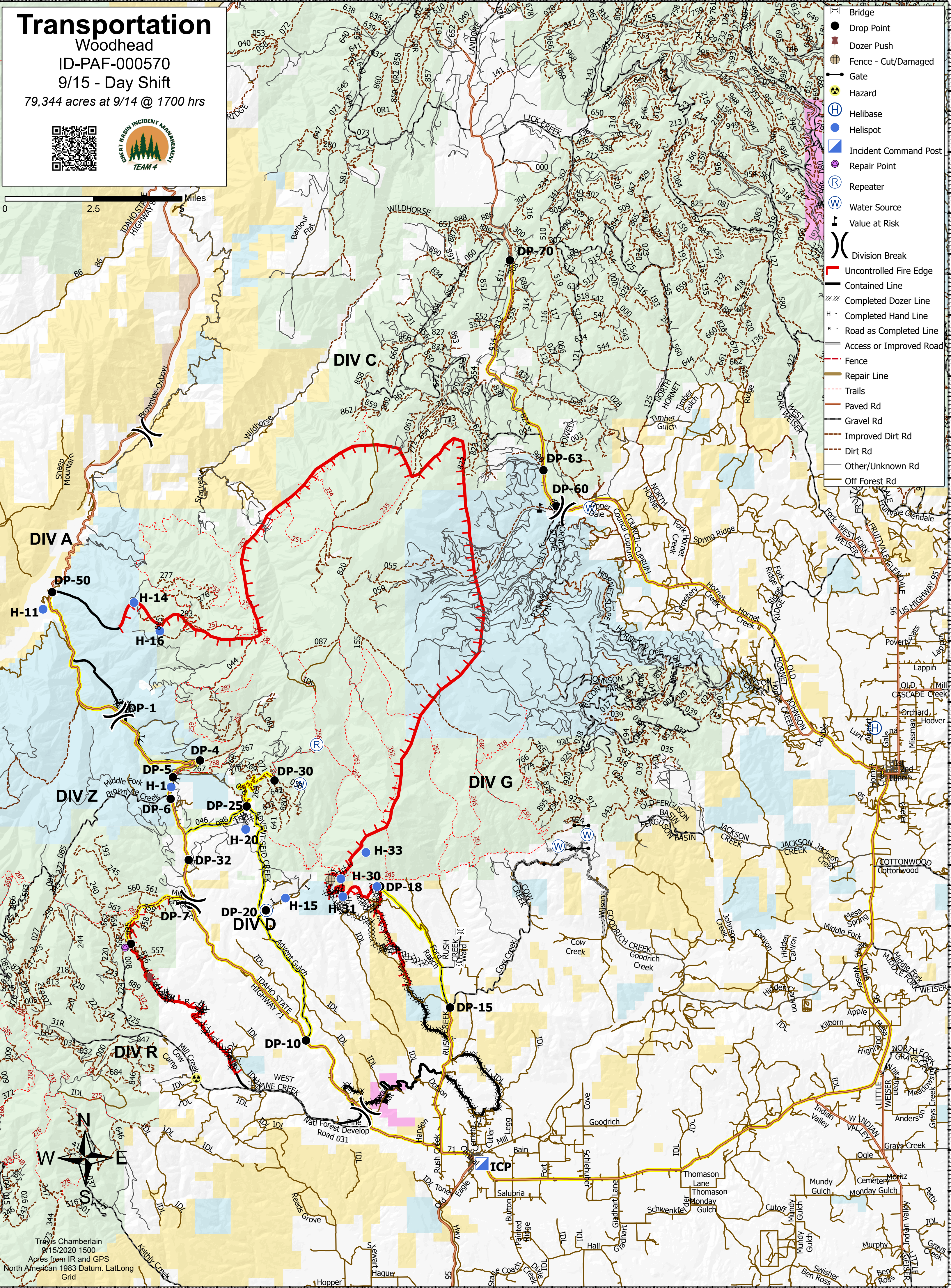
9/15 - Day Shift

79,344 acres at 9/14 @ 1700 hrs



0 2.5 Miles

- Bridge
- Drop Point
- Dozer Push
- Fence - Cut/Damaged
- Gate
- Hazard
- Helibase
- Helispot
- Incident Command Post
- Repair Point
- Repeater
- Water Source
- Value at Risk
- Division Break
- Uncontrolled Fire Edge
- Contained Line
- Completed Dozer Line
- Completed Hand Line
- Road as Completed Line
- Access or Improved Road
- Fence
- Repair Line
- Trails
- Paved Rd
- Gravel Rd
- Improved Dirt Rd
- Dirt Rd
- Other/Unknown Rd
- Off Forest Rd



116°57'W 116°55'W 116°53'W 116°51.01'W 116°49'W 116°47'W 116°45'W 116°43'W 116°41'W 116°39'W 116°37'W 116°35'W 116°33'W 116°31'W 116°29'W 116°27'W 116°25'W

44°32'N 44°33'N 44°34'N 44°35'N 44°36'N 44°37'N 44°38'N 44°38.99'N 44°40'N 44°41'N 44°42'N 44°43'N 44°44'N 44°45'N 44°46'N 44°47'N 44°48'N 44°49'N 44°50'N 44°51'N 44°53.99'N 44°55'N 44°56'N 44°57'N 44°58'N 44°59'N 45°0'N 45°1'N 45°2'N

44°31.49'N 44°32'N 44°33'N 44°34'N 44°35'N 44°36'N 44°37'N 44°38'N 44°38.99'N 44°40'N 44°41'N 44°42'N 44°43'N 44°44'N 44°45'N 44°46'N 44°47'N 44°48'N 44°49'N 44°50'N 44°51'N 44°53.99'N 44°55'N 44°56'N 44°57'N 44°58'N 44°59'N 45°0'N 45°1'N 45°2'N

Travis Chamberlain
9/15/2020 1500
Acres from IR and GPS
North American 1983 Datum, Lat/Long
Grid