

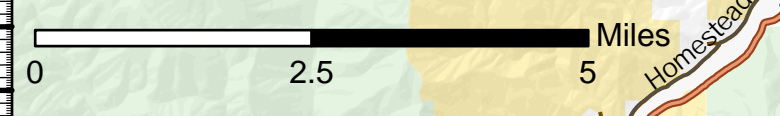
116°57'W 116°55'W 116°53'W 116°51.01'W 116°49'W 116°47'W 116°45'W 116°43'W 116°41'W 116°39'W 116°37'W 116°35'W 116°33'W 116°31'W 116°29'W 116°27'W 116°25'W 116°23'W

# Transportation

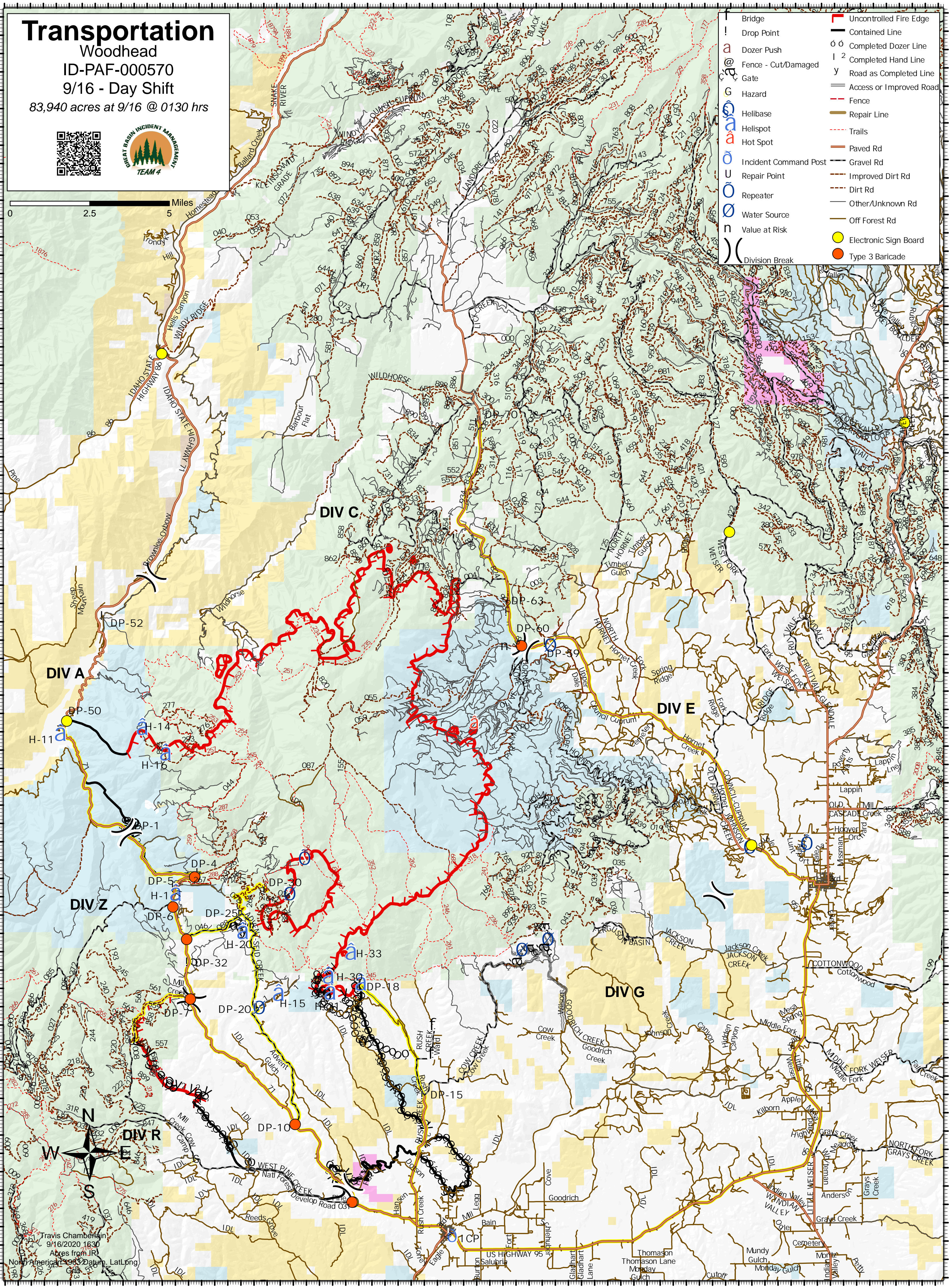
Woodhead  
ID-PAF-000570

9/16 - Day Shift

83,940 acres at 9/16 @ 0130 hrs



Bridge	Uncontrolled Fire Edge
Drop Point	Contained Line
Dozer Push	Completed Dozer Line
Fence - Cut/Damaged	Completed Hand Line
Gate	Road as Completed Line
Hazard	Access or Improved Road
Helibase	Fence
Helispot	Repair Line
Hot Spot	Trails
Incident Command Post	Paved Rd
Repair Point	Gravel Rd
Repeater	Improved Dirt Rd
Water Source	Dirt Rd
Value at Risk	Other/Unknown Rd
	Off Forest Rd
	Electronic Sign Board
	Type 3 Baricade



116°57'W 116°55'W 116°53'W 116°51.01'W 116°49'W 116°47'W 116°45'W 116°43'W 116°41'W 116°39'W 116°37'W 116°35'W 116°33'W 116°31'W 116°29'W 116°27'W 116°25'W 116°23'W

44°33.5'N

44°33.5'N

Travis Chamberlain  
9/16/2020 1630  
Acres from IR  
North America 1983 Datum, Lat/Long