

Air Ops

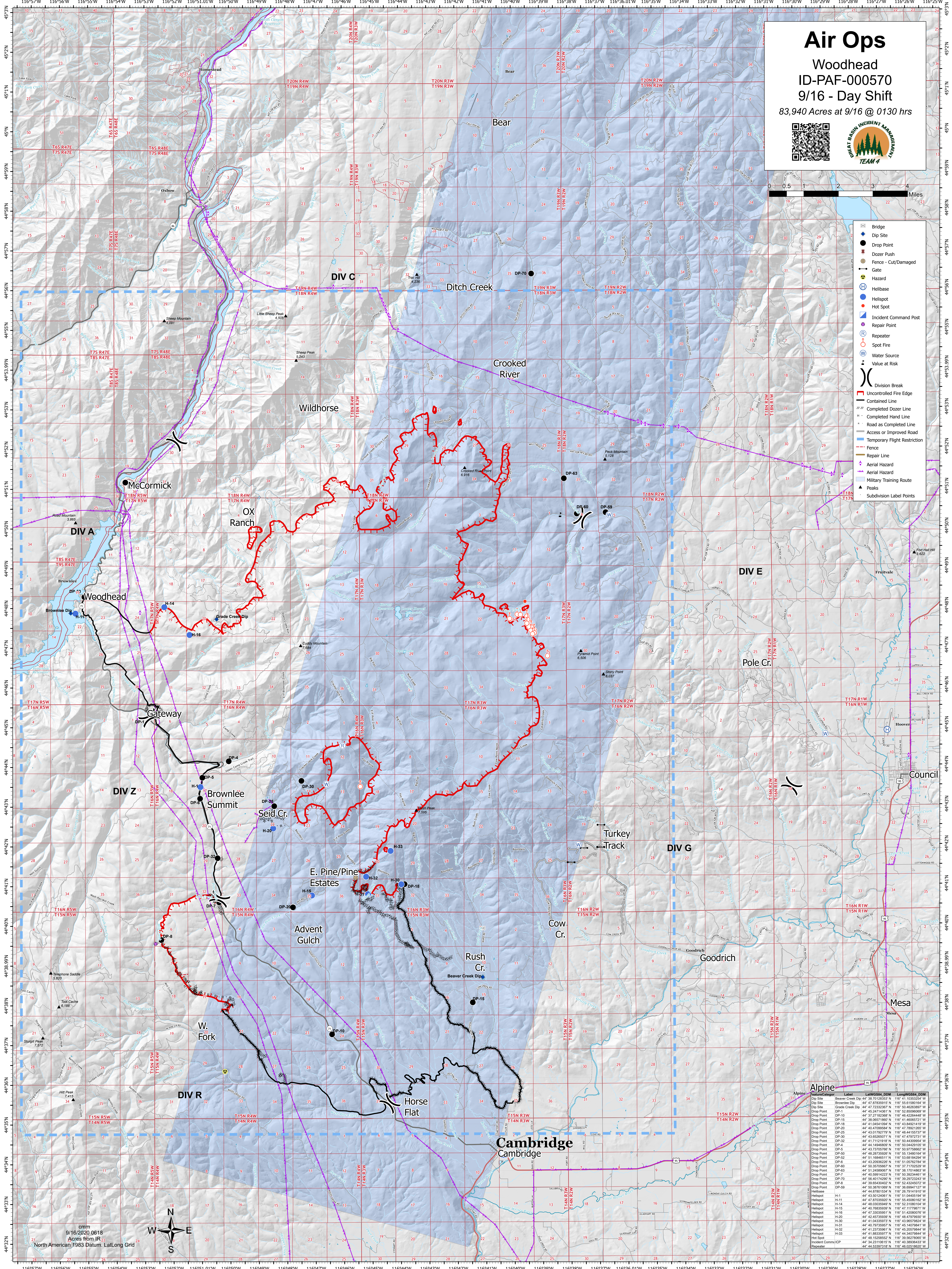
Woodhead ID-PAF-000570

9/16 - Day Shift

83,940 Acres at 9/16 @ 0130 hrs



- Bridge
- Dip Site
- Drop Point
- Dozer Push
- Fence - Cut/Damaged
- Gate
- Hazard
- Helibase
- Helispot
- Hot Spot
- Incident Command Post
- Repair Point
- Repeater
- Spot Fire
- Water Source
- Value at Risk
- Division Break
- Uncontrolled Fire Edge
- Contained Line
- Completed Dozer Line
- Completed Hand Line
- Access or Improved Road
- Temporary Flight Restriction
- Fence
- Repair Line
- Aerial Hazard
- Aerial Hazard
- Military Training Route
- Peaks
- Subdivision Label Points



Feature/Category	Label	LatN	LongW	DOM
Dip Site	Brownlee Dip	44° 47' 878359152 N	116° 55' 51580164 W	
Dip Site	Gravel Creek Dip	44° 47' 223233023 N	116° 50' 48098987 W	
Drop Point	DP-1	44° 45' 24714361 N	116° 52' 86096089 W	
Drop Point	DP-10	44° 37' 27182388 N	116° 48' 42064448 W	
Drop Point	DP-15	44° 39' 06511869 N	116° 41' 46065211 W	
Drop Point	DP-16	44° 41' 04541094 N	116° 43' 84621419 W	
Drop Point	DP-20	44° 45' 47055939 N	116° 47' 78921295 W	
Drop Point	DP-25	44° 43' 01762779 N	116° 48' 44159273 W	
Drop Point	DP-30	44° 45' 45065697 N	116° 38' 29232343 W	
Drop Point	DP-32	44° 41' 71121912 N	116° 50' 44309564 W	
Drop Point	DP-4	44° 44' 14846808 N	116° 50' 04429105 W	
Drop Point	DP-4	44° 43' 73705909 N	116° 50' 47768962 W	
Drop Point	DP-50	44° 46' 28735520 N	116° 55' 13480164 W	
Drop Point	DP-62	44° 51' 16846511 N	116° 52' 86194264 W	
Drop Point	DP-6	44° 43' 20936228 N	116° 51' 05762784 W	
Drop Point	DP-63	44° 39' 30760887 N	116° 37' 71025209 W	
Drop Point	DP-63	44° 51' 24569667 N	116° 48' 71788183 W	
Drop Point	DP-7	44° 40' 59914222 N	116° 50' 39234461 W	
Drop Point	DP-7	44° 56' 40174569 N	116° 39' 29232343 W	
Drop Point	DP-8	44° 39' 65430402 N	116° 52' 43245072 W	
Drop Point	DP-9	44° 50' 38761089 N	116° 36' 6949127 W	
Drop Point	DP-9	44° 44' 87801534 N	116° 28' 78141910 W	
Helibase	H-1	44° 43' 50724081 N	116° 51' 04400194 W	
Helibase	H-11	44° 47' 878359152 N	116° 55' 49089162 W	
Helibase	H-14	44° 46' 03035942 N	116° 52' 31890104 W	
Helibase	H-15	44° 42' 78559399 N	116° 47' 11788183 W	
Helibase	H-16	44° 47' 33035951 N	116° 51' 42080076 W	
Helibase	H-20	44° 42' 43735889 N	116° 48' 37939300 W	
Helibase	H-30	44° 41' 04335972 N	116° 43' 96579824 W	
Helibase	H-31	44° 40' 79735957 N	116° 45' 14079841 W	
Helibase	H-32	44° 41' 23735961 N	116° 45' 20079844 W	
Helibase	H-33	44° 41' 88335977 N	116° 44' 34079844 W	
Helibase	H-33	44° 41' 15283599 N	116° 39' 29232343 W	
Helibase	H-33	44° 34' 31001012 N	116° 40' 38934333 W	
Incident Command Post		44° 44' 53397318 N	116° 46' 02118020 W	
Repeater				

cmm
9/16/2020 0618
Acres from I.R.
North American 1983 Datum, LatLong Grid

