

Air Ops

Woodhead

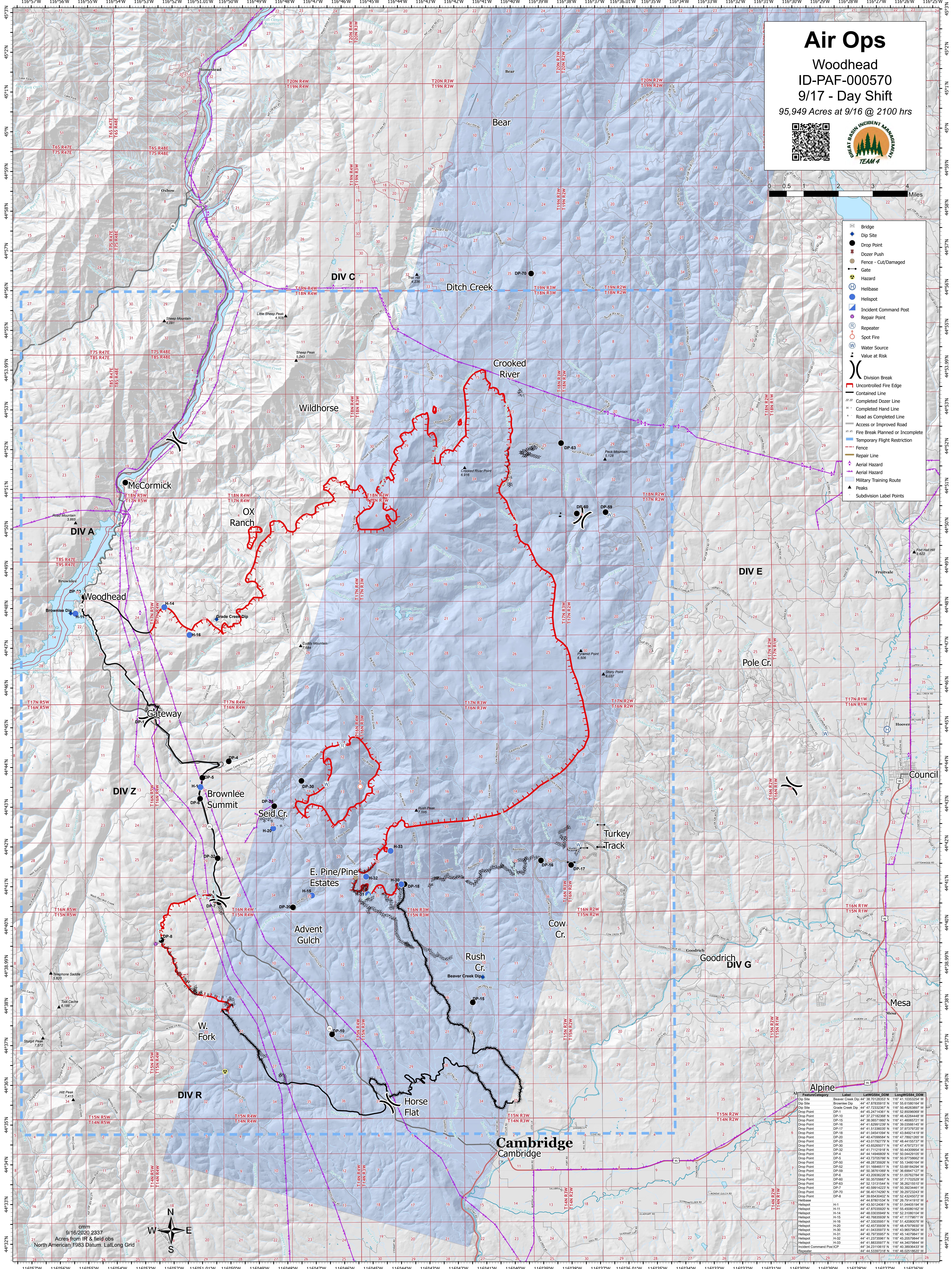
ID-PAF-000570

9/17 - Day Shift

95,949 Acres at 9/16 @ 2100 hrs



- Bridge
- Dip Site
- Drop Point
- Dozer Push
- Fence - Cut/Damaged
- Gate
- Hazard
- Helibase
- Helispot
- Incident Command Post
- Repair Point
- Repeater
- Spot Fire
- Water Source
- Value at Risk
- Division Break
- Uncontrolled Fire Edge
- Contained Line
- Completed Dozer Line
- Completed Hand Line
- Road as Completed Line
- Access or Improved Road
- Fire Break Planned or Incomplete
- Temporary Flight Restriction
- Fence
- Repair Line
- Aerial Hazard
- Aerial Hazard
- Military Training Route
- Peaks
- Subdivision Label Points



cm
9/16/2020 2337
Acres from IR & field obs
North American 1983 Datum, Lat/Long Grid

Feature/Category	Label	Lat	Long	WGS84_DTM	WGS84_DTM
Dip Site	Beaver Creek Dip	44° 47' 37.8915" N	116° 56' 51.0324" W		
Dip Site	Grade Creek Dip	44° 47' 23.2389" N	116° 56' 51.0324" W		
Drop Point	DP-1	44° 45' 24.1438" N	116° 52' 85.0609" W		
Drop Point	DP-10	44° 37' 16.3089" N	116° 46' 42.2444" W		
Drop Point	DP-11	44° 38' 50.9789" N	116° 46' 46.0677" W		
Drop Point	DP-16	44° 41' 42.9912" N	116° 50' 33.5614" W		
Drop Point	DP-17	44° 41' 11.9219" N	116° 50' 37.7025" W		
Drop Point	DP-18	44° 41' 04.5419" N	116° 48' 44.8214" W		
Drop Point	DP-25	44° 40' 47.0998" N	116° 47' 7.8212" W		
Drop Point	DP-26	44° 40' 47.0998" N	116° 47' 7.8212" W		
Drop Point	DP-30	44° 43' 52.9677" N	116° 47' 47.9273" W		
Drop Point	DP-32	44° 41' 11.9219" N	116° 50' 37.7025" W		
Drop Point	DP-4	44° 41' 49.6899" N	116° 50' 04.2910" W		
Drop Point	DP-5	44° 42' 37.0516" N	116° 50' 37.7025" W		
Drop Point	DP-6	44° 48' 28.7592" N	116° 55' 13.4801" W		
Drop Point	DP-50	44° 51' 18.6451" N	116° 53' 08.1842" W		
Drop Point	DP-51	44° 50' 30.9199" N	116° 53' 08.1842" W		
Drop Point	DP-6	44° 43' 20.9629" N	116° 51' 05.7874" W		
Drop Point	DP-60	44° 50' 30.9199" N	116° 53' 08.1842" W		
Drop Point	DP-63	44° 50' 30.9199" N	116° 53' 08.1842" W		
Drop Point	DP-65	44° 50' 30.9199" N	116° 53' 08.1842" W		
Drop Point	DP-7	44° 40' 39.9199" N	116° 50' 37.7025" W		
Drop Point	DP-70	44° 56' 40.7429" N	116° 39' 29.7234" W		
Drop Point	DP-8	44° 39' 05.3492" N	116° 52' 43.2457" W		
Drop Point	DP-80	44° 44' 30.9199" N	116° 50' 37.7025" W		
Helibase	H-11	44° 51' 04.0514" N	116° 51' 04.0514" W		
Helibase	H-12	44° 47' 02.0919" N	116° 48' 44.8214" W		
Helibase	H-13	44° 48' 03.0949" N	116° 52' 31.0801" W		
Helibase	H-14	44° 40' 7.8212" N	116° 47' 7.8212" W		
Helibase	H-15	44° 47' 37.8915" N	116° 56' 51.0324" W		
Helibase	H-16	44° 42' 45.7369" N	116° 48' 47.9782" W		
Helibase	H-20	44° 41' 48.3397" N	116° 50' 38.9786" W		
Helibase	H-30	44° 40' 7.8212" N	116° 47' 7.8212" W		
Helibase	H-31	44° 40' 7.8212" N	116° 47' 7.8212" W		
Helibase	H-32	44° 41' 23.7369" N	116° 50' 38.9786" W		
Helibase	H-33	44° 41' 88.3397" N	116° 44' 34.0784" W		
Helibase	H-34	44° 44' 33.9199" N	116° 48' 44.8214" W		
Incident Command Post	ICP	44° 44' 33.9199" N	116° 48' 44.8214" W		