

DIV C
Woodhead
ID-PAF-000570
89,685 Acres at 9/18 @ 0145 hrs



- Drop Point
- ⊙ Water Source
- ⊖ Value at Risk
- ⎓ Division Break
- ⎓ Uncontrolled Fire Edge
- ⎓ Contained Line
- ⊗ Completed Dozer Line
- ⎓ Road as Completed Line
- ⎓ Temporary Flight Restriction
- Bureau of Land Management (BLM)
- Other Federal
- State
- US Forest Service (USFS)
- Private; Undetermined
- Wildlife Management Area
- ⎓ Aerial Hazard
- Structures
- Timber Harvest
- Fuels Treatment

T7S R47E
T8S R47E
T8S R48E

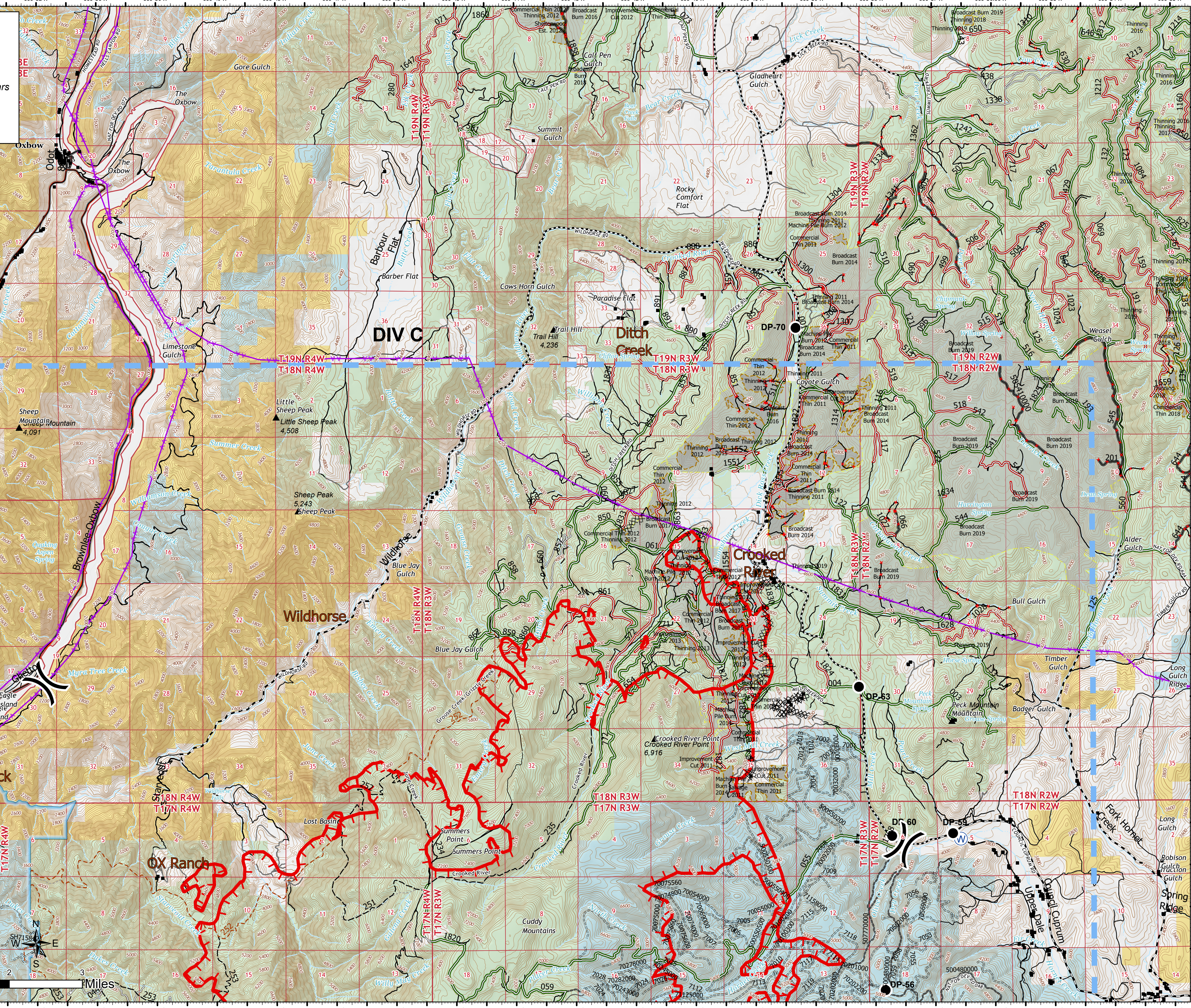
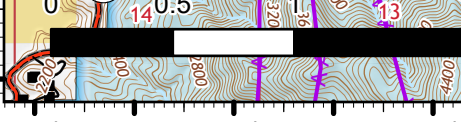
T8S R47E
T8S R48E

T18N R5W
T17N R5W

T18N R4W
T17N R4W

T17N R5W
T17N R4W

9/18/2024
Acres from IR
North American 1983 Datum
NAD 83



T18N R2W
T17N R2W

T18N R2W
T17N R2W

T18N R2W
T17N R2W

T18N R2W
T17N R2W

