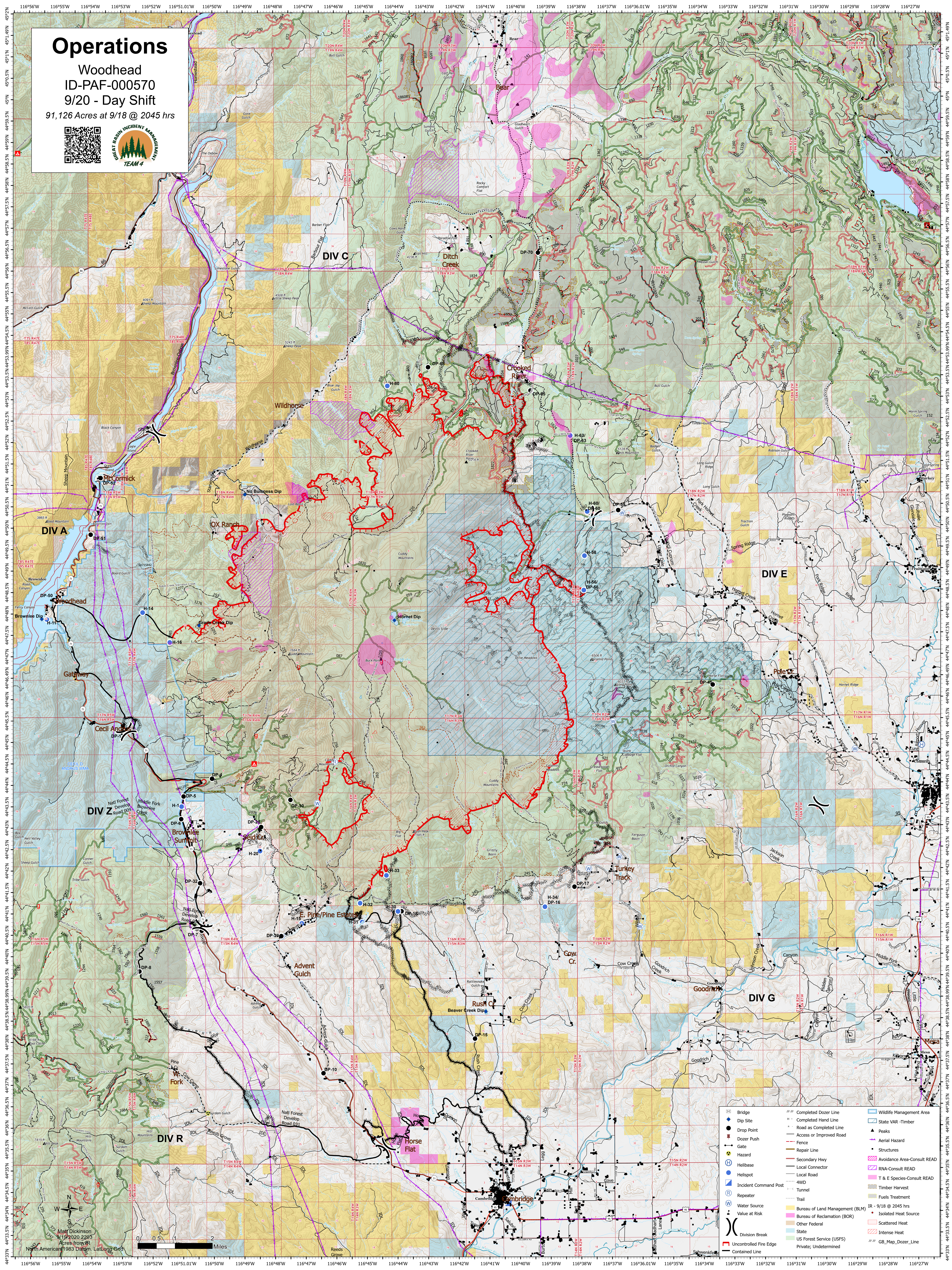


# Operations

Woodhead  
ID-PAF-000570  
9/20 - Day Shift  
91,126 Acres at 9/18 @ 2045 hrs



	Bridge		Completed Dozer Line		Wildlife Management Area
	Dip Site		Completed Hand Line		State VAR - Timber
	Drop Point		Dozer Push		Peaks
	Gate		Access or Improved Road		Aerial Hazard
	Hazard		Fence		Structures
	Helibase		Repair Line		Avoidance Area-Consult READ
	Helispot		Secondary Hwy		RNA-Consult READ
	Incident Command Post		Local Connector		T & E Species-Consult READ
	Water Source		Local Road		Timber Harvest
	Value at Risk		4WD		Fuels Treatment
	Division Break		Tunnel		IR - 9/18 @ 2045 hrs
	Uncontrolled Fire Edge		Trail		Isolated Heat Source
	Contained Line		Bureau of Land Management (BLM)		Scattered Heat
			Bureau of Reclamation (BOR)		Intense Heat
			Other Federal		GB_Map_Dozer_Line
			State		
			US Forest Service (USFS)		
			Private; Undetermined		

Matt Dickinson  
9/13/2020 2203  
Acres from VR  
North American #983 Diagram - Lailong Eric

