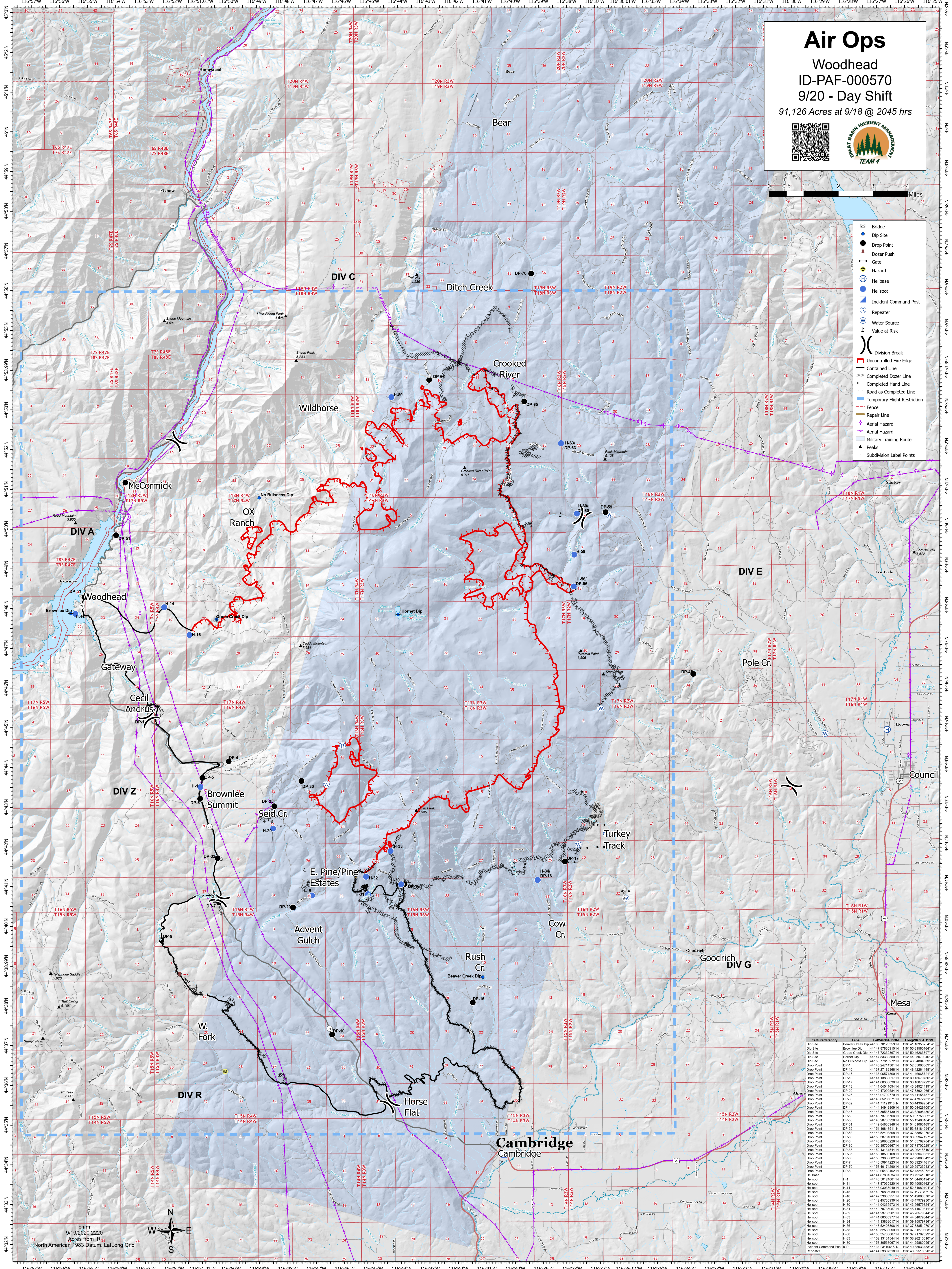


# Air Ops

Woodhead  
ID-PAF-000570  
9/20 - Day Shift  
91,126 Acres at 9/18 @ 2045 hrs



- Bridge
- Dip Site
- Drop Point
- Dozer Push
- Gate
- Hazard
- Helibase
- Helispot
- Incident Command Post
- Repeater
- Water Source
- Value at Risk
- Division Break
- Uncontrolled Fire Edge
- Contained Line
- Completed Dozer Line
- Completed Hand Line
- Road as Completed Line
- Temporary Flight Restriction
- Fence
- Repair Line
- Aerial Hazard
- Aerial Training Route
- Peaks
- Subdivision Label Points



FeatureCategory	Label	LatWGS84_DTM	LongWGS84_DTM
Dip Site	Beaver Creek Dip 44	38.70128357 N	116.411035254 W
Dip Site	Brownlee Dip	44.418783919 N	116.501801648 W
Dip Site	Gracie Creek Dip 44	47.7232387 N	116.504623897 W
Dip Site	Hornet Dip	44.218238398 N	116.442507948 W
Dip Site	No Business Dip	44.507781072 N	116.485946539 W
Drop Point	DP-1	44.271162389 N	116.524050609 W
Drop Point	DP-15	44.380871897 N	116.414606572 W
Drop Point	DP-16	44.411383289 N	116.482079448 W
Drop Point	DP-17	44.418033032 N	116.381887927 W
Drop Point	DP-18	44.418451098 N	116.438482419 W
Drop Point	DP-20	44.484706867 N	116.471862105 W
Drop Point	DP-25	44.531717277 N	116.484419237 W
Drop Point	DP-32	44.434650607 N	116.471702731 W
Drop Point	DP-34	44.417121918 N	116.504430964 W
Drop Point	DP-44	44.418484888 N	116.442080442 W
Drop Point	DP-45	44.483056439 N	116.332090486 W
Drop Point	DP-50	44.437357967 N	116.501775662 W
Drop Point	DP-52	44.482973589 N	116.483406189 W
Drop Point	DP-51	44.494863948 N	116.541080169 W
Drop Point	DP-52	44.511696517 N	116.531801249 W
Drop Point	DP-54	44.482488888 N	116.378385107 W
Drop Point	DP-59	44.503871089 N	116.384947127 W
Drop Point	DP-60	44.414706867 N	116.462079448 W
Drop Point	DP-60	44.503759687 N	116.371702529 W
Drop Point	DP-63	44.434650607 N	116.471702731 W
Drop Point	DP-65	44.531898188 N	116.395594831 W
Drop Point	DP-68	44.521318184 N	116.422080442 W
Drop Point	DP-70	44.405914223 N	116.503924461 W
Drop Point	DP-70	44.564017429 N	116.392252249 W
Helibase	H-1	44.48783919 N	116.523400722 W
Helibase	H-11	44.478783919 N	116.554500162 W
Helibase	H-14	44.418783919 N	116.523400722 W
Helibase	H-15	44.407853958 N	116.473175817 W
Helibase	H-16	44.473395951 N	116.514200070 W
Helibase	H-20	44.424673589 N	116.484419237 W
Helibase	H-30	44.418451098 N	116.438482419 W
Helibase	H-32	44.412373981 N	116.452057844 W
Helibase	H-33	44.418833977 N	116.443407844 W
Helibase	H-34	44.411898188 N	116.371702529 W
Helibase	H-36	44.482488888 N	116.378385107 W
Helibase	H-40	44.432059687 N	116.371702529 W
Helibase	H-40	44.503759687 N	116.371702529 W
Helibase	H-43	44.521318184 N	116.382021619 W
Helibase	H-40	44.533053067 N	116.442080442 W
Helibase	H-80	44.542318184 N	116.403894532 W
Incident Command Post	ICP	44.542318184 N	116.403894532 W
Repeater	R	44.412373981 N	116.452057844 W

cmm  
9/19/2020 2220  
Acres from IR:  
North American 1983 Datum, Lat/Long Grid

