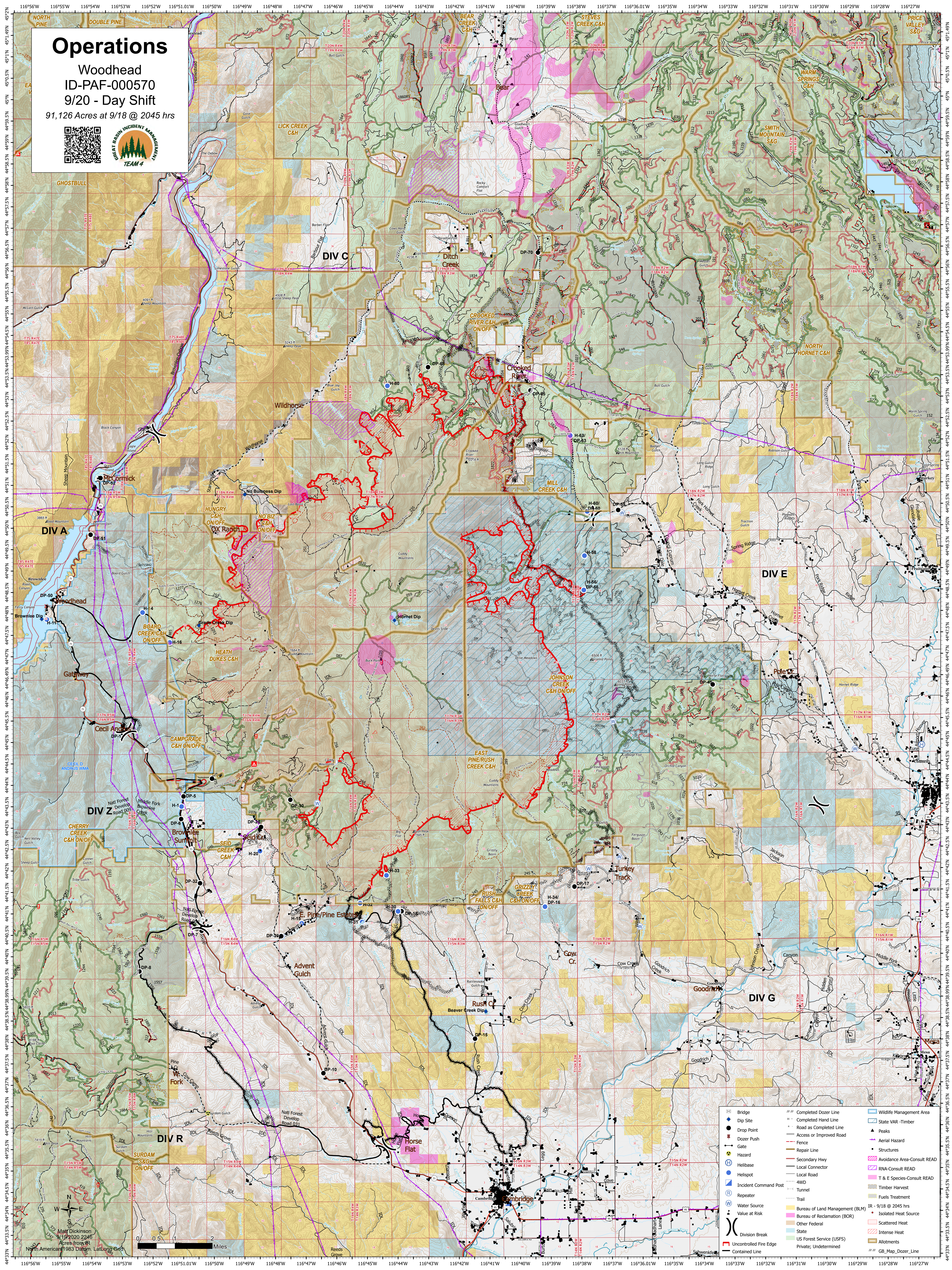


Operations

Woodhead
ID-PAF-000570
9/20 - Day Shift
91,126 Acres at 9/18 @ 2045 hrs



| | | | | | |
|--|------------------------|--|---|--|-----------------------------|
| | Bridge | | Completed Dozer Line | | Wildlife Management Area |
| | Dip Site | | Completed Hand Line | | State Var - Timber |
| | Drop Point | | Dozer Push | | Peaks |
| | Gate | | Access or Improved Road | | Aerial Hazard |
| | Hazard | | Repair Line | | Structures |
| | Helibase | | Secondary Hwy | | Avoidance Area-Consult READ |
| | Heliport | | Local Connector | | RNA-Consult READ |
| | Incident Command Post | | Local Road | | T & E Species-Consult READ |
| | Repeater | | 4WD | | Timber Harvest |
| | Water Source | | Tunnel | | Fuels Treatment |
| | Value at Risk | | Trail | | IR - 9/18 @ 2045 hrs |
| | Division Break | | Bureau of Land Management (BLM) | | Scattered Heat |
| | Uncontrolled Fire Edge | | Bureau of Reclamation (BOR) | | Intense Heat |
| | Contained Line | | Other Federal | | Allotments |
| | | | State | | GB_Map_Dozer_Line |
| | | | US Forest Service (USFS) Private; Undetermined | | |

Matt Dickinson
9/19/2020 22:45
Acres from IR
North American 1983 Data - Lullaug, Eric

