

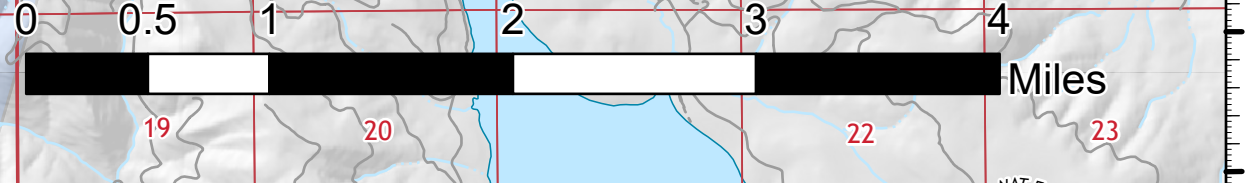
Air Ops

Woodhead

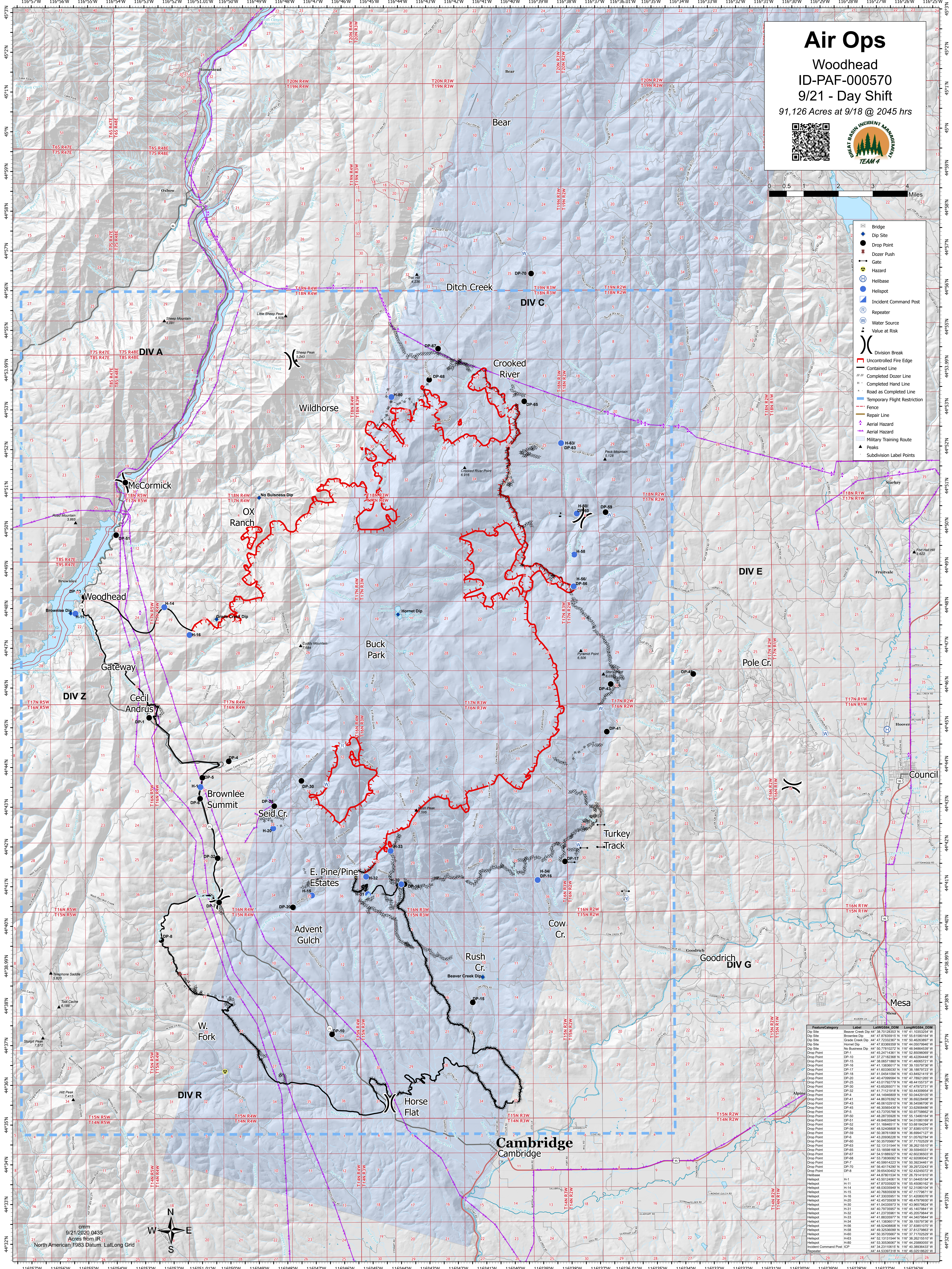
ID-PAF-000570

9/21 - Day Shift

91,126 Acres at 9/18 @ 2045 hrs



- Bridge
- Dip Site
- Drop Point
- Dozer Push
- Gate
- Hazard
- Helibase
- Helispot
- Incident Command Post
- Repeater
- Water Source
- Value at Risk
- Division Break
- Uncontrolled Fire Edge
- Contained Line
- Completed Dozer Line
- Completed Hand Line
- Road as Completed Line
- Temporary Flight Restriction
- Fence
- Repair Line
- Aerial Hazard
- Aerial Training Route
- Peaks
- Subdivision Label Points



Feature/Category	Label	Latitude	Longitude	MSID	DOM
Dip Site	Beaver Creek Dip	44° 38' 10.833333" N	116° 41' 10.532222" W		
Dip Site	Brownlee Dip	44° 47' 37.939111" N	116° 55' 01.801644" W		
Dip Site	Crow Creek Dip	44° 47' 22.920000" N	116° 50' 40.899999" W		
Dip Site	Hornet Dip	44° 47' 33.939393" N	116° 44' 00.799444" W		
Dip Site	No Business Dip	44° 50' 77.010277" N	116° 48' 48.646333" W		
Drop Point	DP-1	44° 45' 24.714381" N	116° 52' 25.009999" W		
Drop Point	DP-10	44° 37' 27.182000" N	116° 48' 42.044444" W		
Drop Point	DP-15	44° 36' 05.571800" N	116° 41' 46.057222" W		
Drop Point	DP-18	44° 41' 15.830017" N	116° 39' 15.979738" W		
Drop Point	DP-20	44° 41' 00.930000" N	116° 38' 40.799999" W		
Drop Point	DP-25	44° 43' 01.992777" N	116° 48' 44.159733" W		
Drop Point	DP-30	44° 43' 05.205071" N	116° 47' 47.972731" W		
Drop Point	DP-32	44° 41' 11.911111" N	116° 50' 43.909944" W		
Drop Point	DP-4	44° 44' 14.948000" N	116° 50' 04.291000" W		
Drop Point	DP-41	44° 44' 38.935000" N	116° 45' 40.799999" W		
Drop Point	DP-43	44° 46' 09.010010" N	116° 38' 54.969706" W		
Drop Point	DP-45	44° 45' 38.964000" N	116° 45' 42.909400" W		
Drop Point	DP-5	44° 43' 73.970706" N	116° 50' 07.996602" W		
Drop Point	DP-50	44° 48' 29.739000" N	116° 55' 13.480164" W		
Drop Point	DP-51	44° 48' 44.650000" N	116° 48' 40.999999" W		
Drop Point	DP-52	44° 51' 16.845111" N	116° 53' 08.184234" W		
Drop Point	DP-58	44° 48' 42.920800" N	116° 47' 33.951077" W		
Drop Point	DP-59	44° 50' 38.761000" N	116° 36' 09.047127" W		
Drop Point	DP-6	44° 45' 20.996200" N	116° 51' 02.702744" W		
Drop Point	DP-60	44° 41' 42.939000" N	116° 37' 17.029000" W		
Drop Point	DP-63	44° 52' 13.115444" N	116° 38' 26.215510" W		
Drop Point	DP-64	44° 51' 16.845111" N	116° 37' 33.851077" W		
Drop Point	DP-67	44° 54' 51.889327" N	116° 42' 00.365000" W		
Drop Point	DP-68	44° 51' 7.739000" N	116° 42' 28.905000" W		
Drop Point	DP-7	44° 40' 59.914223" N	116° 50' 30.346311" W		
Drop Point	DP-70	44° 56' 40.714200" N	116° 29' 23.254277" W		
Drop Point	DP-8	44° 38' 46.945000" N	116° 52' 43.007072" W		
Drop Point	DP-9	44° 48' 8.7601534" N	116° 28' 70.1419107" W		
Helibase	H-1	44° 48' 8.7601534" N	116° 28' 70.1419107" W		
Helibase	H-11	44° 47' 8.7601534" N	116° 55' 45.080162" W		
Helibase	H-20	44° 41' 42.939000" N	116° 48' 47.979738" W		
Helibase	H-30	44° 41' 04.359911" N	116° 43' 38.851077" W		
Helibase	H-32	44° 41' 23.739000" N	116° 47' 17.981171" W		
Helibase	H-33	44° 41' 38.939000" N	116° 44' 36.979844" W		
Helibase	H-34	44° 41' 18.960111" N	116° 38' 42.979738" W		
Helibase	H-56	44° 48' 52.408000" N	116° 37' 33.851077" W		
Helibase	H-58	44° 45' 32.939000" N	116° 37' 33.851077" W		
Helibase	H-60	44° 50' 37.959000" N	116° 37' 17.029000" W		
Helibase	H-63	44° 51' 13.115444" N	116° 38' 26.215510" W		
Helibase	H-80	44° 53' 30.530000" N	116° 44' 28.905000" W		
Incident Command Post	ICP	44° 34' 23.110100" N	116° 40' 38.943333" W		
Repeater	R	44° 44' 43.939111" N	116° 40' 25.918000" W		

cmm
9/21/2020 0435
Acres from IR:
North American 1983 Datum, LatLong Grid

