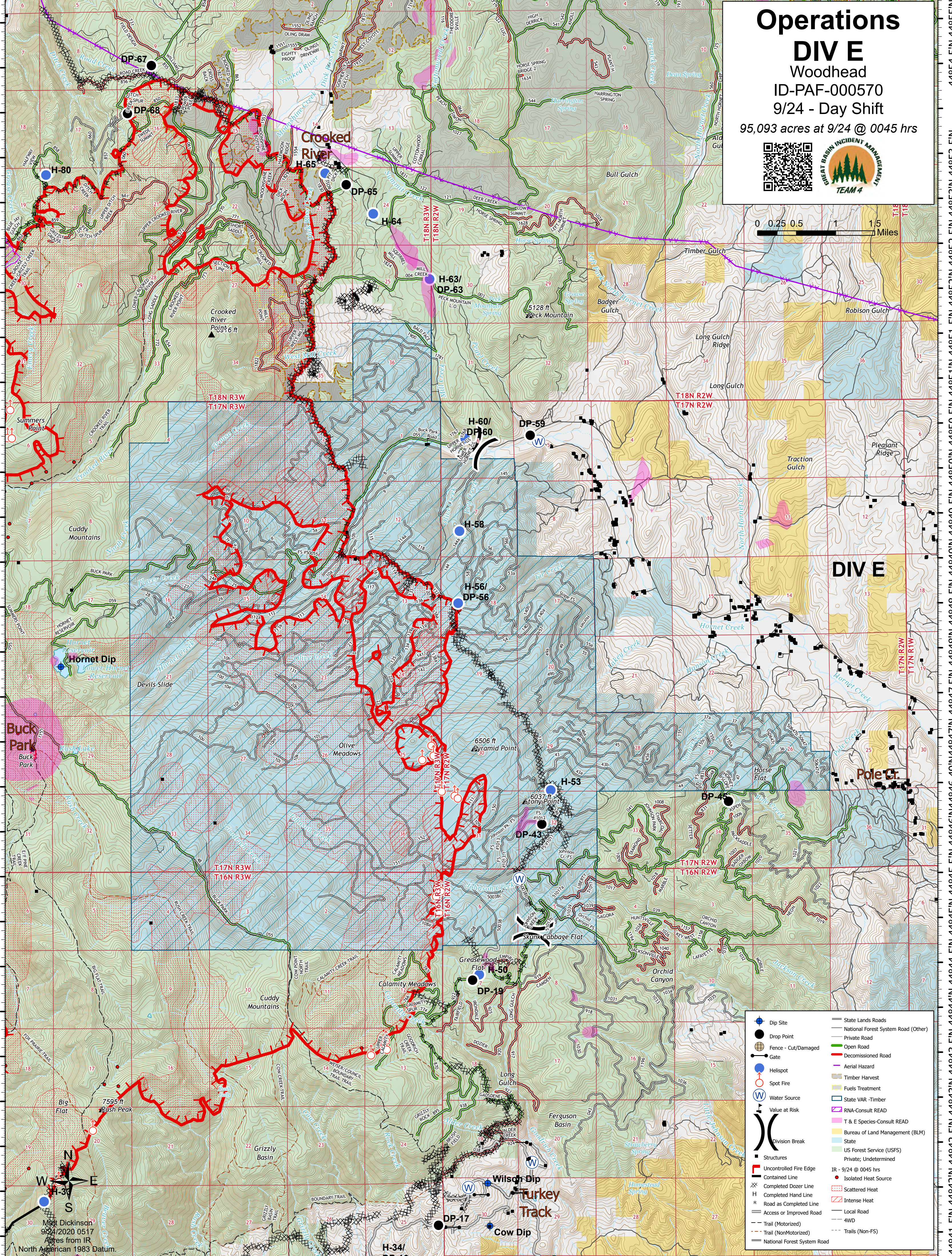


# Operations DIV E

Woodhead  
ID-PAF-000570

9/24 - Day Shift

95,093 acres at 9/24 @ 0045 hrs



	Dip Site		State Lands Roads
	Drop Point		National Forest System Road (Other)
	Fence - Cut/Damaged		Private Road
	Gate		Open Road
	Helispot		Decommissioned Road
	Spot Fire		Aerial Hazard
	Water Source		Timber Harvest
	Value at Risk		Fuels Treatment
	Division Break		State VAR - Timber
	Structures		RNA-Consult READ
	Uncontrolled Fire Edge		T & E Species-Consult READ
	Contained Line		Bureau of Land Management (BLM)
	Completed Dozer Line		State
	Completed Hand Line		US Forest Service (USFS)
	Road as Completed Line		Private; Undetermined
	Access or Improved Road		IR - 9/24 @ 0045 hrs
	Trail (Motorized)		Isolated Heat Source
	Trail (NonMotorized)		Scattered Heat
	National Forest System Road		Intense Heat
			Local Road
			4WD
			Trails (Non-FS)