

# Operations

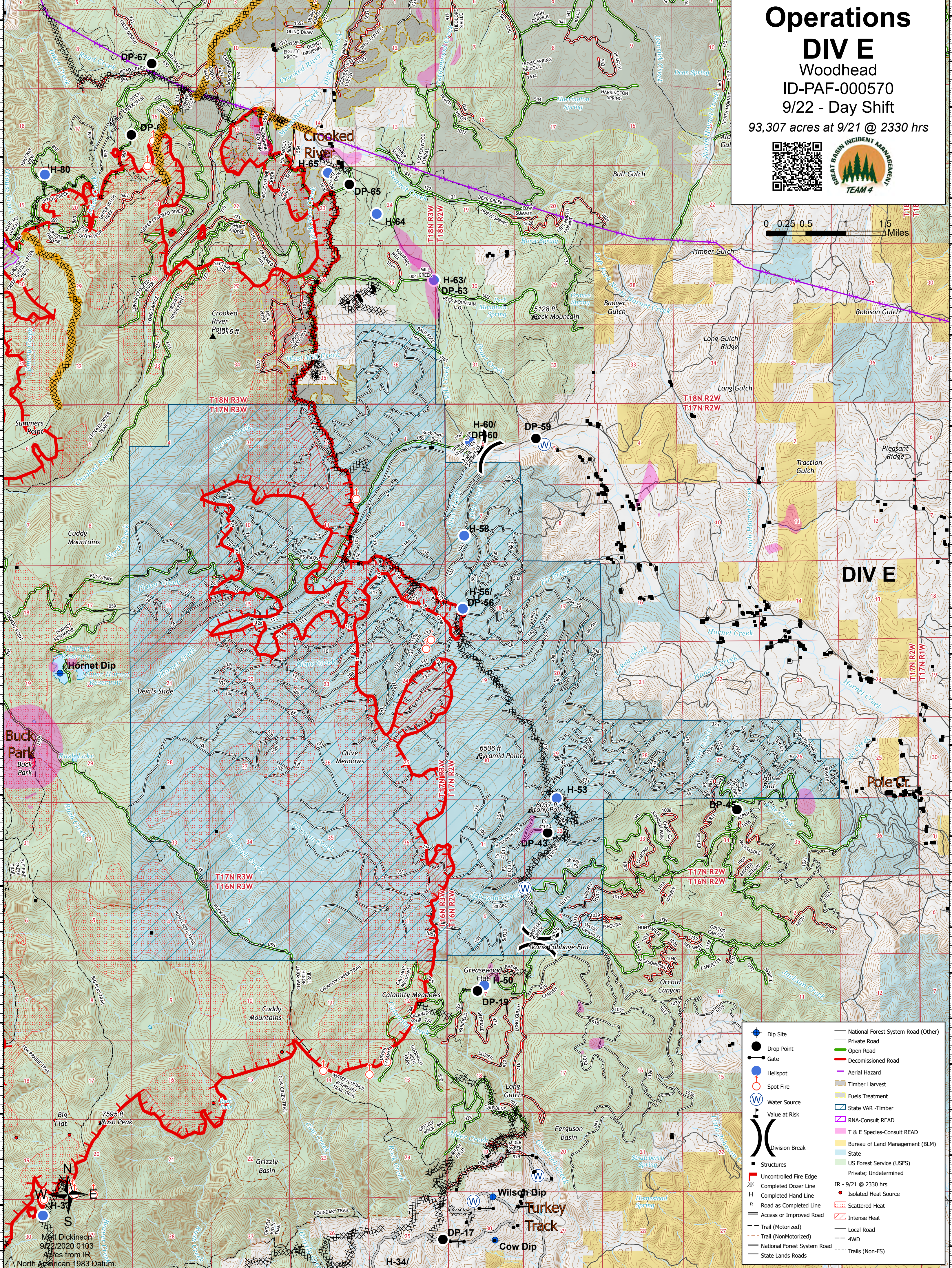
## DIV E

Woodhead

ID-PAF-000570

9/22 - Day Shift

93,307 acres at 9/21 @ 2330 hrs



DIV E

Pole Cr.

- Dip Site
- Drop Point
- Gate
- Helispot
- Spot Fire
- Water Source
- Value at Risk
- Division Break
- Structures
- Uncontrolled Fire Edge
- Completed Dozer Line
- Completed Hand Line
- Road as Completed Line
- Access or Improved Road
- Trail (Motorized)
- Trail (Non-Motorized)
- National Forest System Road
- State Lands Roads
- National Forest System Road (Other)
- Private Road
- Open Road
- Decommissioned Road
- Aerial Hazard
- Timber Harvest
- Fuels Treatment
- State VAR - Timber
- RNA-Consult READ
- T & E Species-Consult READ
- Bureau of Land Management (BLM)
- State
- US Forest Service (USFS)
- Private; Undetermined
- IR - 9/21 @ 2330 hrs
- Isolated Heat Source
- Scattered Heat
- Intense Heat
- Local Road
- 4WD
- Trails (Non-FS)

44°54.5'N 44°53.5'N 44°52.5'N 44°51.5'N 44°50.5'N 44°49.5'N 44°48.5'N 44°47.5'N 44°46.5'N 44°45.5'N 44°44.5'N 44°43.5'N 44°42.5'N 44°41.5'N

44°54.5'N 44°53.5'N 44°52.5'N 44°51.5'N 44°50.5'N 44°49.5'N 44°48.5'N 44°47.5'N 44°46.5'N 44°45.5'N 44°44.5'N 44°43.5'N 44°42.5'N 44°41.5'N

North American 1983 Datum.  
9/22/2020 0103  
Acres from IR