

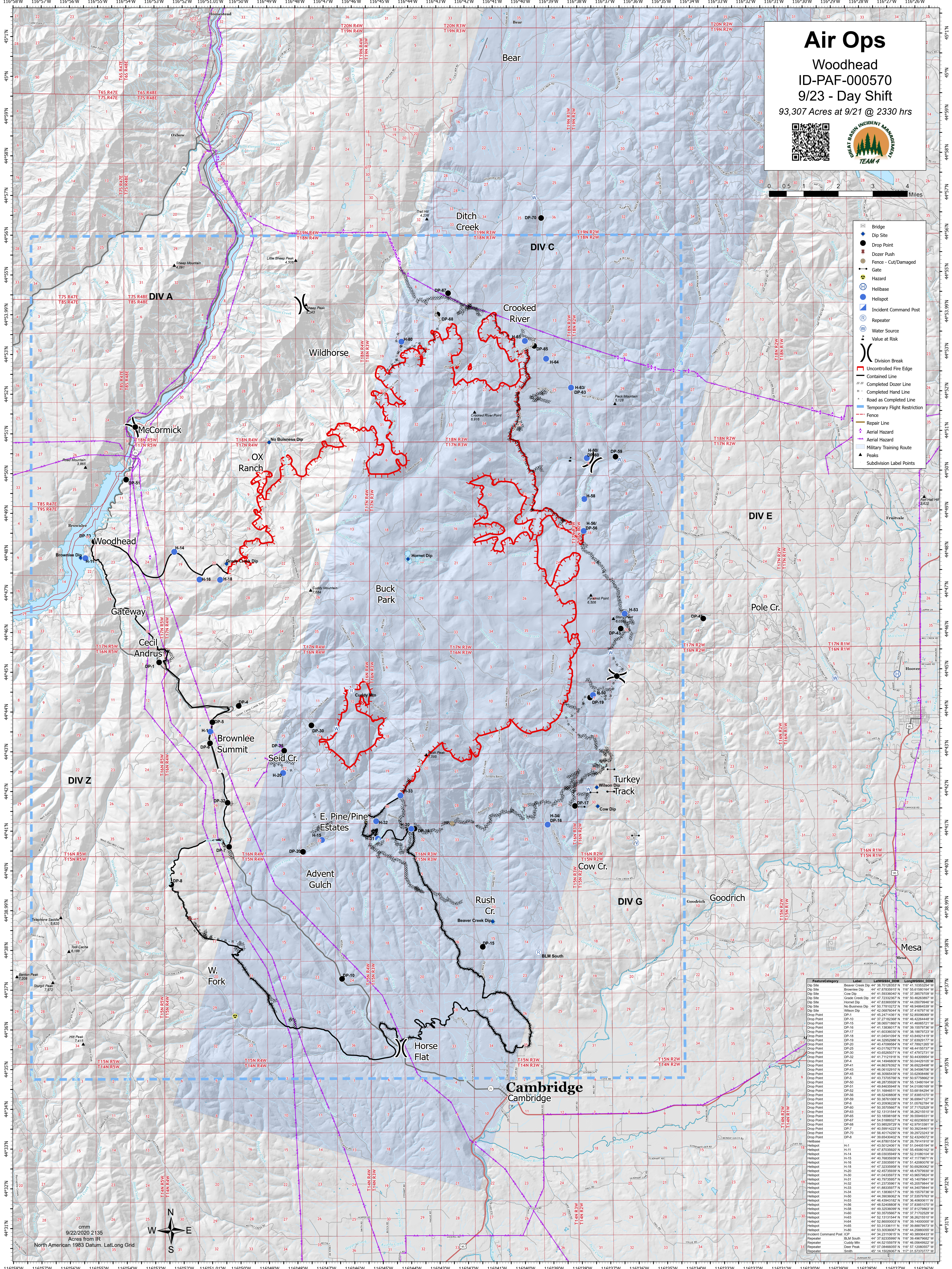
Air Ops

Woodhead

ID-PAF-000570

9/23 - Day Shift

93,307 Acres at 9/21 @ 2330 hrs



- Bridge
- Dip Site
- Drop Point
- Dozer Push
- Fence - Cut/Damaged
- Gate
- Hazard
- Helibase
- Helispot
- Incident Command Post
- Repeater
- Water Source
- Value at Risk
- Division Break
- Uncontrolled Fire Edge
- Contained Line
- Completed Dozer Line
- Completed Hand Line
- Road as Completed Line
- Temporary Flight Restriction
- Fence
- Repair Line
- Aerial Hazard
- Military Training Route
- Subdivision Label Points

Feature/Category	Label	Lat/Long (NAD 83)	Lat/Long (WGS 84)
Dip Site	Beaver Creek Dip	44° 38' 27.128352" N	116° 41' 53.05254" W
Dip Site	Brownlee Dip	44° 42' 27.823287" N	116° 55' 19.91948" W
Dip Site	Cow Dip	44° 41' 59.930647" N	116° 37' 38.879709" W
Dip Site	Crane Creek Dip	44° 41' 22.823287" N	116° 50' 40.820897" W
Dip Site	Hornet Dip	44° 47' 53.893952" N	116° 44' 05.079494" W
Dip Site	No Business Dip	44° 50' 77.02722" N	116° 48' 34.846337" W
Dip Site	Wilson Dip	44° 42' 27.823287" N	116° 37' 38.879709" W
Drop Point	DP-1	44° 45' 24.714311" N	116° 52' 85.006697" W
Drop Point	DP-10	44° 41' 27.823287" N	116° 46' 22.84448" W
Drop Point	DP-15	44° 38' 08.718657" N	116° 41' 46.067271" W
Drop Point	DP-16	44° 41' 13.820377" N	116° 38' 52.879181" W
Drop Point	DP-17	44° 41' 00.336037" N	116° 38' 18.87722" W
Drop Point	DP-18	44° 41' 04.54104" N	116° 43' 44.624119" W
Drop Point	DP-19	44° 41' 32.823287" N	116° 37' 38.879709" W
Drop Point	DP-20	44° 40' 47.098587" N	116° 47' 78.621269" W
Drop Point	DP-25	44° 41' 03.107277" N	116° 48' 44.105137" W
Drop Point	DP-30	44° 43' 52.823287" N	116° 47' 47.972731" W
Drop Point	DP-32	44° 41' 11.12191" N	116° 50' 40.820897" W
Drop Point	DP-33	44° 41' 13.820377" N	116° 38' 52.879181" W
Drop Point	DP-4	44° 44' 14.448807" N	116° 50' 04.429107" W
Drop Point	DP-41	44° 46' 36.76392" N	116° 36' 49.224498" W
Drop Point	DP-43	44° 41' 27.823287" N	116° 37' 38.879709" W
Drop Point	DP-45	44° 41' 27.823287" N	116° 37' 38.879709" W
Drop Point	DP-50	44° 48' 28.735928" N	116° 55' 13.48164" W
Drop Point	DP-51	44° 48' 44.843948" N	116° 54' 01.08168" W
Drop Point	DP-52	44° 41' 13.820377" N	116° 38' 52.879181" W
Drop Point	DP-56	44° 48' 52.408807" N	116° 37' 38.879709" W
Drop Point	DP-59	44° 41' 32.823287" N	116° 37' 38.879709" W
Drop Point	DP-6	44° 43' 20.820377" N	116° 51' 05.762784" W
Drop Point	DP-63	44° 52' 13.11544" N	116° 38' 26.155107" W
Drop Point	DP-65	44° 52' 18.81818" N	116° 39' 50.443331" W
Drop Point	DP-67	44° 41' 03.107277" N	116° 38' 52.879181" W
Drop Point	DP-68	44° 53' 38.820377" N	116° 42' 57.913381" W
Drop Point	DP-70	44° 50' 59.930647" N	116° 50' 32.820897" W
Drop Point	DP-75	44° 50' 40.17429" N	116° 39' 28.723247" W
Drop Point	DP-8	44° 48' 44.843948" N	116° 52' 43.45072" W
Drop Point	DP-9	44° 48' 44.843948" N	116° 52' 43.45072" W
Helispot	H-1	44° 43' 50.724011" N	116° 51' 04.40194" W
Helispot	H-10	44° 41' 13.820377" N	116° 38' 52.879181" W
Helispot	H-14	44° 40' 02.035887" N	116° 52' 31.08104" W
Helispot	H-15	44° 40' 78.820377" N	116° 44' 17.774811" W
Helispot	H-16	44° 47' 33.335951" N	116° 51' 42.080707" W
Helispot	H-18	44° 47' 32.335951" N	116° 50' 40.820897" W
Helispot	H-20	44° 41' 13.820377" N	116° 46' 22.84448" W
Helispot	H-30	44° 41' 04.54104" N	116° 43' 44.624119" W
Helispot	H-31	44° 41' 79.930647" N	116° 48' 44.105137" W
Helispot	H-32	44° 41' 23.735951" N	116° 45' 20.78484" W
Helispot	H-33	44° 41' 32.823287" N	116° 38' 52.879181" W
Helispot	H-34	44° 41' 13.820377" N	116° 38' 15.07379" W
Helispot	H-50	44° 44' 39.03602" N	116° 37' 53.07763" W
Helispot	H-53	44° 41' 43.413381" N	116° 36' 49.224498" W
Helispot	H-56	44° 48' 52.408807" N	116° 37' 38.879709" W
Helispot	H-58	44° 48' 35.705667" N	116° 37' 31.702529" W
Helispot	H-59	44° 48' 35.705667" N	116° 37' 31.702529" W
Helispot	H-63	44° 42' 13.11544" N	116° 38' 26.155107" W
Helispot	H-64	44° 41' 13.820377" N	116° 38' 52.879181" W
Helispot	H-65	44° 53' 13.11544" N	116° 39' 50.443331" W
Helispot	H-80	44° 41' 32.823287" N	116° 38' 52.879181" W
Incident Command Post	ICP	44° 34' 21.08104" N	116° 40' 38.86433" W
Repeater	BLM South	44° 41' 32.823287" N	116° 38' 52.879181" W
Repeater	Deer Peak	44° 42' 18.81818" N	116° 46' 06.64433" W
Repeater	Wilson	44° 41' 59.930647" N	116° 37' 38.879709" W
Repeater	Wilson	44° 41' 59.930647" N	116° 37' 38.879709" W
Subdivision Label Points	Seid Cr.	44° 41' 13.820377" N	116° 38' 52.879181" W
Subdivision Label Points	Seid Cr.	44° 41' 13.820377" N	116° 38' 52.879181" W

9/22/2020 2135
Acres from IR
North American 1983 Datum. Lat/Long Grid

