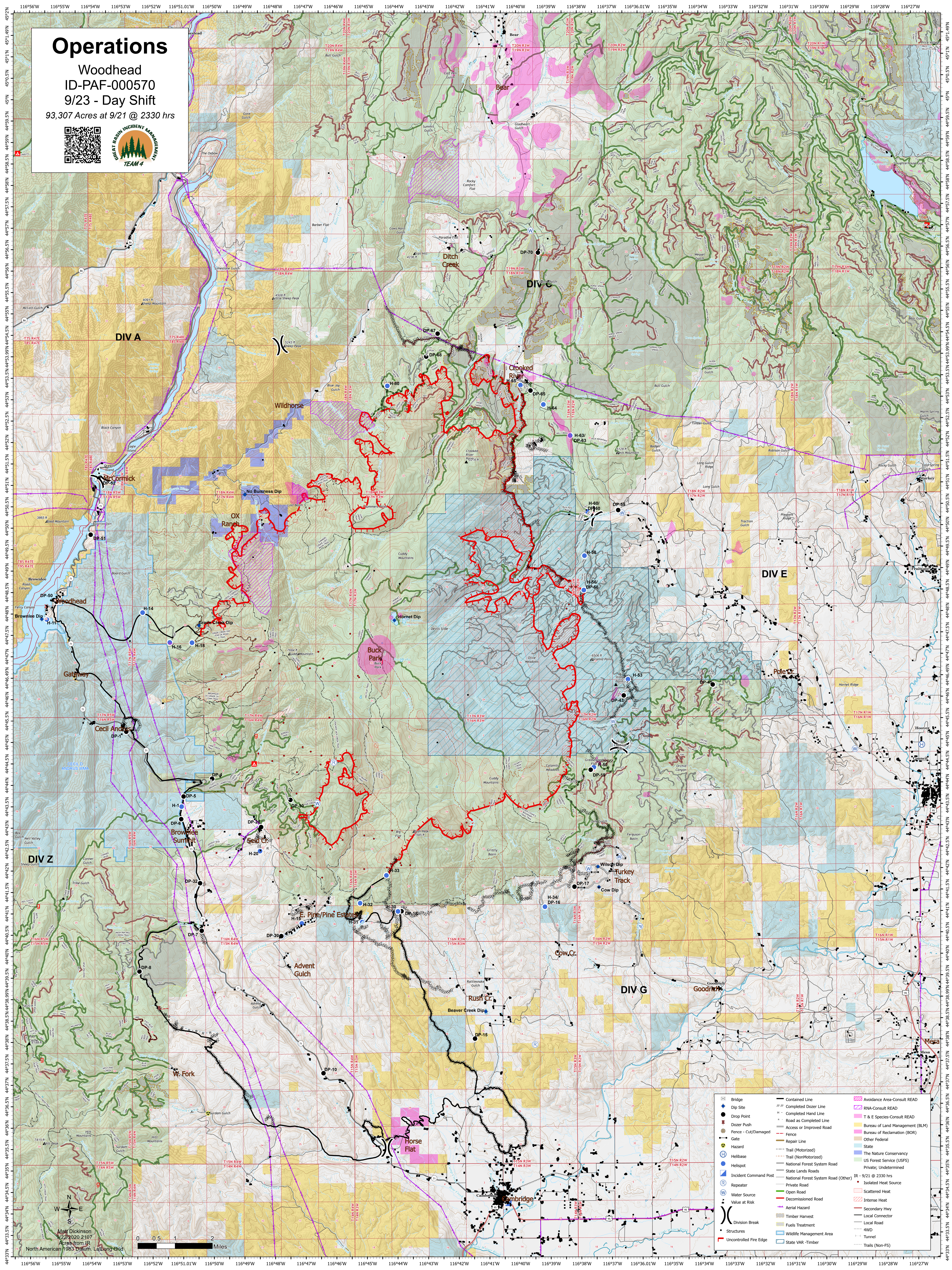


# Operations

Woodhead  
ID-PAF-000570  
9/23 - Day Shift  
93,307 Acres at 9/21 @ 2330 hrs



	Bridge		Contained Line		Avoidance Area-Consult READ
	Dip Site		Completed Dozer Line		RNA-Consult READ
	Drop Point		Completed Hand Line		T & E Species-Consult READ
	Dozer Push		Road as Completed Road		Bureau of Land Management (BLM)
	Fence - Cut/Damaged		Access or Improved Road		Bureau of Reclamation (BOR)
	Gate		Fence		Other Federal
	Hazard		Repair Line		State
	Heliport		Trail (Motorized)		The Nature Conservancy
	Incident Command Post		Trail (Non-Motorized)		US Forest Service (USFS) Private; Undetermined
	Repeater		National Forest System Road		IR - 9/21 @ 2330 hrs
	Water Source		State Lands Roads		Isolated Heat Source
	Value at Risk		National Forest System Road (Other)		Scattered Heat
	Division Break		Private Road		Intense Heat
	Structures		Open Road		Secondary Hwy
	Uncontrolled Fire Edge		Decommissioned Road		Local Connector
			Aerial Hazard		4WD
			Timber Harvest		Tunnel
			Fuels Treatment		Trails (Non-FS)
			Wildlife Management Area		
			State VAR - Timber		

Matt Dickinson  
9/22/2020 2107  
Acres from JR  
North American # 983 Datum - Lattlong Grid

