

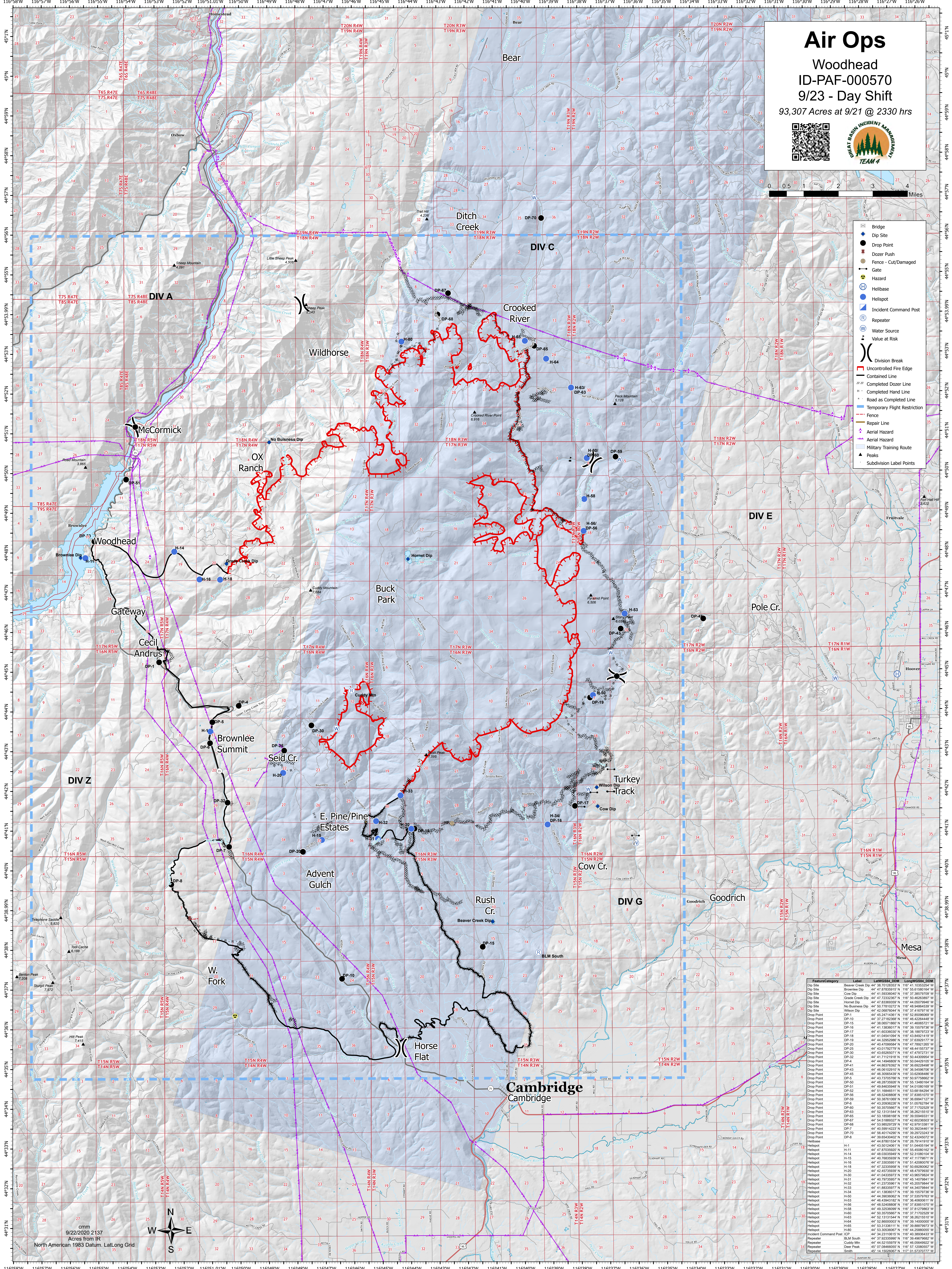
Air Ops

Woodhead

ID-PAF-000570

9/23 - Day Shift

93,307 Acres at 9/21 @ 2330 hrs



- Bridge
- Dip Site
- Drop Point
- Dozer Push
- Fence - Cut/Damaged
- Gate
- Hazard
- Helispot
- Incident Command Post
- Repeater
- Water Source
- Value at Risk
- Division Break
- Uncontrolled Fire Edge
- Contained Line
- Completed Dozer Line
- Completed Hand Line
- Road as Completed Line
- Temporary Flight Restriction
- Fence
- Repair Line
- Aerial Hazard
- Military Training Route
- Peaks
- Subdivision Label Points

Feature/Category	Label	LatWGS84_DTM	LongWGS84_DTM
Dip Site	Beaver Creek Dip	44° 38' 27.8353" N	116° 41' 03.5524" W
Dip Site	Brownlee Dip	44° 42' 27.8353" N	116° 55' 19.9146" W
Dip Site	Cow Dip	44° 41' 59.9360" N	116° 37' 38.5797" W
Dip Site	Grade Creek Dip	44° 42' 22.9227" N	116° 50' 40.9287" W
Dip Site	Hornet Dip	44° 47' 53.9392" N	116° 44' 05.0794" W
Dip Site	No Business Dip	44° 40' 27.7022" N	116° 49' 48.8432" W
Dip Site	Wilson Dip	44° 42' 27.8353" N	116° 37' 38.5797" W
Drop Point	DP-1	44° 44' 24.1481" N	116° 52' 05.9069" W
Drop Point	DP-10	44° 42' 27.8353" N	116° 46' 22.9446" W
Drop Point	DP-15	44° 38' 00.5718" N	116° 41' 46.0627" W
Drop Point	DP-16	44° 41' 13.9307" N	116° 39' 52.9738" W
Drop Point	DP-17	44° 41' 00.3302" N	116° 38' 18.8722" W
Drop Point	DP-18	44° 41' 04.5410" N	116° 43' 44.0214" W
Drop Point	DP-19	44° 42' 32.9227" N	116° 37' 40.9287" W
Drop Point	DP-20	44° 40' 47.9954" N	116° 47' 7.8212" W
Drop Point	DP-25	44° 42' 27.8353" N	116° 46' 22.9446" W
Drop Point	DP-30	44° 43' 52.9227" N	116° 47' 47.9727" W
Drop Point	DP-32	44° 42' 27.8353" N	116° 50' 40.9287" W
Drop Point	DP-4	44° 44' 14.4919" N	116° 50' 04.4919" W
Drop Point	DP-41	44° 46' 36.5437" N	116° 33' 02.9486" W
Drop Point	DP-43	44° 42' 27.8353" N	116° 50' 40.9287" W
Drop Point	DP-45	44° 46' 36.5437" N	116° 33' 02.9486" W
Drop Point	DP-50	44° 48' 28.7352" N	116° 55' 13.4814" W
Drop Point	DP-51	44° 48' 44.9349" N	116° 54' 01.0616" W
Drop Point	DP-52	44° 42' 27.8353" N	116° 50' 40.9287" W
Drop Point	DP-56	44° 46' 52.9227" N	116° 37' 40.9287" W
Drop Point	DP-59	44° 42' 27.8353" N	116° 50' 40.9287" W
Drop Point	DP-6	44° 42' 27.8353" N	116° 50' 40.9287" W
Drop Point	DP-63	44° 42' 13.1154" N	116° 38' 26.1515" W
Drop Point	DP-65	44° 42' 13.1154" N	116° 38' 26.1515" W
Drop Point	DP-67	44° 42' 27.8353" N	116° 50' 40.9287" W
Drop Point	DP-68	44° 42' 27.8353" N	116° 50' 40.9287" W
Drop Point	DP-70	44° 46' 40.1742" N	116° 39' 29.2242" W
Drop Point	DP-8	44° 46' 36.5437" N	116° 33' 02.9486" W
Drop Point	DP-9	44° 42' 27.8353" N	116° 50' 40.9287" W
Helispot	H-1	44° 42' 27.8353" N	116° 50' 40.9287" W
Helispot	H-10	44° 41' 04.5410" N	116° 43' 44.0214" W
Helispot	H-11	44° 42' 27.8353" N	116° 50' 40.9287" W
Helispot	H-14	44° 40' 02.9348" N	116° 52' 11.0614" W
Helispot	H-15	44° 42' 27.8353" N	116° 50' 40.9287" W
Helispot	H-16	44° 47' 33.9392" N	116° 51' 42.0807" W
Helispot	H-18	44° 42' 32.9227" N	116° 50' 40.9287" W
Helispot	H-20	44° 42' 27.8353" N	116° 50' 40.9287" W
Helispot	H-30	44° 41' 04.5410" N	116° 43' 44.0214" W
Helispot	H-32	44° 41' 04.5410" N	116° 43' 44.0214" W
Helispot	H-33	44° 41' 04.5410" N	116° 43' 44.0214" W
Helispot	H-34	44° 41' 04.5410" N	116° 43' 44.0214" W
Helispot	H-35	44° 41' 04.5410" N	116° 43' 44.0214" W
Helispot	H-36	44° 41' 04.5410" N	116° 43' 44.0214" W
Helispot	H-37	44° 41' 04.5410" N	116° 43' 44.0214" W
Helispot	H-38	44° 41' 04.5410" N	116° 43' 44.0214" W
Helispot	H-39	44° 41' 04.5410" N	116° 43' 44.0214" W
Helispot	H-40	44° 41' 04.5410" N	116° 43' 44.0214" W
Helispot	H-41	44° 41' 04.5410" N	116° 43' 44.0214" W
Helispot	H-42	44° 41' 04.5410" N	116° 43' 44.0214" W
Helispot	H-43	44° 41' 04.5410" N	116° 43' 44.0214" W
Helispot	H-44	44° 41' 04.5410" N	116° 43' 44.0214" W
Helispot	H-45	44° 41' 04.5410" N	116° 43' 44.0214" W
Helispot	H-46	44° 41' 04.5410" N	116° 43' 44.0214" W
Helispot	H-47	44° 41' 04.5410" N	116° 43' 44.0214" W
Helispot	H-48	44° 41' 04.5410" N	116° 43' 44.0214" W
Helispot	H-49	44° 41' 04.5410" N	116° 43' 44.0214" W
Helispot	H-50	44° 41' 04.5410" N	116° 43' 44.0214" W
Helispot	H-51	44° 41' 04.5410" N	116° 43' 44.0214" W
Helispot	H-52	44° 41' 04.5410" N	116° 43' 44.0214" W
Helispot	H-53	44° 41' 04.5410" N	116° 43' 44.0214" W
Helispot	H-54	44° 41' 04.5410" N	116° 43' 44.0214" W
Helispot	H-55	44° 41' 04.5410" N	116° 43' 44.0214" W
Helispot	H-56	44° 41' 04.5410" N	116° 43' 44.0214" W
Helispot	H-57	44° 41' 04.5410" N	116° 43' 44.0214" W
Helispot	H-58	44° 41' 04.5410" N	116° 43' 44.0214" W
Helispot	H-59	44° 41' 04.5410" N	116° 43' 44.0214" W
Helispot	H-60	44° 41' 04.5410" N	116° 43' 44.0214" W
Helispot	H-61	44° 41' 04.5410" N	116° 43' 44.0214" W
Helispot	H-62	44° 41' 04.5410" N	116° 43' 44.0214" W
Helispot	H-63	44° 41' 04.5410" N	116° 43' 44.0214" W
Helispot	H-64	44° 41' 04.5410" N	116° 43' 44.0214" W
Helispot	H-65	44° 41' 04.5410" N	116° 43' 44.0214" W
Helispot	H-66	44° 41' 04.5410" N	116° 43' 44.0214" W
Helispot	H-67	44° 41' 04.5410" N	116° 43' 44.0214" W
Helispot	H-68	44° 41' 04.5410" N	116° 43' 44.0214" W
Helispot	H-69	44° 41' 04.5410" N	116° 43' 44.0214" W
Helispot	H-70	44° 41' 04.5410" N	116° 43' 44.0214" W
Incident Command Post	ICP	44° 42' 27.8353" N	116° 40' 38.0643" W
Repeater	BLM South	44° 42' 27.8353" N	116° 39' 46.9682" W
Repeater	Cuddy Mtn	44° 42' 27.8353" N	116° 46' 04.6402" W
Repeater	Dear Peak	44° 42' 27.8353" N	116° 42' 27.8353" W
Repeater	Seid Cr.	44° 42' 27.8353" N	116° 42' 27.8353" W

9/22/2020 2137
 Acres from IR
 North American 1983 Datum. Lat/Long Grid