

# Operations

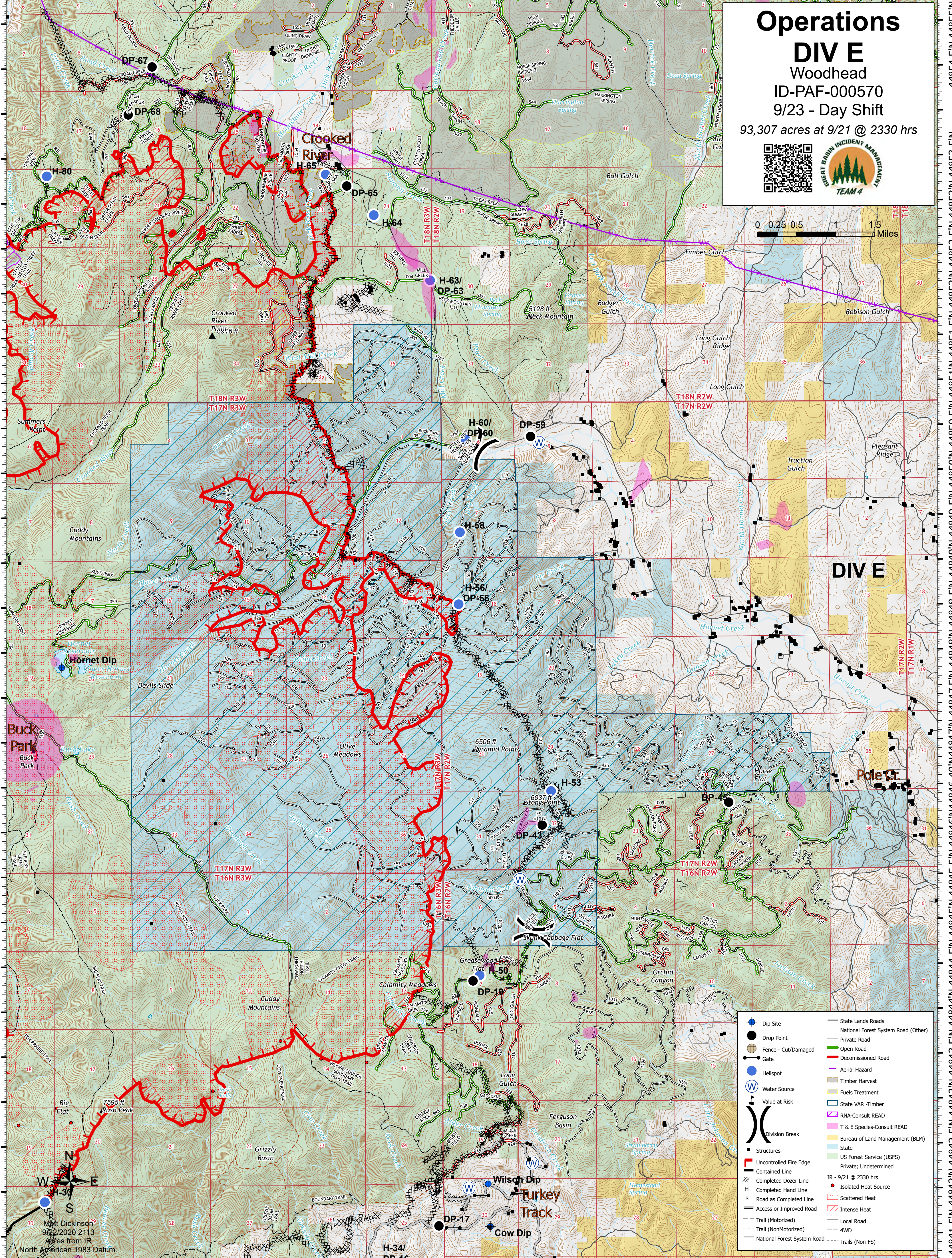
## DIV E

### Woodhead

#### ID-PAF-000570

#### 9/23 - Day Shift

93,307 acres at 9/21 @ 2330 hrs



|  |                             |  |                                     |
|--|-----------------------------|--|-------------------------------------|
|  | Dip Site                    |  | State Lands Roads                   |
|  | Drop Point                  |  | National Forest System Road (Other) |
|  | Fence - Cut/Damaged         |  | Private Road                        |
|  | Gate                        |  | Open Road                           |
|  | Helispot                    |  | Decommissioned Road                 |
|  | Water Source                |  | Aerial Hazard                       |
|  | Value at Risk               |  | Timber Harvest                      |
|  | Division Break              |  | Fuels Treatment                     |
|  | Structures                  |  | State VAR - Timber                  |
|  | Uncontrolled Fire Edge      |  | RNA-Consult READ                    |
|  | Contained Line              |  | T & E Species-Consult READ          |
|  | Completed Dozer Line        |  | Bureau of Land Management (BLM)     |
|  | Completed Hand Line         |  | State                               |
|  | Road as Completed Line      |  | US Forest Service (USFS)            |
|  | Access or Improved Road     |  | Private; Undetermined               |
|  | Trail (Motorized)           |  | IR - 9/21 @ 2330 hrs                |
|  | Trail (NonMotorized)        |  | Isolated Heat Source                |
|  | National Forest System Road |  | Scattered Heat                      |
|  |                             |  | Intense Heat                        |
|  |                             |  | Local Road                          |
|  |                             |  | AWD                                 |
|  |                             |  | Trails (Non-FS)                     |