

Operations

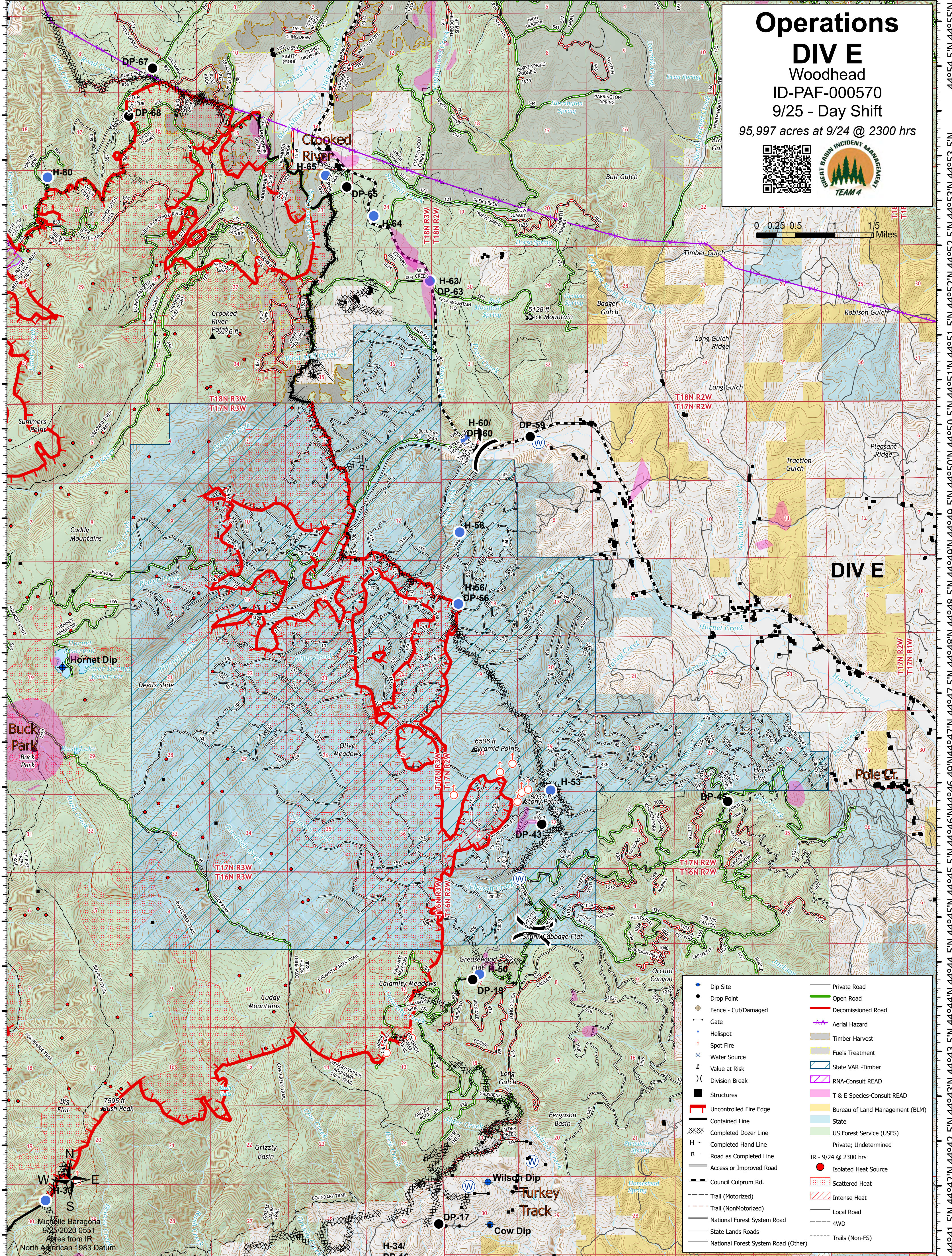
DIV E

Woodhead

ID-PAF-000570

9/25 - Day Shift

95,997 acres at 9/24 @ 2300 hrs



DIV E

Pole Cr.

	Dip Site		Private Road
	Drop Point		Open Road
	Fence - Cut/Damaged		Decommissioned Road
	Gate		Aerial Hazard
	Hellspot		Timber Harvest
	Spot Fire		Fuels Treatment
	Water Source		State VAR - Timber
	Value at Risk		RNA-Consult READ
	Division Break		T & E Species-Consult READ
	Structures		Bureau of Land Management (BLM)
	Uncontrolled Fire Edge		State
	Contained Line		US Forest Service (USFS)
	Completed Dozer Line		Private; Undetermined
	Completed Hand Line		IR - 9/24 @ 2300 hrs
	Road as Completed Line		Isolated Heat Source
	Access or Improved Road		Scattered Heat
	Council Culpm Rd.		Intense Heat
	Trail (Motorized)		Local Road
	Trail (NonMotorized)		4WD
	National Forest System Road		Trails (Non-FS)
	State Lands Roads		
	National Forest System Road (Other)		