

# Air Ops

## Woodhead

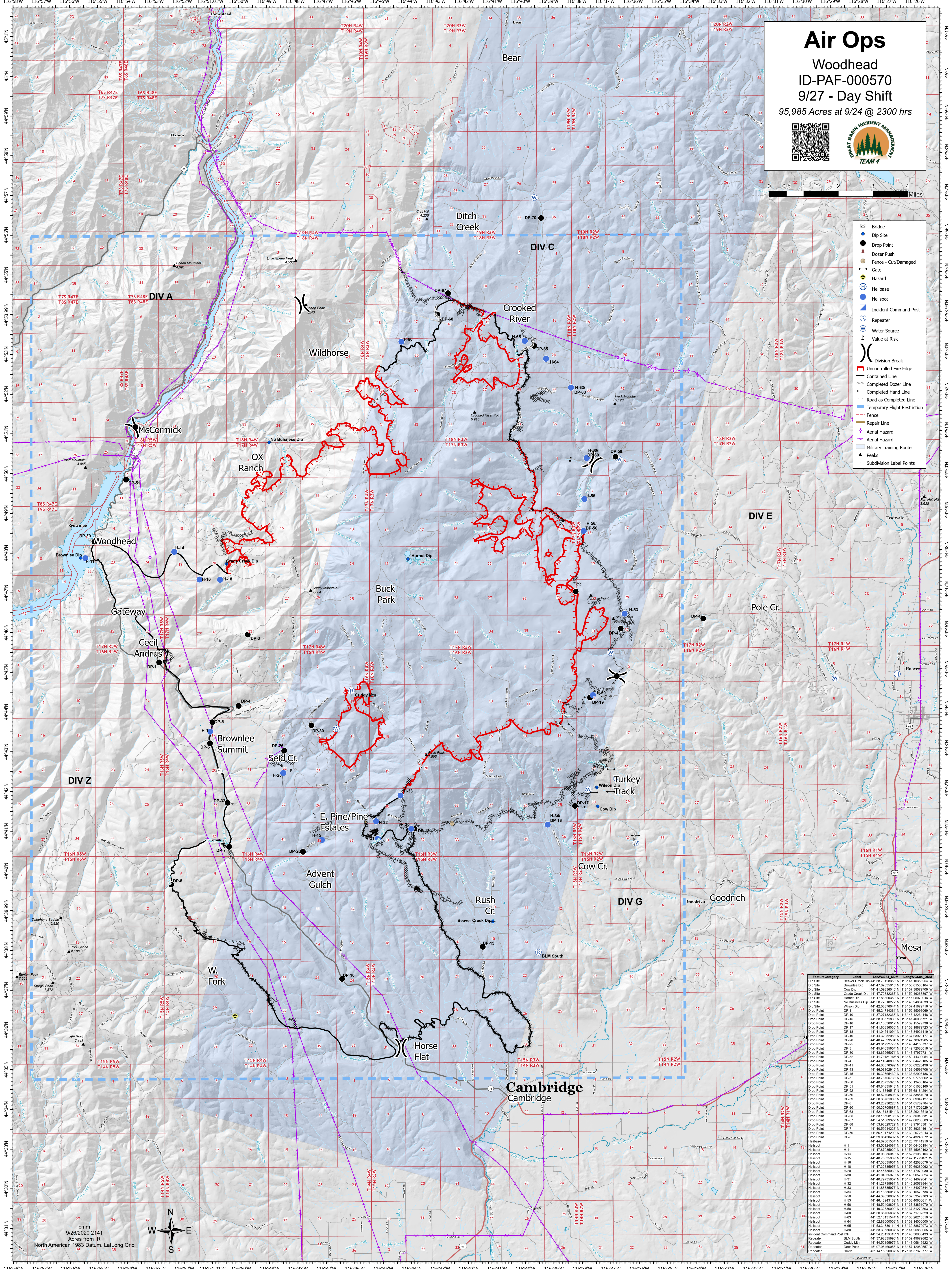
### ID-PAF-000570

#### 9/27 - Day Shift

95,985 Acres at 9/24 @ 2300 hrs



- Bridge
- Dip Site
- Drop Point
- Dozer Push
- Fence - Cut/Damaged
- Gate
- Hazard
- Helibase
- Helispot
- Incident Command Post
- Repeater
- Water Source
- Value at Risk
- Division Break
- Uncontrolled Fire Edge
- Contained Line
- Completed Dozer Line
- Completed Hand Line
- Road as Completed Line
- Temporary Flight Restriction
- Fence
- Repair Line
- Aerial Hazard
- Military Training Route
- Subdivision Label Points



Feature/Category	Label	Latitude	Longitude
Dip Site	Beaver Creek Dip	44° 38' 12.852" N	116° 41' 53.525" W
Dip Site	Brownlee Dip	44° 47' 87.83915" N	116° 55' 81.58164" W
Dip Site	Cow Dip	44° 41' 52.80404" N	116° 51' 37.78709" W
Dip Site	Grate Creek Dip	44° 47' 72.32367" N	116° 50' 46.26389" W
Dip Site	Hornet Dip	44° 41' 52.80404" N	116° 51' 37.78709" W
Dip Site	No Business Dip	44° 50' 77.81072" N	116° 48' 94.86459" W
Dip Site	Wilson Dip	44° 42' 08.87644" N	116° 51' 47.87176" W
Drop Point	DP-1	44° 48' 27.18288" N	116° 48' 42.28448" W
Drop Point	DP-15	44° 38' 05.71868" N	116° 41' 05.09652" W
Drop Point	DP-16	44° 41' 13.85017" N	116° 39' 15.97978" W
Drop Point	DP-17	44° 41' 02.02050" N	116° 38' 48.78179" W
Drop Point	DP-18	44° 41' 04.64109" N	116° 43' 84.92141" W
Drop Point	DP-19	44° 44' 32.95988" N	116° 37' 43.92977" W
Drop Point	DP-20	44° 45' 47.05029" N	116° 47' 87.83915" W
Drop Point	DP-25	44° 43' 01.76277" N	116° 48' 41.15737" W
Drop Point	DP-3	44° 48' 48.04059" N	116° 48' 42.28448" W
Drop Point	DP-30	44° 43' 45.26671" N	116° 47' 47.97271" W
Drop Point	DP-32	44° 41' 11.19119" N	116° 50' 46.26389" W
Drop Point	DP-4	44° 48' 42.28448" N	116° 50' 46.26389" W
Drop Point	DP-41	44° 48' 36.76392" N	116° 38' 82.29488" W
Drop Point	DP-43	44° 48' 18.85999" N	116° 38' 48.78179" W
Drop Point	DP-45	44° 48' 35.56439" N	116° 38' 82.29488" W
Drop Point	DP-50	44° 48' 28.75928" N	116° 55' 13.48016" W
Drop Point	DP-51	44° 48' 48.86048" N	116° 54' 02.80189" W
Drop Point	DP-52	44° 48' 03.59848" N	116° 51' 47.87176" W
Drop Point	DP-56	44° 48' 52.40808" N	116° 37' 83.85171" W
Drop Point	DP-59	44° 48' 38.58979" N	116° 41' 05.09652" W
Drop Point	DP-6	44° 43' 20.98267" N	116° 51' 02.76278" W
Drop Point	DP-63	44° 52' 13.15154" N	116° 38' 26.15511" W
Drop Point	DP-65	44° 53' 15.98168" N	116° 39' 59.46531" W
Drop Point	DP-67	44° 51' 51.82979" N	116° 42' 87.91381" W
Drop Point	DP-68	44° 51' 58.92297" N	116° 42' 87.91381" W
Drop Point	DP-70	44° 58' 45.17498" N	116° 38' 28.72343" W
Drop Point	DP-8	44° 48' 48.86048" N	116° 52' 42.04972" W
Drop Point	DP-9	44° 48' 48.86048" N	116° 52' 42.04972" W
Helispot	H-1	44° 43' 01.76277" N	116° 51' 04.00018" W
Helispot	H-14	44° 48' 03.59848" N	116° 52' 31.08014" W
Helispot	H-15	44° 48' 18.85999" N	116° 41' 05.09652" W
Helispot	H-16	44° 47' 33.35951" N	116° 51' 42.08076" W
Helispot	H-18	44° 47' 33.35951" N	116° 50' 82.89262" W
Helispot	H-20	44° 45' 47.05029" N	116° 48' 77.92922" W
Helispot	H-30	44° 41' 03.59848" N	116° 43' 84.92141" W
Helispot	H-32	44° 41' 23.71581" N	116° 45' 48.78179" W
Helispot	H-33	44° 41' 03.59848" N	116° 43' 84.92141" W
Helispot	H-34	44° 41' 13.85017" N	116° 39' 15.97978" W
Helispot	H-50	44° 48' 39.03682" N	116° 37' 53.79173" W
Helispot	H-52	44° 48' 32.95988" N	116° 37' 77.92922" W
Helispot	H-56	44° 48' 52.40808" N	116° 37' 83.85171" W
Helispot	H-58	44° 48' 32.95988" N	116° 37' 77.92922" W
Helispot	H-60	44° 50' 35.70567" N	116° 37' 71.70252" W
Helispot	H-63	44° 52' 13.15154" N	116° 38' 26.15511" W
Helispot	H-64	44° 53' 13.81111" N	116° 38' 89.79717" W
Helispot	H-65	44° 53' 30.35979" N	116° 38' 48.78179" W
Incident Command Post	ICP	44° 54' 23.10181" N	116° 40' 38.36433" W
Repeater	BLM South	44° 51' 51.82979" N	116° 38' 48.78179" W
Repeater	Cuddy Mtn	44° 48' 52.40808" N	116° 38' 48.78179" W
Repeater	Deer Peak	44° 07' 58.46652" N	116° 57' 12.88257" W
Repeater	Smith	44° 14' 15.00067" N	117° 01' 52.70177" W

cm  
9/26/2020 2141  
Acres from IR  
North American 1983 Datum, LaloLong Grid