

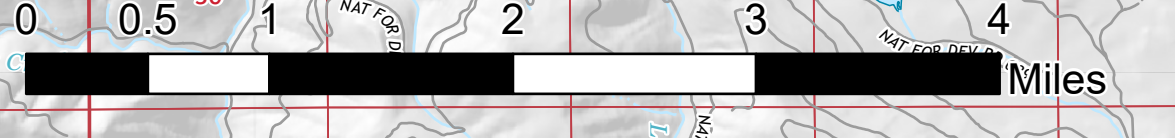
Air Ops

Woodhead

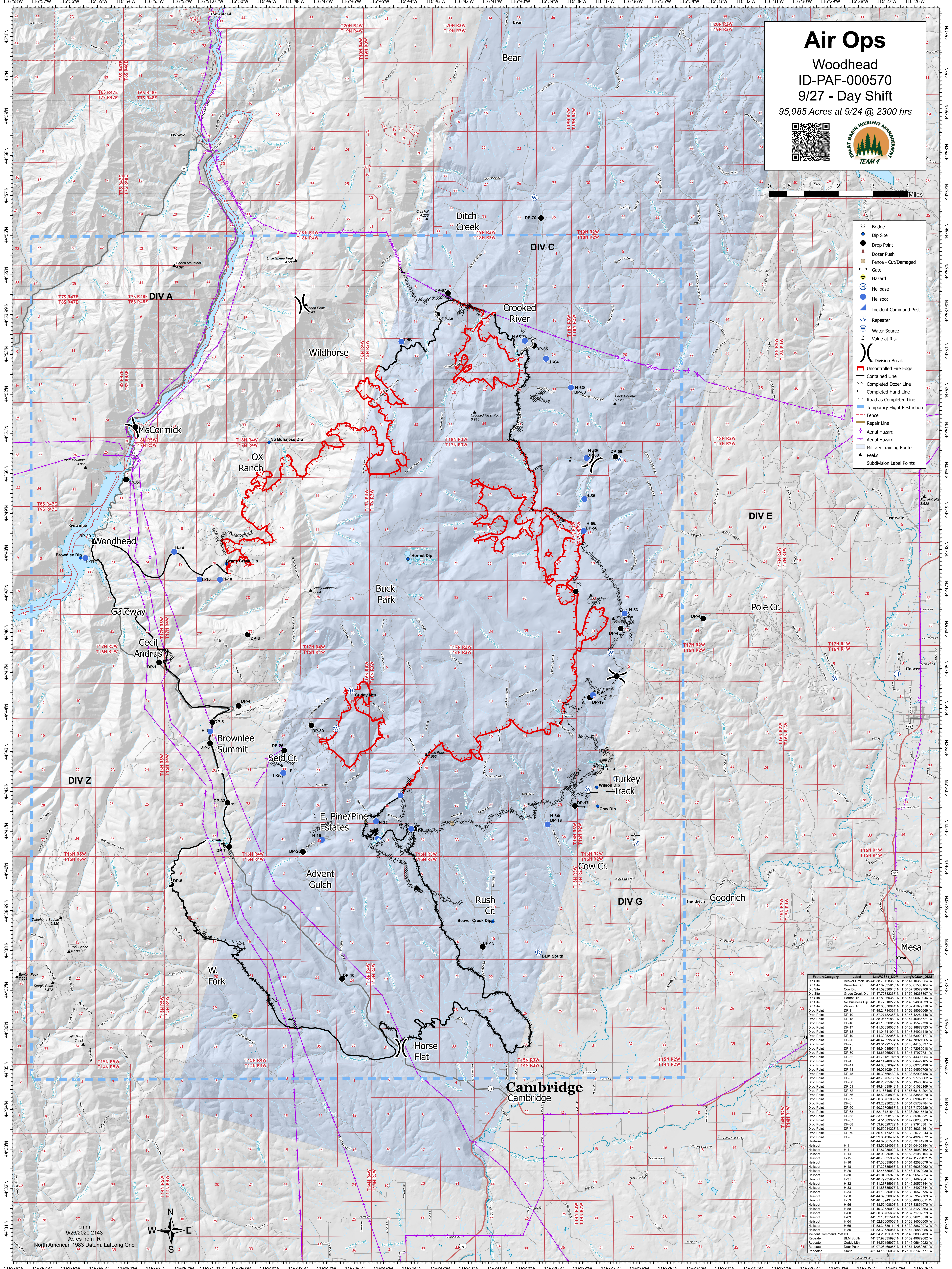
ID-PAF-000570

9/27 - Day Shift

95,985 Acres at 9/24 @ 2300 hrs



- Bridge
- Dip Site
- Drop Point
- Dozer Push
- Fence - Cut/Damaged
- Gate
- Hazard
- Helibase
- Incident Command Post
- Repeater
- Water Source
- Value at Risk
- Division Break
- Uncontrolled Fire Edge
- Contained Line
- Completed Dozer Line
- Completed Hand Line
- Road as Completed Line
- Temporary Flight Restriction
- Fence
- Repair Line
- Aerial Hazard
- Military Training Route
- Peaks
- Subdivision Label Points



Feature/Category	Label	Latitude	Longitude
Dip Site	Beaver Creek Dip	44° 38' 00.000" N	116° 33' 25.4" W
Dip Site	Brownlee Dip	44° 47' 87.85915" N	116° 55' 81.88164" W
Dip Site	Cow Dip	44° 41' 52.60329" N	116° 37' 37.787" W
Dip Site	Gracie Creek Dip	44° 47' 72.32387" N	116° 50' 46.26387" W
Dip Site	Hornet Dip	44° 41' 52.60329" N	116° 41' 20.79748" W
Dip Site	No Business Dip	44° 50' 77.81027" N	116° 48' 94.86433" W
Dip Site	Wilson Dip	44° 42' 08.95044" N	116° 37' 41.9717" W
Dip Site	Wilson Dip	44° 42' 08.95044" N	116° 37' 41.9717" W
Drop Point	DP-1	44° 41' 52.60329" N	116° 48' 42.84448" W
Drop Point	DP-15	44° 38' 06.51186" N	116° 41' 46.05571" W
Drop Point	DP-16	44° 41' 13.81017" N	116° 39' 15.9737" W
Drop Point	DP-17	44° 41' 40.20359" N	116° 38' 18.9781" W
Drop Point	DP-18	44° 41' 04.54109" N	116° 43' 84.92141" W
Drop Point	DP-19	44° 42' 32.9298" N	116° 37' 41.9717" W
Drop Point	DP-20	44° 41' 47.01622" N	116° 47' 79.2178" W
Drop Point	DP-25	44° 43' 01.79277" N	116° 48' 41.15731" W
Drop Point	DP-3	44° 41' 52.60329" N	116° 41' 20.79748" W
Drop Point	DP-30	44° 43' 65.26071" N	116° 47' 47.97273" W
Drop Point	DP-32	44° 41' 52.60329" N	116° 41' 20.79748" W
Drop Point	DP-4	44° 41' 44.44489" N	116° 50' 04.42915" W
Drop Point	DP-41	44° 48' 36.76392" N	116° 38' 62.2948" W
Drop Point	DP-43	44° 41' 52.60329" N	116° 38' 40.9951" W
Drop Point	DP-44	44° 48' 36.76392" N	116° 38' 62.2948" W
Drop Point	DP-45	44° 48' 36.76392" N	116° 38' 62.2948" W
Drop Point	DP-46	44° 41' 52.60329" N	116° 38' 40.9951" W
Drop Point	DP-47	44° 41' 52.60329" N	116° 38' 40.9951" W
Drop Point	DP-48	44° 41' 52.60329" N	116° 38' 40.9951" W
Drop Point	DP-49	44° 41' 52.60329" N	116° 38' 40.9951" W
Drop Point	DP-50	44° 48' 28.75928" N	116° 55' 13.84014" W
Drop Point	DP-51	44° 48' 84.63948" N	116° 54' 01.88164" W
Drop Point	DP-52	44° 51' 16.6441" N	116° 51' 46.9924" W
Drop Point	DP-56	44° 48' 52.40888" N	116° 37' 83.8517" W
Drop Point	DP-59	44° 41' 52.60329" N	116° 41' 20.79748" W
Drop Point	DP-6	44° 43' 20.92681" N	116° 51' 05.76274" W
Drop Point	DP-63	44° 52' 13.13154" N	116° 38' 26.1551" W
Drop Point	DP-65	44° 53' 18.98168" N	116° 39' 50.49531" W
Drop Point	DP-67	44° 41' 52.60329" N	116° 41' 20.79748" W
Drop Point	DP-68	44° 53' 05.2927" N	116° 42' 87.91381" W
Drop Point	DP-70	44° 58' 01.7429" N	116° 39' 28.72343" W
Drop Point	DP-8	44° 38' 06.51186" N	116° 37' 41.9717" W
Drop Point	DP-9	44° 41' 52.60329" N	116° 41' 20.79748" W
Helibase	H-1	44° 43' 01.79277" N	116° 51' 04.42915" W
Helibase	H-14	44° 48' 03.5584" N	116° 52' 31.08104" W
Helibase	H-15	44° 41' 52.60329" N	116° 41' 20.79748" W
Helibase	H-16	44° 47' 33.03561" N	116° 51' 42.08076" W
Helibase	H-18	44° 47' 33.03561" N	116° 51' 42.08076" W
Helibase	H-20	44° 42' 32.9298" N	116° 50' 04.42915" W
Helibase	H-29	44° 42' 47.39369" N	116° 48' 79.9217" W
Helibase	H-30	44° 41' 52.60329" N	116° 41' 20.79748" W
Helibase	H-32	44° 41' 52.60329" N	116° 41' 20.79748" W
Helibase	H-33	44° 41' 52.60329" N	116° 41' 20.79748" W
Helibase	H-34	44° 41' 52.60329" N	116° 41' 20.79748" W
Helibase	H-35	44° 41' 52.60329" N	116° 41' 20.79748" W
Helibase	H-50	44° 48' 36.76392" N	116° 38' 62.2948" W
Helibase	H-53	44° 48' 36.76392" N	116° 38' 62.2948" W
Helibase	H-56	44° 48' 52.40888" N	116° 37' 83.8517" W
Helibase	H-58	44° 41' 52.60329" N	116° 41' 20.79748" W
Helibase	H-59	44° 50' 37.05667" N	116° 37' 71.02529" W
Helibase	H-63	44° 52' 13.13154" N	116° 38' 26.1551" W
Helibase	H-64	44° 52' 13.13154" N	116° 38' 26.1551" W
Helibase	H-65	44° 53' 13.18111" N	116° 38' 88.79713" W
Helibase	H-66	44° 53' 30.30597" N	116° 38' 40.9951" W
Helibase	H-69	44° 53' 30.30597" N	116° 38' 40.9951" W
Incident Command Post	ICP	44° 34' 21.1081" N	116° 40' 30.36433" W
Repeater	BLM South	44° 41' 52.60329" N	116° 38' 40.9951" W
Repeater	Cuddy Mtn	44° 48' 52.40888" N	116° 37' 83.8517" W
Repeater	Deer Peak	44° 07' 58.46652" N	116° 57' 12.08257" W
Repeater	Smith	44° 14' 15.50687" N	117° 02' 52.70777" W

cm
9/26/2020 2143
Acres from IR
North American 1983 Datum. LatLong Grid