

# Repeater Coverage

Woodhead  
ID-PAF-000570  
9/27 - Day Shift

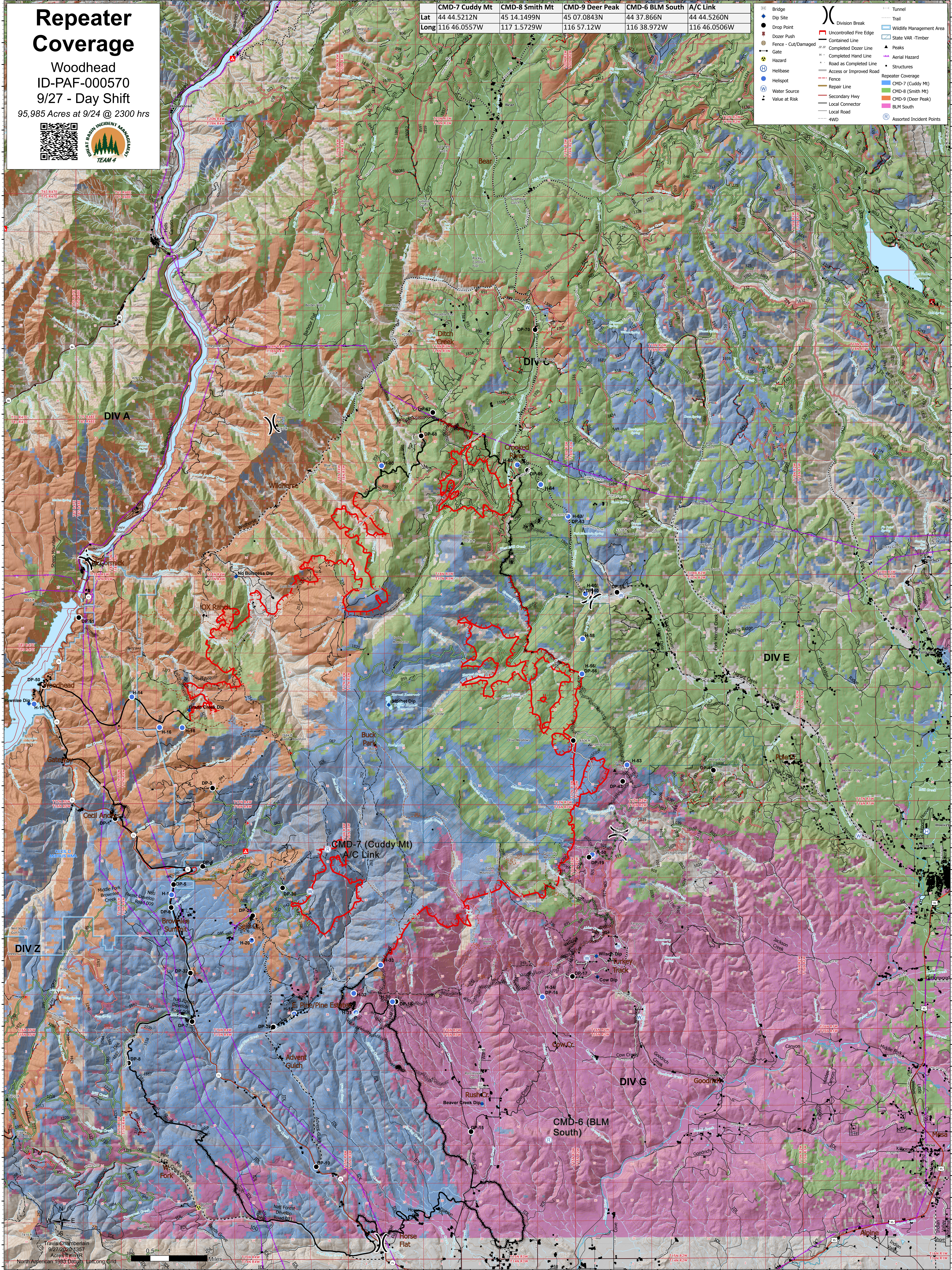
95,985 Acres at 9/24 @ 2300 hrs



	CMD-7 Cuddy Mt	CMD-8 Smith Mt	CMD-9 Deer Peak	CMD-6 BLM South	A/C Link
Lat	44 44.5212N	45 14.1499N	45 07.0843N	44 37.866N	44 44.5260N
Long	116 46.057W	117 1.5729W	116 57.12W	116 38.972W	116 46.0506W

Legend symbols and colors for map features:

- Bridge
- Dip Site
- Drop Point
- Fence - Cut/Damaged
- Gate
- Hazard
- Helibase
- Helispot
- Water Source
- Value at Risk
- Uncontrolled Fire Edge
- Contained Line
- Completed Dozer Line
- Completed Hand Line
- Road as Completed Line
- Access or Improved Road
- Fence
- Repair Line
- Secondary Hwy
- Local Connector
- Local Road
- 4WD
- Division Break
- Trail
- Wildlife Management Area
- State VAR - Timber
- Peaks
- Aerial Hazard
- Structures
- Repeater Coverage
- CMD-7 (Cuddy Mt)
- CMD-8 (Smith Mt)
- CMD-9 (Deer Peak)
- BLM South
- Assorted Incident Points
- Tunnel



Travis Chamberlain  
9/27/2020 1357  
Acres from  
North American 1983 Datum Lat/Long End