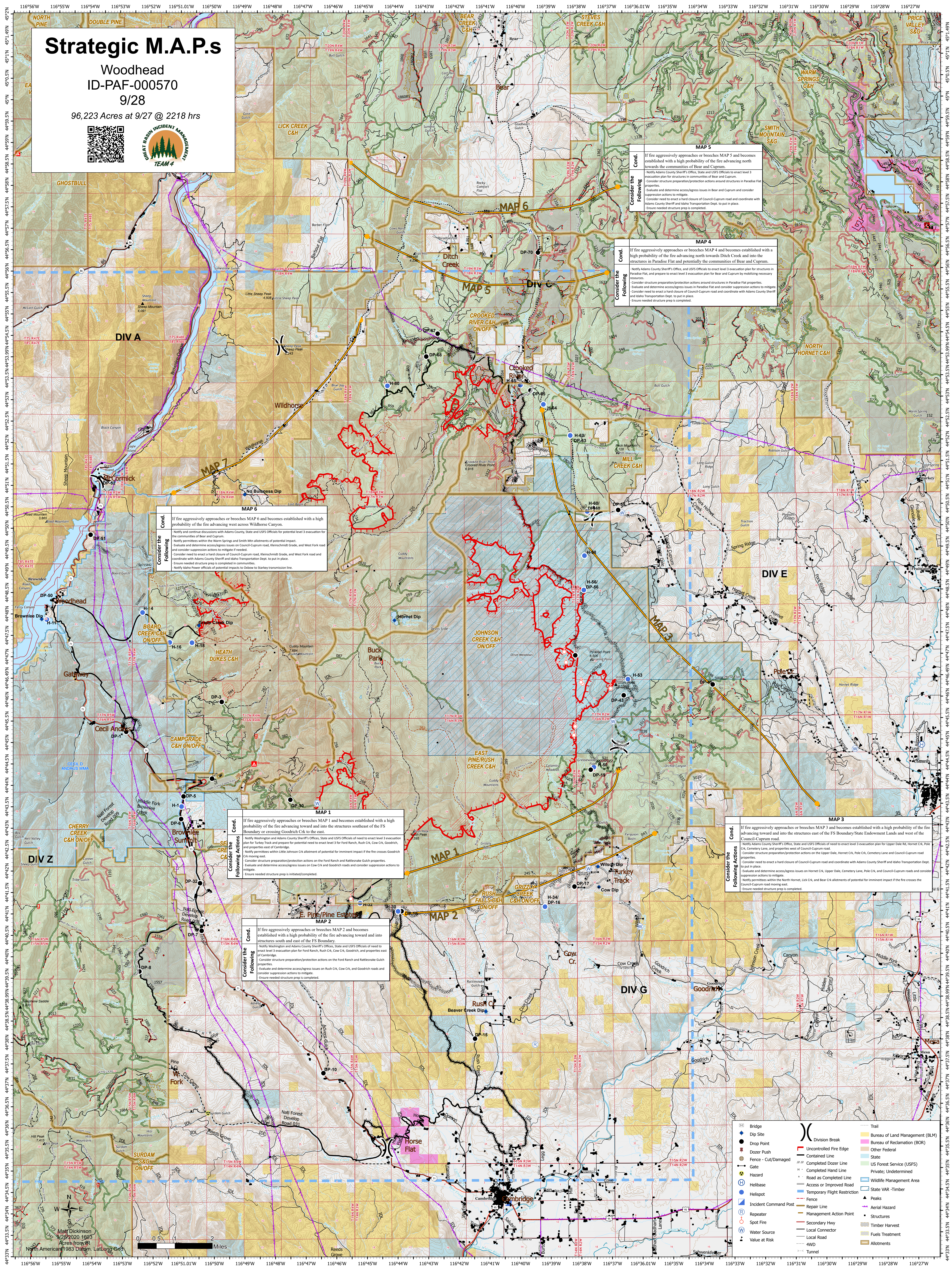


# Strategic M.A.P.s

Woodhead  
ID-PAF-000570  
9/28

96,223 Acres at 9/27 @ 2218 hrs



**MAP 6**  
Cond. If fire aggressively approaches or breaches MAP 6 and becomes established with a high probability of the fire advancing west across Wildhorse Canyon.  
Consider the Following:  
Notify and continue discussions with Adams County, State and USFS Officials for potential level 3 evacuation for the communities of Bear and Cuprum.  
Notify permittees within the Warm Springs and Smith Mtn allotments of potential impact.  
Evaluate and determine access/egress issues on Council-Cuprum road, Kleinschmidt Grade, and West Fork road and consider suppression actions to mitigate if needed.  
Consider need to enact a hard closure of Council-Cuprum road, Kleinschmidt Grade, and West Fork road and coordinate with Adams County Sheriff and Idaho Transportation Dept. to put in place.  
Ensure needed structure prep is completed in communities.  
Notify Idaho Power officials of potential impacts to Oxbow to Starkey transmission line.

**MAP 1**  
Cond. If fire aggressively approaches or breaches MAP 1 and becomes established with a high probability of the fire advancing toward and into the structures southeast of the FS Boundary on Goodrich Crk to the east.  
Consider the Following:  
Notify Washington and Adams County Sheriff's Offices, State and USFS Officials of need to enact level 3 evacuation plan for Turkey Track and prepare for potential need to enact level 3 for Ford Ranch, Rush Crk, Cow Crk, Goodrich, and properties east of Cambridge.  
Notify permittees within Little Johnson Crk allotment of potential for imminent impact if the fire crosses Goodrich Crk moving east.  
Consider structure preparation/protection actions on the Ford Ranch and Rattlesnake Gulch properties.  
Evaluate and determine access/egress issues on Cow Crk and Goodrich roads and consider suppression actions to mitigate.  
Ensure needed structure prep is initiated/completed.

**MAP 2**  
Cond. If fire aggressively approaches or breaches MAP 2 and becomes established with a high probability of the fire advancing toward and into structures south and east of the FS Boundary.  
Consider the Following:  
Notify Washington and Adams County Sheriff's Offices, State and USFS Officials of need to enact level 3 evacuation plan for Ford Ranch, Rush Crk, Cow Crk, Goodrich, and properties east of Cambridge.  
Consider structure preparation/protection actions on the Ford Ranch and Rattlesnake Gulch properties.  
Evaluate and determine access/egress issues on Rush Crk, Cow Crk, and Goodrich roads and consider suppression actions to mitigate.  
Ensure needed structure prep is completed.

**MAP 5**  
Cond. If fire aggressively approaches or breaches MAP 5 and becomes established with a high probability of the fire advancing north towards the communities of Bear and Cuprum.  
Consider the Following:  
Notify Adams County Sheriff's Office, State and USFS Officials to enact level 3 evacuation plan for structures in communities of Bear and Cuprum.  
Consider structure preparation/protection actions around structures in Paradise Flat properties.  
Evaluate and determine access/egress issues in Bear and Cuprum and consider suppression actions to mitigate.  
Consider need to enact a hard closure of Council-Cuprum road and coordinate with Adams County Sheriff and Idaho Transportation Dept. to put in place.  
Ensure needed structure prep is completed.

**MAP 4**  
Cond. If fire aggressively approaches or breaches MAP 4 and becomes established with a high probability of the fire advancing north towards Ditch Creek and into the structures in Paradise Flat and potentially the communities of Bear and Cuprum.  
Consider the Following:  
Notify Adams County Sheriff's Office, State and USFS Officials to enact level 3 evacuation plan for structures in Paradise Flat, and prepare to enact level 3 evacuation plan for Bear and Cuprum by mobilizing necessary resources.  
Consider structure preparation/protection actions around structures in Paradise Flat properties.  
Evaluate and determine access/egress issues in Paradise Flat and consider suppression actions to mitigate.  
Consider need to enact a hard closure of Council-Cuprum road and coordinate with Adams County Sheriff and Idaho Transportation Dept. to put in place.  
Ensure needed structure prep is completed.

**MAP 3**  
Cond. If fire aggressively approaches or breaches MAP 3 and becomes established with a high probability of the fire advancing toward and into the structures east of the FS Boundary/State Endowment Lands and west of the Council-Cuprum road.  
Consider the Following:  
Notify Adams County Sheriff's Office, State and USFS Officials of need to enact level 3 evacuation plan for Upper Dale Rd, Hornet Crk, Pole Crk, Cemetery Lane, and properties west of Council-Cuprum road.  
Consider structure preparation/protection actions on the Upper Dale, Hornet Crk, Pole Crk, Cemetery Lane, and Council-Cuprum roads and consider suppression actions to mitigate.  
Notify permittees within the North Hornet, Lick Crk, and Bear Crk allotments of potential for imminent impact if the fire crosses the Council-Cuprum road moving east.  
Ensure needed structure prep is completed.

- Bridge
- Dip Site
- Drop Point
- Dozer Push
- Fence - Cut/Damaged
- Gate
- Hazard
- Helibase
- Hotspot
- Incident Command Post
- Repeater
- Spot Fire
- Water Source
- Trail
- Division Break
- Uncontrolled Fire Edge
- Contained Line
- Completed Dozer Line
- Completed Hand Line
- Road as Completed Line
- Access or Improved Road
- Temporary Flight Restriction
- Force VAR - Timber
- Peaks
- Aerial Hazard
- Structures
- Timber Harvest
- Fuels Treatment
- Allotments
- Bureau of Land Management (BLM)
- Bureau of Reclamation (BOR)
- Other Federal
- State
- US Forest Service (USFS)
- Private; Undetermined
- Wildlife Management Area
- State VAR - Timber

Map Dickinson  
9/23/2020 1603  
Acres from IR  
North American 1983 Datum - Laidong Grid