

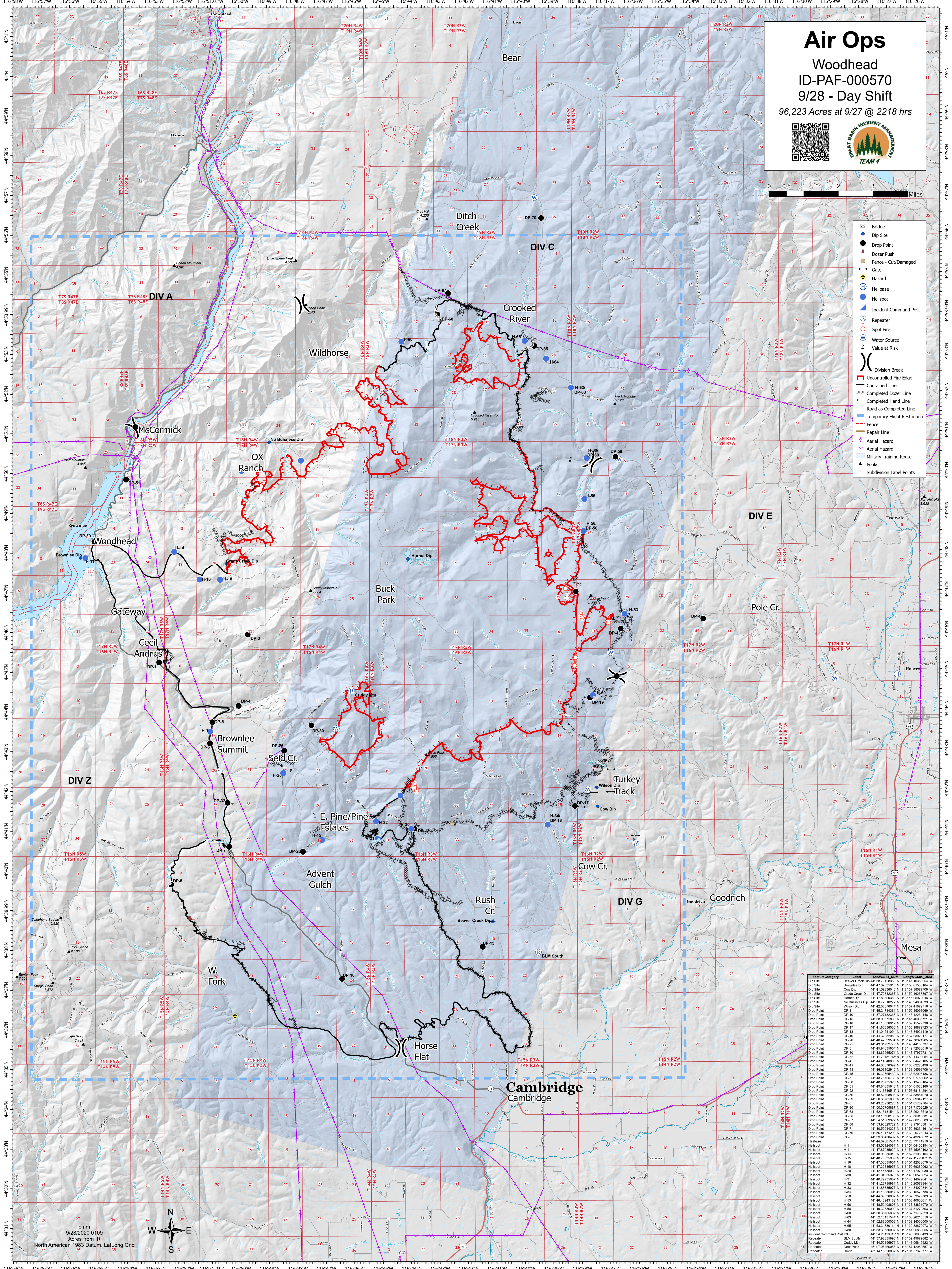
Air Ops

Woodhead

ID-PAF-000570

9/28 - Day Shift

96,223 Acres at 9/27 @ 2218 hrs



- Bridge
- Dip Site
- Drop Point
- Dozer Push
- Fence - Cut/Damaged
- Gate
- Hazard
- Helibase
- Helispot
- Incident Command Post
- Repeater
- Spot Fire
- Water Source
- Value at Risk
- Division Break
- Uncontrolled Fire Edge
- Contained Line
- Completed Dozer Line
- Completed Hand Line
- Road as Completed Line
- Temporary Flight Restriction
- Fence
- Repair Line
- Aerial Hazard
- Aerial Training Route
- Peaks
- Subdivision Label Points

Feature/Category	Label	Latitude	Longitude
Dip Site	Beaver Creek Dip	44° 38' 00.00" N	116° 30' 00.00" W
Dip Site	Brownlee Dip	44° 47' 47.830910" N	116° 55' 18.9164" W
Dip Site	Cow Dip	44° 41' 53.804000" N	116° 50' 46.263800" W
Dip Site	Grate Creek Dip	44° 47' 72.323600" N	116° 50' 46.263800" W
Dip Site	Hornet Dip	44° 41' 43.804000" N	116° 50' 46.263800" W
Dip Site	No Business Dip	44° 50' 77.810200" N	116° 48' 94.846500" W
Dip Site	Wilson Dip	44° 42' 08.804000" N	116° 51' 47.817910" W
Drop Point	DP-1	44° 48' 27.182800" N	116° 48' 42.824480" W
Drop Point	DP-15	44° 41' 13.816017" N	116° 51' 16.979730" W
Drop Point	DP-16	44° 41' 13.816017" N	116° 51' 16.979730" W
Drop Point	DP-17	44° 41' 02.626500" N	116° 51' 16.979730" W
Drop Point	DP-18	44° 41' 04.641094" N	116° 43' 84.842141" W
Drop Point	DP-19	44° 44' 32.958980" N	116° 51' 37.432917" W
Drop Point	DP-20	44° 44' 32.958980" N	116° 51' 37.432917" W
Drop Point	DP-25	44° 43' 01.762770" N	116° 48' 41.157370" W
Drop Point	DP-3	44° 48' 48.840596" N	116° 48' 42.824480" W
Drop Point	DP-30	44° 43' 46.626071" N	116° 47' 47.817910" W
Drop Point	DP-32	44° 41' 17.119190" N	116° 50' 46.263800" W
Drop Point	DP-4	44° 48' 14.848000" N	116° 50' 44.291000" W
Drop Point	DP-41	44° 44' 48.837692" N	116° 51' 37.432917" W
Drop Point	DP-43	44° 48' 14.848000" N	116° 50' 44.291000" W
Drop Point	DP-45	44° 48' 35.654300" N	116° 53' 82.026480" W
Drop Point	DP-50	44° 48' 28.735920" N	116° 55' 13.840164" W
Drop Point	DP-51	44° 48' 84.840400" N	116° 54' 03.801800" W
Drop Point	DP-52	44° 51' 16.846100" N	116° 51' 37.432917" W
Drop Point	DP-56	44° 48' 52.408000" N	116° 51' 37.432917" W
Drop Point	DP-59	44° 51' 32.355970" N	116° 47' 17.762120" W
Drop Point	DP-6	44° 43' 20.962700" N	116° 51' 02.762700" W
Drop Point	DP-63	44° 52' 13.131544" N	116° 38' 26.215510" W
Drop Point	DP-65	44° 53' 16.861600" N	116° 39' 59.465310" W
Drop Point	DP-67	44° 51' 01.816000" N	116° 42' 07.913281" W
Drop Point	DP-68	44° 53' 05.292700" N	116° 42' 07.913281" W
Drop Point	DP-70	44° 58' 45.142900" N	116° 38' 28.732430" W
Drop Point	DP-8	44° 48' 84.840400" N	116° 52' 42.824480" W
Drop Point	DP-9	44° 48' 84.840400" N	116° 52' 42.824480" W
Helispot	H-1	44° 43' 01.762770" N	116° 51' 02.762770" W
Helispot	H-14	44° 48' 03.058400" N	116° 52' 31.080104" W
Helispot	H-15	44° 48' 14.848000" N	116° 51' 37.432917" W
Helispot	H-16	44° 47' 33.359610" N	116° 51' 42.808076" W
Helispot	H-18	44° 47' 33.359610" N	116° 51' 42.808076" W
Helispot	H-20	44° 42' 45.735920" N	116° 48' 42.824480" W
Helispot	H-30	44° 41' 03.816017" N	116° 48' 42.824480" W
Helispot	H-32	44° 41' 03.816017" N	116° 48' 42.824480" W
Helispot	H-33	44° 41' 03.816017" N	116° 48' 42.824480" W
Helispot	H-34	44° 41' 03.816017" N	116° 48' 42.824480" W
Helispot	H-50	44° 44' 32.958980" N	116° 51' 37.432917" W
Helispot	H-56	44° 48' 52.408000" N	116° 51' 37.432917" W
Helispot	H-58	44° 48' 35.654300" N	116° 51' 37.432917" W
Helispot	H-59	44° 48' 35.654300" N	116° 51' 37.432917" W
Helispot	H-60	44° 50' 35.705667" N	116° 51' 37.432917" W
Helispot	H-63	44° 52' 13.131544" N	116° 38' 26.215510" W
Helispot	H-64	44° 53' 13.816111" N	116° 38' 88.797073" W
Helispot	H-65	44° 53' 32.355970" N	116° 38' 88.797073" W
Incident Command Post	ICP	44° 54' 23.101810" N	116° 40' 38.364330" W
Repeater	BLM South	44° 51' 32.355970" N	116° 38' 88.797073" W
Repeater	Cuddy Mtn	44° 48' 52.155970" N	116° 48' 05.696220" W
Repeater	Deer Peak	44° 07' 58.466650" N	116° 57' 12.882570" W
Repeater	Smith	44° 14' 15.500000" N	117° 01' 52.370770" W

cm
9/28/2020 0109
Acres from IR
North American 1983 Datum. Lat/Long Grid