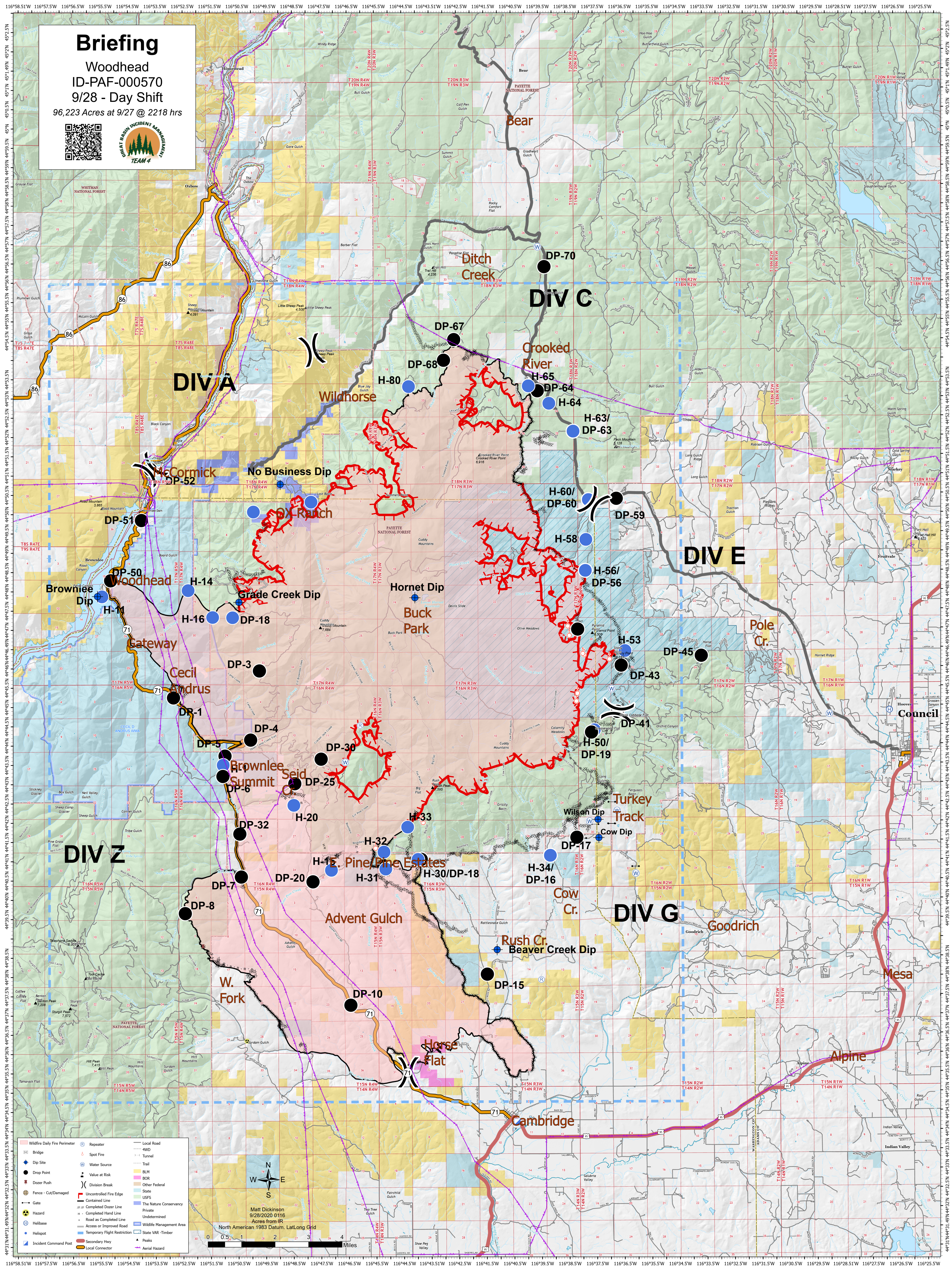


Briefing

Woodhead
ID-PAF-000570
9/28 - Day Shift
96,223 Acres at 9/27 @ 2218 hrs



- Wildfire Daily Fire Perimeter
- Spot Fire
- Local Road
- AWD
- Bridge
- Water Source
- Tunnel
- Dip Site
- Value at Risk
- Trail
- Dozer Push
- Division Break
- Uncontrolled Fire Edge
- Fence - Cut/Damaged
- Gate
- Completed Dose Line
- Completed Hand Line
- Road as Completed Line
- Access or Improved Road
- Hazard
- Helibase
- Helispot
- Incident Command Post
- Repeater
- Water Source
- Value at Risk
- Division Break
- Uncontrolled Fire Edge
- Fence - Cut/Damaged
- Gate
- Completed Dose Line
- Completed Hand Line
- Road as Completed Line
- Access or Improved Road
- Hazard
- Helibase
- Helispot
- Incident Command Post
- Local Road
- AWD
- Trail
- BLM
- BOR
- Other Federal
- State
- USFS
- The Nature Conservancy
- Private
- Undetermined
- Wildlife Management Area
- State VAR - Timber
- Wildlife Management Area
- Temporary Flight Restriction
- State VAR - Timber
- Secondary Hazy
- Local Connector
- Aerial Hazard

Matt Dickinson
9/28/2020 0116
Acres from IR
North American 1983 Datum, Lat/Long Grid

