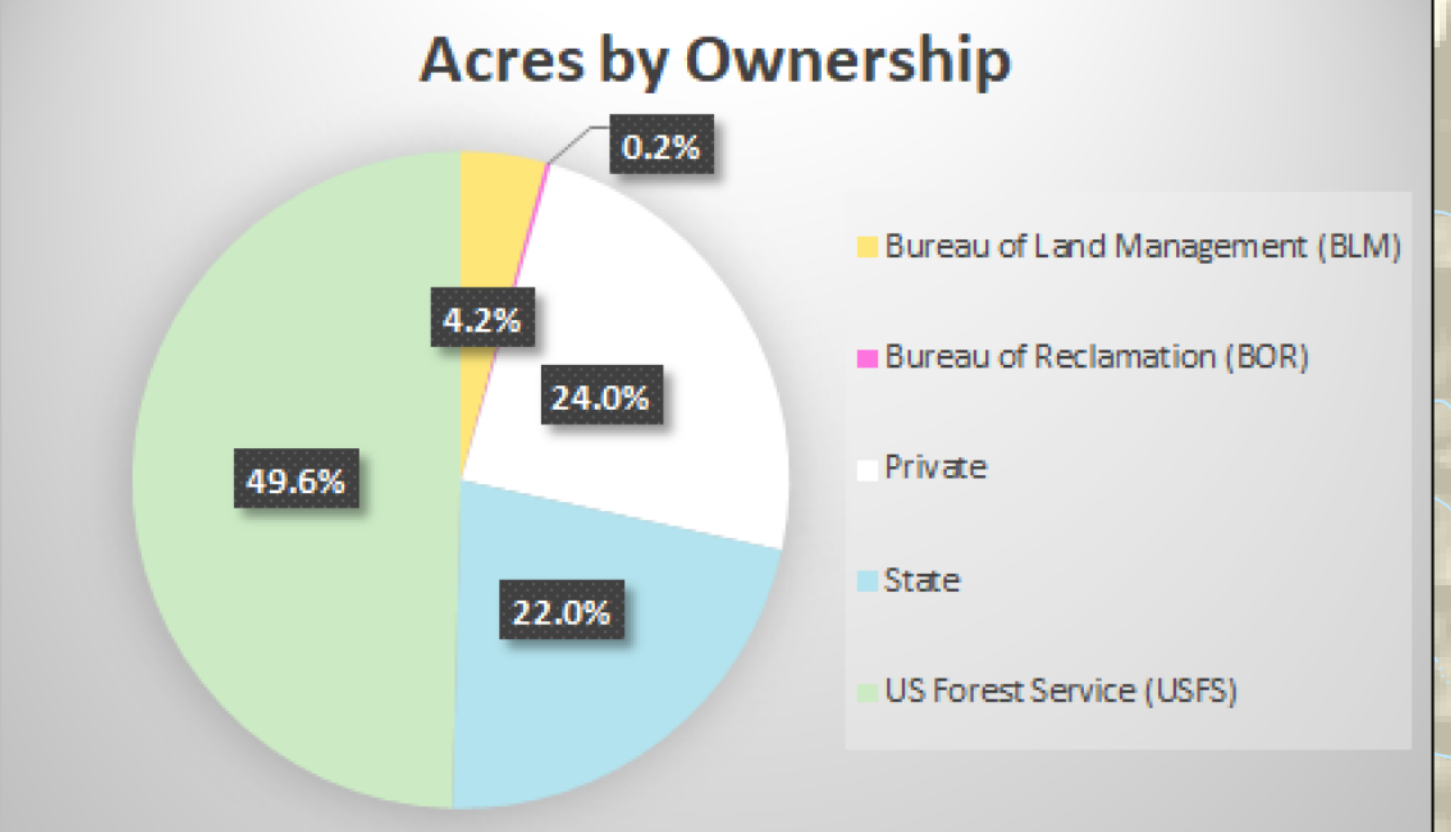
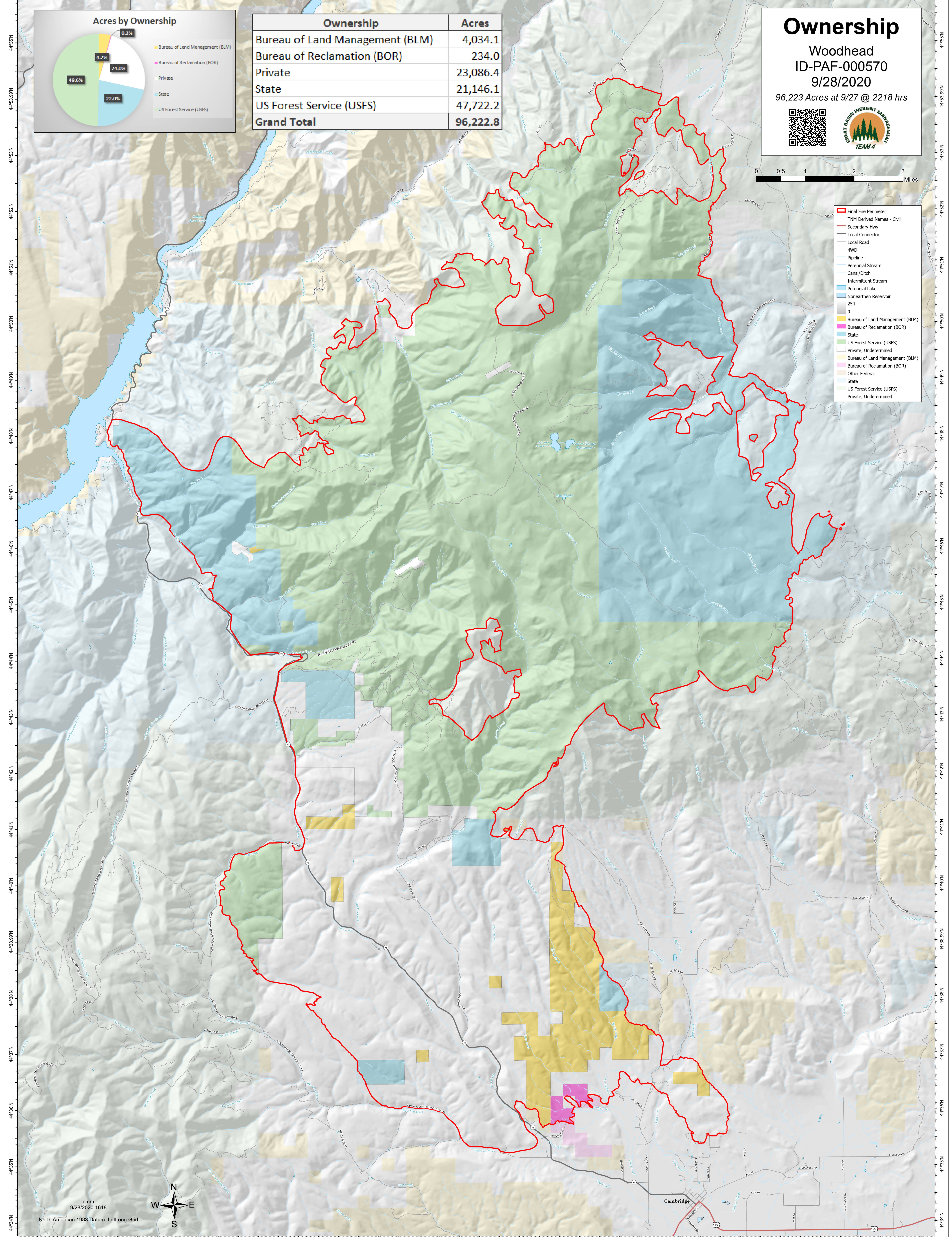


116°57'W 116°56'W 116°55'W 116°54'W 116°53'W 116°52'W 116°51.01'W 116°50'W 116°49'W 116°48'W 116°47'W 116°46'W 116°45'W 116°44'W 116°43'W 116°42'W 116°41'W 116°40'W 116°39'W 116°38'W 116°37'W 116°36.01'W 116°35'W



Ownership	Acres
Bureau of Land Management (BLM)	4,034.1
Bureau of Reclamation (BOR)	234.0
Private	23,086.4
State	21,146.1
US Forest Service (USFS)	47,722.2
<b>Grand Total</b>	<b>96,222.8</b>

# Ownership

Woodhead  
ID-PAF-000570  
9/28/2020  
96,223 Acres at 9/27 @ 2218 hrs



- Final Fire Perimeter
- TNM Derived Names - Civil
- Secondary Hwy
- Local Connector
- Local Road
- 4WD
- Pipeline
- Perennial Stream
- Canal/Ditch
- Intermittent Stream
- Perennial Lake
- Nonearthen Reservoir
- 0
- Bureau of Land Management (BLM)
- Bureau of Reclamation (BOR)
- State
- US Forest Service (USFS)
- Private; Undetermined
- Bureau of Land Management (BLM)
- Bureau of Reclamation (BOR)
- Other Federal
- State
- US Forest Service (USFS)
- Private; Undetermined

cm  
9/28/2020 1618

North American 1983 Datum, LatLong Grid

116°57'W 116°56'W 116°55'W 116°54'W 116°53'W 116°52'W 116°51.01'W 116°50'W 116°49'W 116°48'W 116°47'W 116°46'W 116°45'W 116°44'W 116°43'W 116°42'W 116°41'W 116°40'W 116°39'W 116°38'W 116°37'W 116°36.01'W 116°35'W