

# Operations DIV C

Woodhead  
ID-PAF-000570  
10/1 - Day Shift

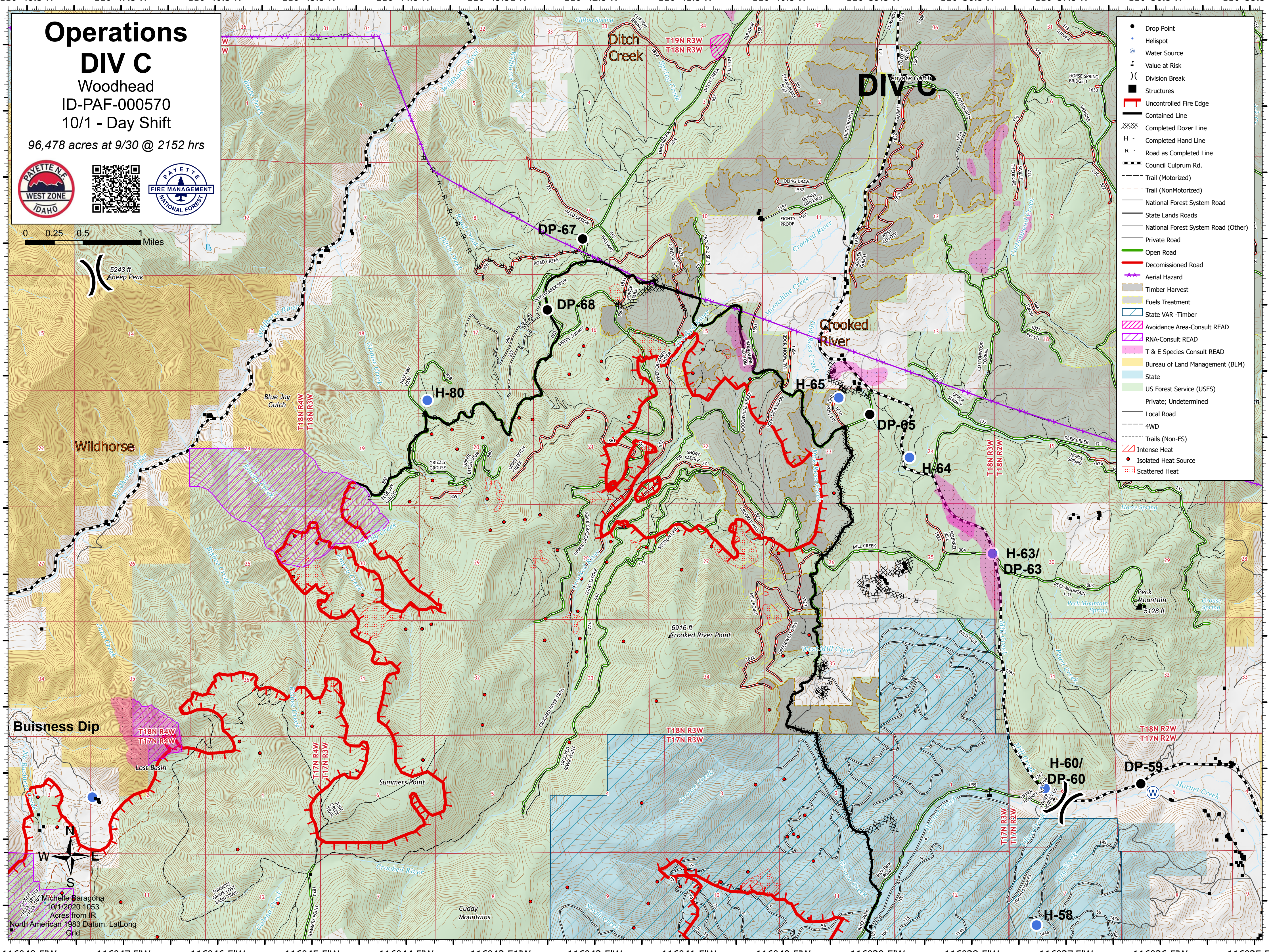
96,478 acres at 9/30 @ 2152 hrs



0 0.25 0.5 1 Miles



- Drop Point
- Helispot
- Water Source
- Value at Risk
- ( ) Division Break
- Structures
- ▬ Uncontrolled Fire Edge
- ▬ Contained Line
- ▬ Completed Dozer Line
- H - Completed Hand Line
- R - Road as Completed Line
- ▬ Council Culpurum Rd.
- ▬ Trail (Motorized)
- ▬ Trail (NonMotorized)
- ▬ National Forest System Road
- ▬ State Lands Roads
- ▬ National Forest System Road (Other)
- ▬ Private Road
- ▬ Open Road
- ▬ Decomissioned Road
- ▬ Aerial Hazard
- ▬ Timber Harvest
- ▬ Fuels Treatment
- ▬ State VAR -Timber
- ▬ Avoidance Area-Consult READ
- ▬ RNA-Consult READ
- ▬ T & E Species-Consult READ
- ▬ Bureau of Land Management (BLM)
- ▬ State
- ▬ US Forest Service (USFS)
- ▬ Private; Undetermined
- ▬ Local Road
- ▬ 4WD
- ▬ Trails (Non-FS)
- ▬ Intense Heat
- Isolated Heat Source
- ▬ Scattered Heat



Michelle Baragona  
10/1/2020 1053  
Acres from IR  
North American 1983 Datum, Lat/Long  
Grid