

# Operations

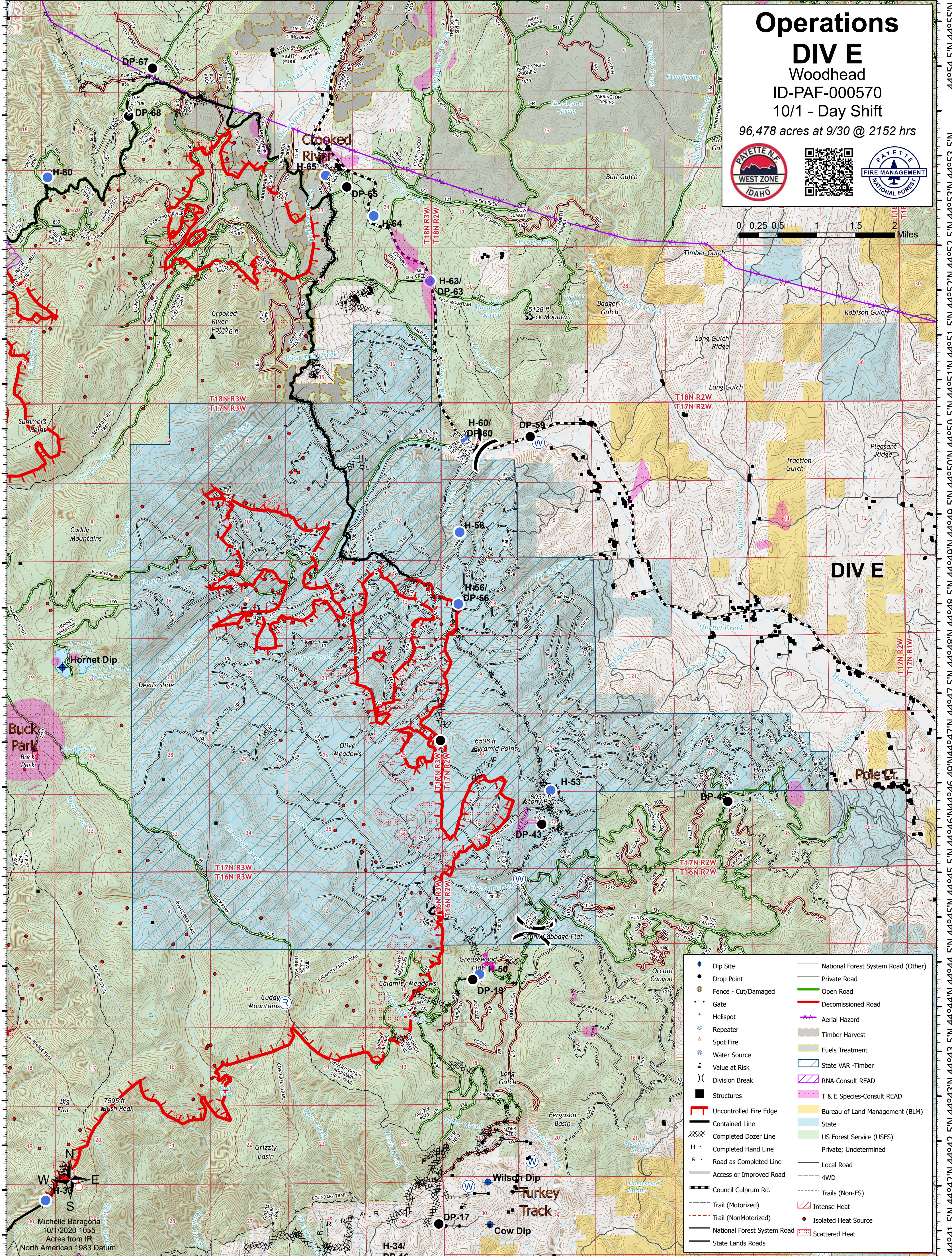
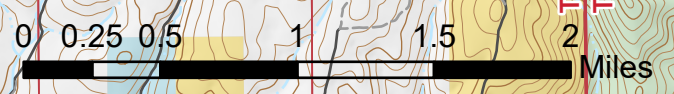
## DIV E

Woodhead

ID-PAF-000570

10/1 - Day Shift

96,478 acres at 9/30 @ 2152 hrs



	Dip Site		National Forest System Road (Other)
	Drop Point		Private Road
	Fence - Cut/Damaged		Open Road
	Gate		Decommissioned Road
	Helispot		Aerial Hazard
	Repeater		Timber Harvest
	Spot Fire		Fuels Treatment
	Water Source		State VAR - Timber
	Value at Risk		RNA-Consult READ
	Division Break		T & E Species-Consult READ
	Structures		Bureau of Land Management (BLM)
	Uncontrolled Fire Edge		State (USFS)
	Contained Line		Private; Undetermined
	Completed Dozer Line		Local Road
	Completed Hand Line		4WD
	Road as Completed Line		Trails (Non-FS)
	Access or Improved Road		Intense Heat
	Council Culprum Rd.		Isolated Heat Source
	Trail (Motorized)		Scattered Heat
	Trail (Non-Motorized)		
	National Forest System Road		
	State Lands Roads		