

Air Operations Map

Bear and Bennion Fire

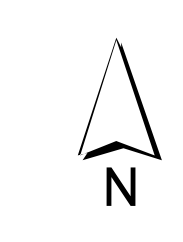
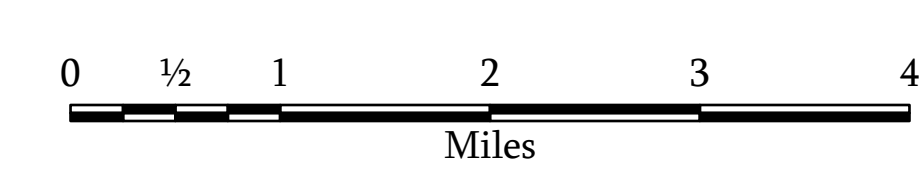
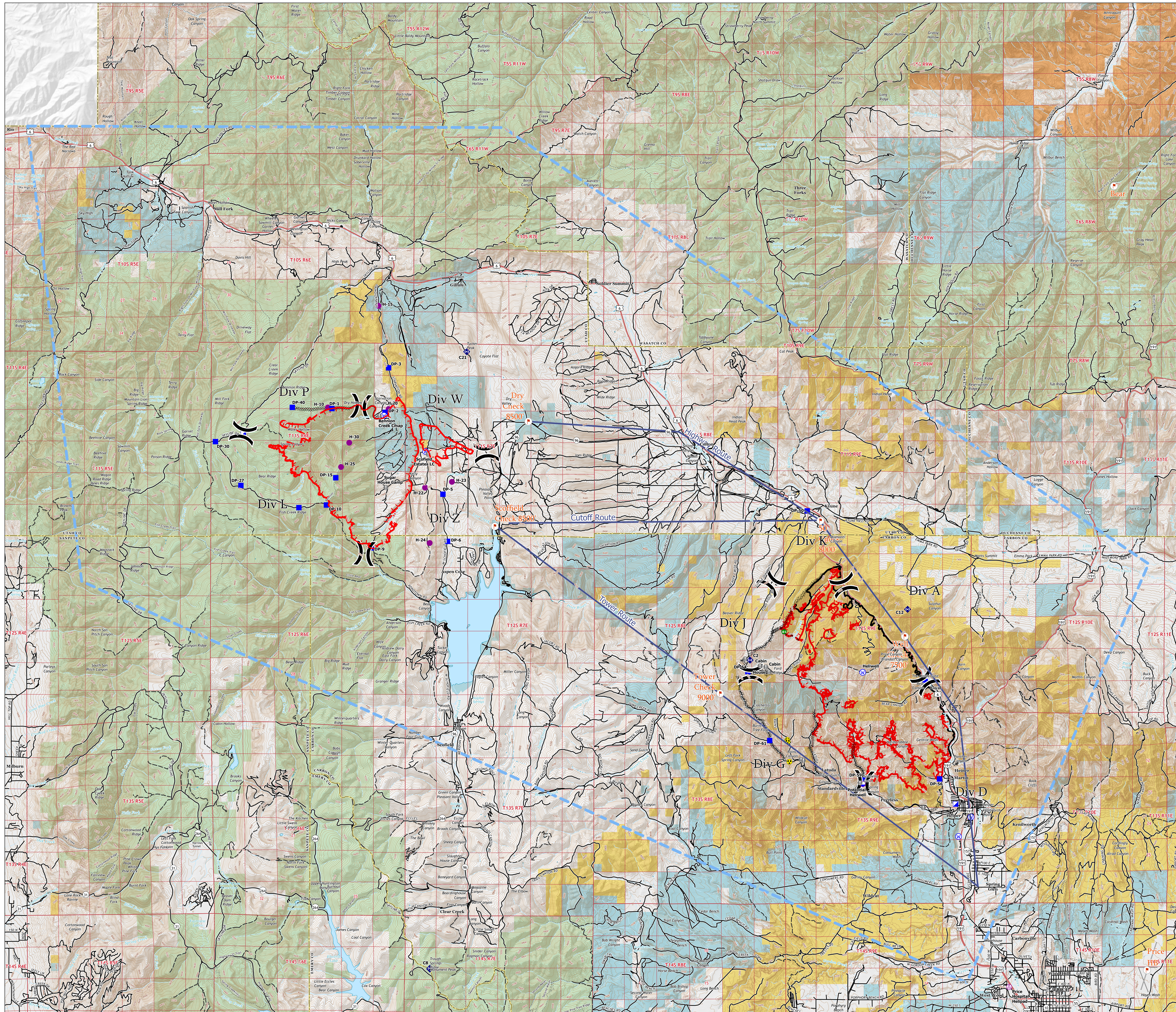
UT-VLD-000127
UT-MLF-000115

June 15, 2021



- Aerial Hazard
 - Dip Site
 - Helispot
 - X Division Break
 - X Incident Command Post
 - Drop Point
 - Value at Risk
 - + Fence - Cut/Damaged
 - + Repeater
 - + Hazard
 - + Water Source
 - + Checkpoints
 - Helicopter Routes
 - Completed Dozer Line
 - Completed Hand Line
 - Fire Edge
 - Contained Line
 - TTR: 1/2211
- Land Status**
- Bureau of Indian Affairs (BIA)
 - Bureau of Land Management (BLM)
 - State
 - US Forest Service (USFS)

PC Point Type	Label	Lat WGS84 EDDM	Long WGS84 EDDM
Bear	Aerial Hazard	39° 36.379'	-110° 49.997'
Bear	Drop Point	39° 41.961'	-110° 53.186'
Bear	Drop Point	39° 49.470'	-110° 57.157'
Bear	Drop Point	39° 44.778'	-110° 52.963'
Bear	Drop Point	39° 47.007'	-110° 52.488'
Bear	Drop Point	39° 42.078'	-110° 55.173'
Bear	Drop Point	39° 43.160'	-110° 58.497'
Bear	Drop Point	39° 45.072'	-110° 59.273'
Bear	Water Source	39° 45.052'	-110° 55.188'
Bear	Water Source	39° 41.052'	-110° 51.342'
Bear	Water Source	39° 40.518'	-110° 51.787'
Bennion Creek	Drop Point	39° 49.269'	-111° 14.182'
Bennion Creek	Drop Point	39° 49.617'	-111° 14.251'
Bennion Creek	Drop Point	39° 50.367'	-111° 13.961'
Bennion Creek	Drop Point	39° 52.169'	-111° 12.210'
Bennion Creek	Drop Point	39° 49.543'	-111° 15.271'
Bennion Creek	Drop Point	39° 50.148'	-111° 17.340'
Bennion Creek	Drop Point	39° 53.392'	-111° 12.084'
Bennion Creek	Drop Point	39° 53.390'	-111° 18.251'
Bennion Creek	Drop Point	39° 52.298'	-111° 15.515'
Bennion Creek	Drop Point	39° 49.921'	-111° 10.140'
Bennion Creek	Drop Point	39° 48.442'	-111° 12.695'
Bennion Creek	Helispot	39° 52.299'	-111° 14.244'
Bennion Creek	Helispot	39° 53.068'	-111° 14.251'
Bennion Creek	Helispot	39° 52.259'	-111° 12.082'
Bennion Creek	Helispot	39° 50.103'	-111° 10.777'
Bennion Creek	Helispot	39° 50.262'	-111° 9.820'
Bennion Creek	Helispot	39° 48.580'	-111° 10.869'
Bennion Creek	Helispot	39° 50.663'	-111° 13.772'
Bennion Creek	Helispot	39° 51.331'	-111° 13.483'
Bennion Creek	Water Source	39° 51.095'	-111° 10.759'



1:58,000

Name: NAD 1983 UTM Zone 12N