

Transportation Map

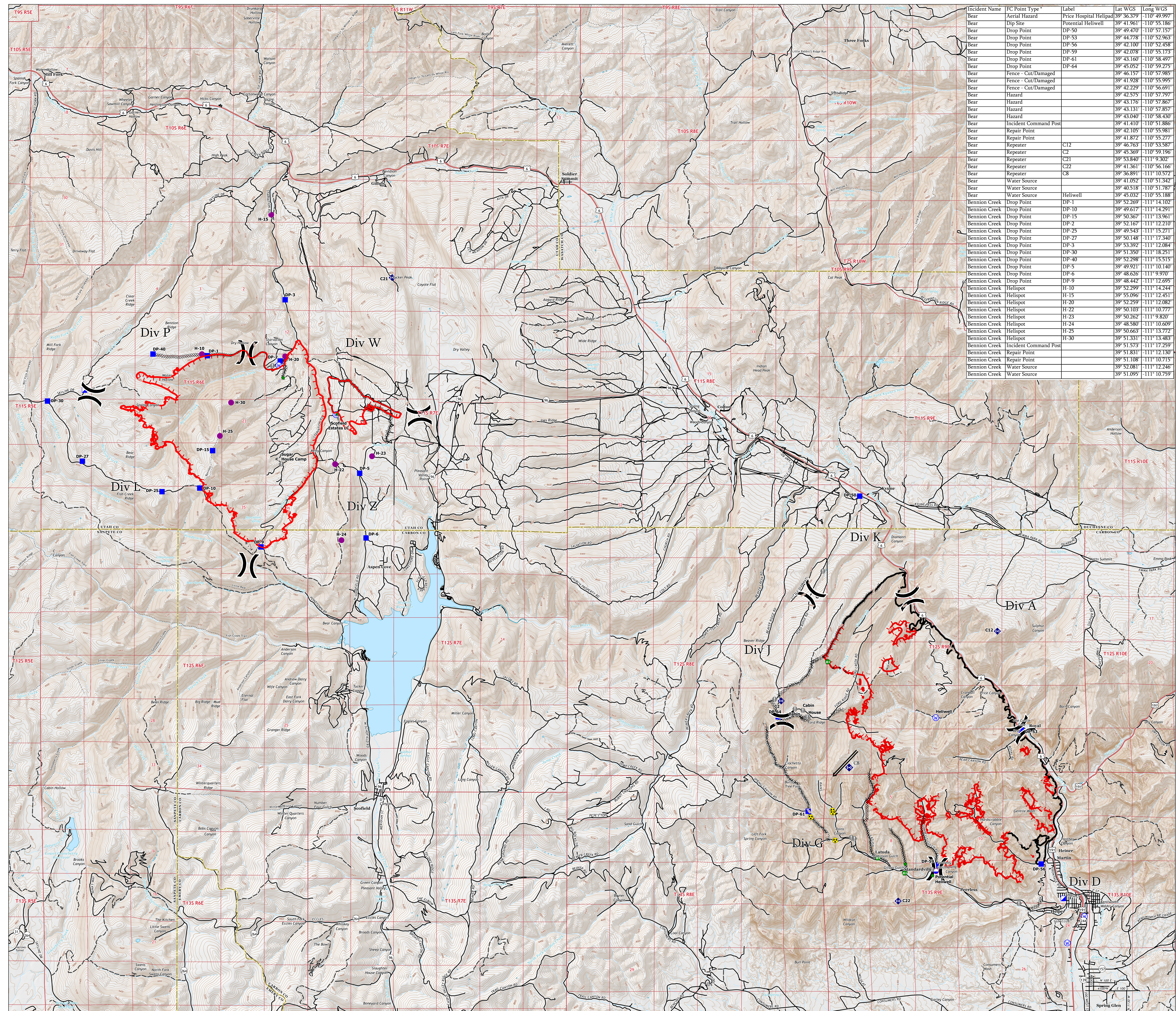
Bear and Bennion Fire

UT-VLD-000127
UT-MLF-000115

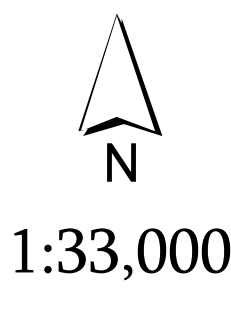
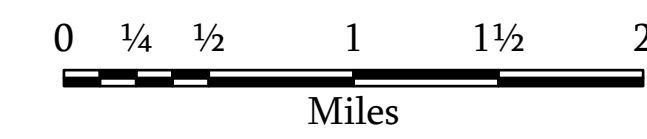
June 16, 2021



- Air Operations**
 - Dip Site
 - Helispot
- Assignment Breaks**
 - Division Break
- Logistics**
 - Incident Command Post
 - Drop Point
- Reference**
 - Value at Risk
- Repair**
 - Repair Point
 - Fence - Cut/Damaged
- Communications**
 - Repeater
- Safety**
 - Hazard
- Water**
 - Water Source
- Ops Completed**
 - Completed Dozer Line
 - Completed Hand Line
- Reference**
 - Access or Improved Road
- Fire Perimeter**
 - Fire Edge
 - Contained Line
- Transportation**
 - Highway
 - Road
 - 4WD Road
 - Trail
- NHDLine**
- FCode**
 - Tunnel
- Event Polygon**
 - Other
 - Prescribed Fire
 - Wildfire Daily Fire Perimeter



Incident Name	FC Point Type *	Label	Lat WGS	Long WGS
Bear	Aerial Hazard	Price Hospital Helipad	39° 36.379	-110° 49.997
Bear	Dip Site	Potential Helipad	39° 41.961	-110° 55.186
Bear	Drop Point	DP-50	39° 49.470	-110° 57.157
Bear	Drop Point	DP-53	39° 44.778	-110° 52.963
Bear	Drop Point	DP-56	39° 42.100	-110° 52.488
Bear	Drop Point	DP-59	39° 42.078	-110° 55.173
Bear	Drop Point	DP-61	39° 43.160	-110° 58.497
Bear	Drop Point	DP-64	39° 45.052	-110° 59.275
Bear	Fence - Cut/Damaged		39° 46.157	-110° 57.985
Bear	Fence - Cut/Damaged		39° 41.928	-110° 55.995
Bear	Fence - Cut/Damaged		39° 42.229	-110° 56.691
Bear	Hazard		39° 42.575	-110° 57.797
Bear	Hazard		39° 43.176	-110° 57.867
Bear	Hazard		39° 43.131	-110° 57.857
Bear	Hazard		39° 43.040	-110° 58.430
Bear	Incident Command Post		39° 41.410	-110° 51.886
Bear	Repair Point		39° 42.105	-110° 55.981
Bear	Repeater	C12	39° 40.872	-110° 55.277
Bear	Repeater	C2	39° 45.369	-110° 59.196
Bear	Repeater	C21	39° 53.840	-111° 9.302
Bear	Repeater	C22	39° 41.361	-110° 56.166
Bear	Repeater	C8	39° 36.891	-111° 10.572
Bear	Water Source		39° 41.052	-110° 51.342
Bear	Water Source		39° 40.518	-110° 51.787
Bear	Water Source	Helipad	39° 45.032	-110° 55.188
Bennion Creek	Drop Point	DP-1	39° 52.269	-111° 14.102
Bennion Creek	Drop Point	DP-10	39° 49.617	-111° 14.291
Bennion Creek	Drop Point	DP-15	39° 50.367	-111° 13.961
Bennion Creek	Drop Point	DP-2	39° 52.167	-111° 12.210
Bennion Creek	Drop Point	DP-25	39° 49.543	-111° 15.271
Bennion Creek	Drop Point	DP-27	39° 50.148	-111° 15.340
Bennion Creek	Drop Point	DP-3	39° 53.393	-111° 12.084
Bennion Creek	Drop Point	DP-30	39° 51.350	-111° 18.251
Bennion Creek	Drop Point	DP-40	39° 52.298	-111° 15.515
Bennion Creek	Drop Point	DP-5	39° 49.921	-111° 10.140
Bennion Creek	Drop Point	DP-6	39° 48.626	-111° 9.970
Bennion Creek	Drop Point	DP-9	39° 48.442	-111° 12.695
Bennion Creek	Helispot	H-10	39° 52.299	-111° 14.244
Bennion Creek	Helispot	H-15	39° 55.096	-111° 12.451
Bennion Creek	Helispot	H-20	39° 52.259	-111° 12.082
Bennion Creek	Helispot	H-22	39° 50.103	-111° 10.777
Bennion Creek	Helispot	H-23	39° 50.262	-111° 9.820
Bennion Creek	Helispot	H-24	39° 48.580	-111° 10.609
Bennion Creek	Helispot	H-25	39° 50.663	-111° 15.727
Bennion Creek	Helispot	H-30	39° 51.331	-111° 13.483
Bennion Creek	Incident Command Post		39° 51.573	-111° 17.259
Bennion Creek	Repair Point		39° 51.831	-111° 12.130
Bennion Creek	Repair Point		39° 51.108	-111° 10.715
Bennion Creek	Water Source		39° 52.081	-111° 12.246
Bennion Creek	Water Source		39° 51.095	-111° 10.759



1:33,000

Name: NAD 1983 UTM Zone 12N