

Pilot Map

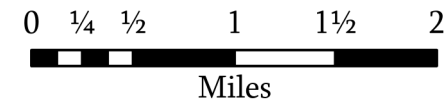
Bear Fire

UT-VLD-000127

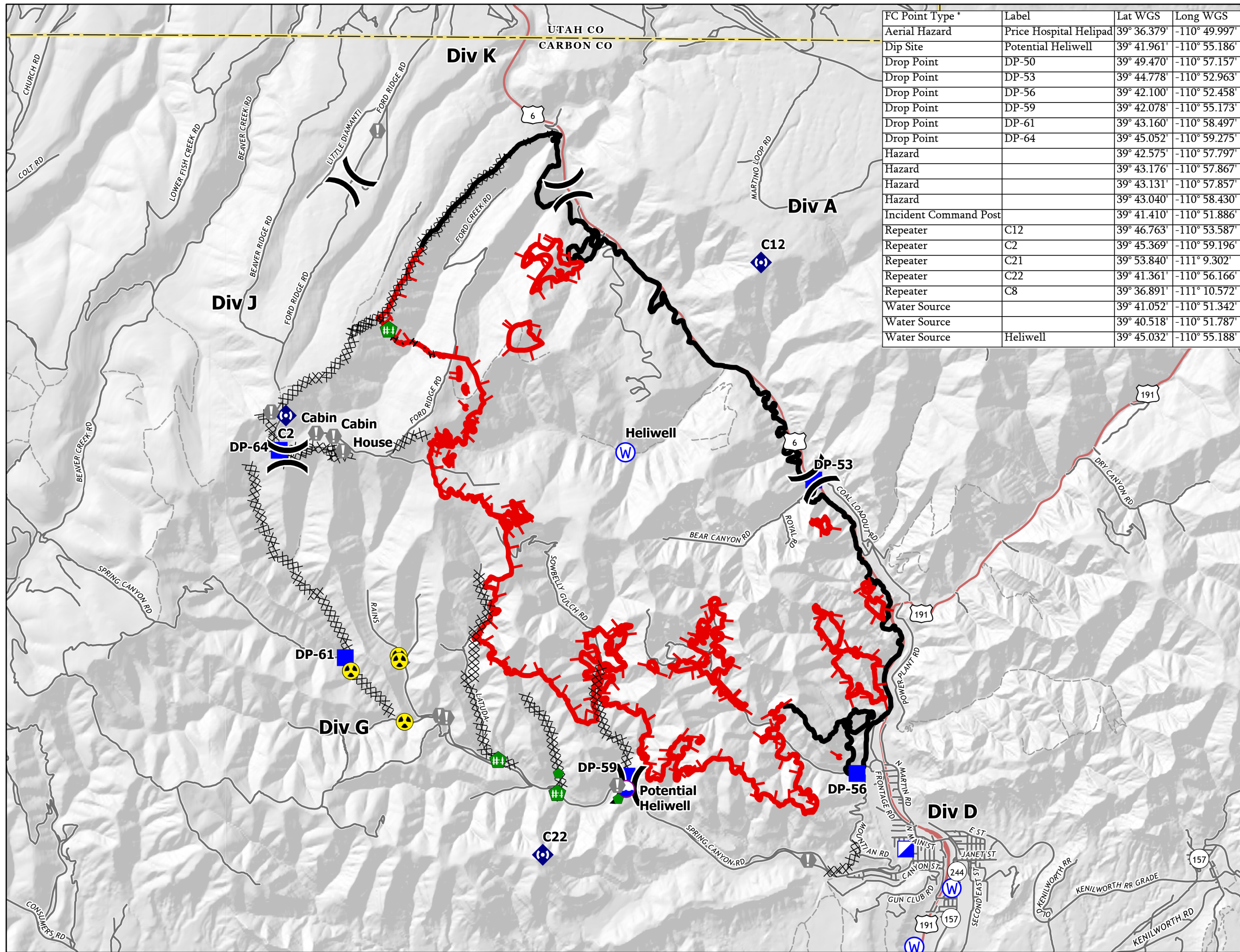
June 16, 2021



- Ops Completed**
- XX Completed Dozer Line
- H Completed Hand Line
- Reference**
- Access or Improved Road
- Fire Perimeter**
- █ Fire Edge
- █ Contained Line
- Air Operations**
- Dip Site
- Assignment Breaks**
-) Division Break
- Logistics**
- Incident Command Post
- Drop Point
- Reference**
- ⚠ Value at Risk
- Repair**
- Repair Point
- ⚠ Fence - Cut/Damaged
- Communications**
- ◆ Repeater
- Safety**
- ⚠ Hazard
- Water**
- Ⓜ Water Source
- ▭ County or Equivalent
- Transportation**
- Highway
- Road
- 4WD Road
- Trail



1:60,000
NAD 1983
UTM 12N



FC Point Type *	Label	Lat WGS	Long WGS
Aerial Hazard	Price Hospital Helipad	39° 36.379'	-110° 49.997'
Dip Site	Potential Heliwell	39° 41.961'	-110° 55.186'
Drop Point	DP-50	39° 49.470'	-110° 57.157'
Drop Point	DP-53	39° 44.778'	-110° 52.963'
Drop Point	DP-56	39° 42.100'	-110° 52.458'
Drop Point	DP-59	39° 42.078'	-110° 55.173'
Drop Point	DP-61	39° 43.160'	-110° 58.497'
Drop Point	DP-64	39° 45.052'	-110° 59.275'
Hazard		39° 42.575'	-110° 57.797'
Hazard		39° 43.176'	-110° 57.867'
Hazard		39° 43.131'	-110° 57.857'
Hazard		39° 43.040'	-110° 58.430'
Incident Command Post		39° 41.410'	-110° 51.886'
Repeater	C12	39° 46.763'	-110° 53.587'
Repeater	C2	39° 45.369'	-110° 59.196'
Repeater	C21	39° 53.840'	-111° 9.302'
Repeater	C22	39° 41.361'	-110° 56.166'
Repeater	C8	39° 36.891'	-111° 10.572'
Water Source		39° 41.052'	-110° 51.342'
Water Source		39° 40.518'	-110° 51.787'
Water Source	Heliwell	39° 45.032'	-110° 55.188'