

Transportation Map

Bear Fire

UT-VLD-000127

June 18, 2021

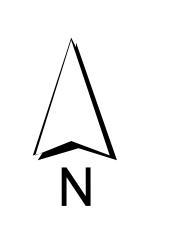
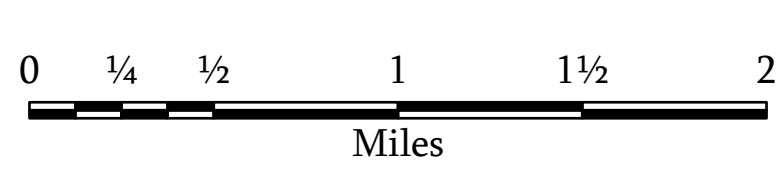
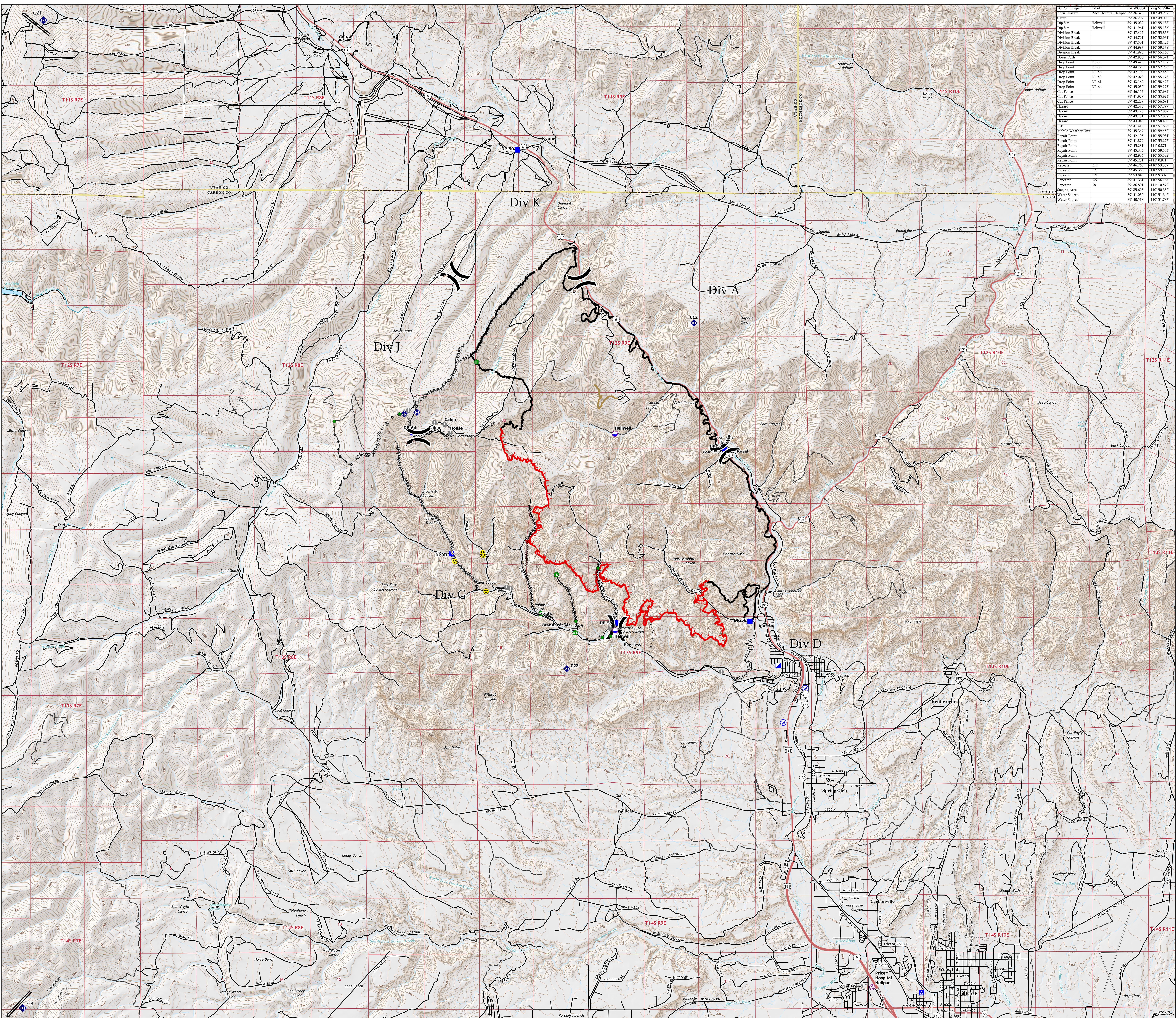


Incident Management Team

12,170 Acres

IR Flight at 0220 hours on 6/18

- Air Operations**
 - Aerial Hazard
 - Dip Site
- Assignment Breaks**
 - Division Break
- Logistics**
 - Incident Command Post
 - Drop Point
 - Camp
 - Staging Area
- Reference**
 - Value at Risk
- Repair**
 - Repair Point
 - Fence - Cut/Damaged
 - Dozer Push
- Communications**
 - Mobile Weather Unit
 - Repeater
- Safety**
 - Hazard
- Water**
 - Water Source
- Ops Completed**
 - Completed Dozer Line
 - Completed Hand Line
 - Completed Road as Line
- Reference**
 - Access or Improved Road
- Repair**
 - Repair Line
- Fire Perimeter**
 - Fire Edge
 - Contained Line
- Transportation**
 - Highway
 - Road
 - 4WD Road
 - Trail
- Event Polygon**
 - Other
 - Prescribed Fire
 - Wildfire Daily Fire Perimeter



1:33,000

Name: NAD 1983 UTM Zone 12N

IC Point Type	Label	Lat WGS84	Long WGS84
Local Hazard	Price Hospital Helipad	39 56 29 N	110 09 00 W
Camp		39 56 29 N	110 09 00 W
Dip Site	Helwell	39 45 02 N	110 58 18 W
Dip Site	Helwell	39 41 50 N	110 58 18 W
Division Break		39 47 42 N	110 55 85 W
Division Break		39 44 51 N	110 52 56 W
Division Break		39 44 59 N	110 58 17 W
Division Break		39 44 59 N	110 58 17 W
Division Break		39 44 59 N	110 58 17 W
Division Break		39 44 59 N	110 58 17 W
Dozer Push		39 42 88 N	110 56 37 W
Drop Point	DP 50	39 46 40 N	110 57 15 W
Drop Point	DP 45	39 47 00 N	110 57 45 W
Drop Point	DP 56	39 44 100 N	110 54 48 W
Drop Point	DP 59	39 42 07 N	110 55 17 W
Drop Point	DP 64	39 47 00 N	110 57 45 W
Drop Point	DP 64	39 44 02 N	110 59 29 W
Cut Fence		39 43 50 N	110 58 00 W
Cut Fence		39 41 52 N	110 55 59 W
Cut Fence		39 42 29 N	110 56 69 W
Hazard		39 43 50 N	110 58 00 W
Hazard		39 43 16 N	110 57 86 W
Hazard		39 43 13 N	110 57 85 W
Hazard		39 43 00 N	110 58 00 W
ICP		39 41 41 N	110 51 88 W
Mobile Weather Unit		39 43 47 N	110 58 00 W
Repair Point		39 42 10 N	110 55 98 W
Repair Point		39 41 32 N	110 55 27 W
Repair Point		39 43 21 N	110 57 87 W
Repair Point		39 45 45 N	110 59 54 W
Repair Point		39 42 95 N	110 55 52 W
Repair Point		39 43 21 N	110 57 87 W
Repeater	C11	39 46 53 N	110 53 58 W
Repeater	C2	39 45 30 N	110 59 18 W
Repeater	C1	39 43 00 N	110 58 00 W
Repeater	C22	39 41 36 N	110 56 16 W
Repeater	U8	39 58 00 N	110 57 57 W
Repeating Area		39 35 05 N	110 50 38 W
Water Source		39 41 02 N	110 51 34 W
Water Source		39 40 15 N	110 51 70 W