

# Pilot Map

## Bear Fire

UT-VLD-000127

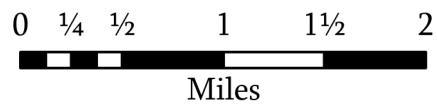
June 18, 2021



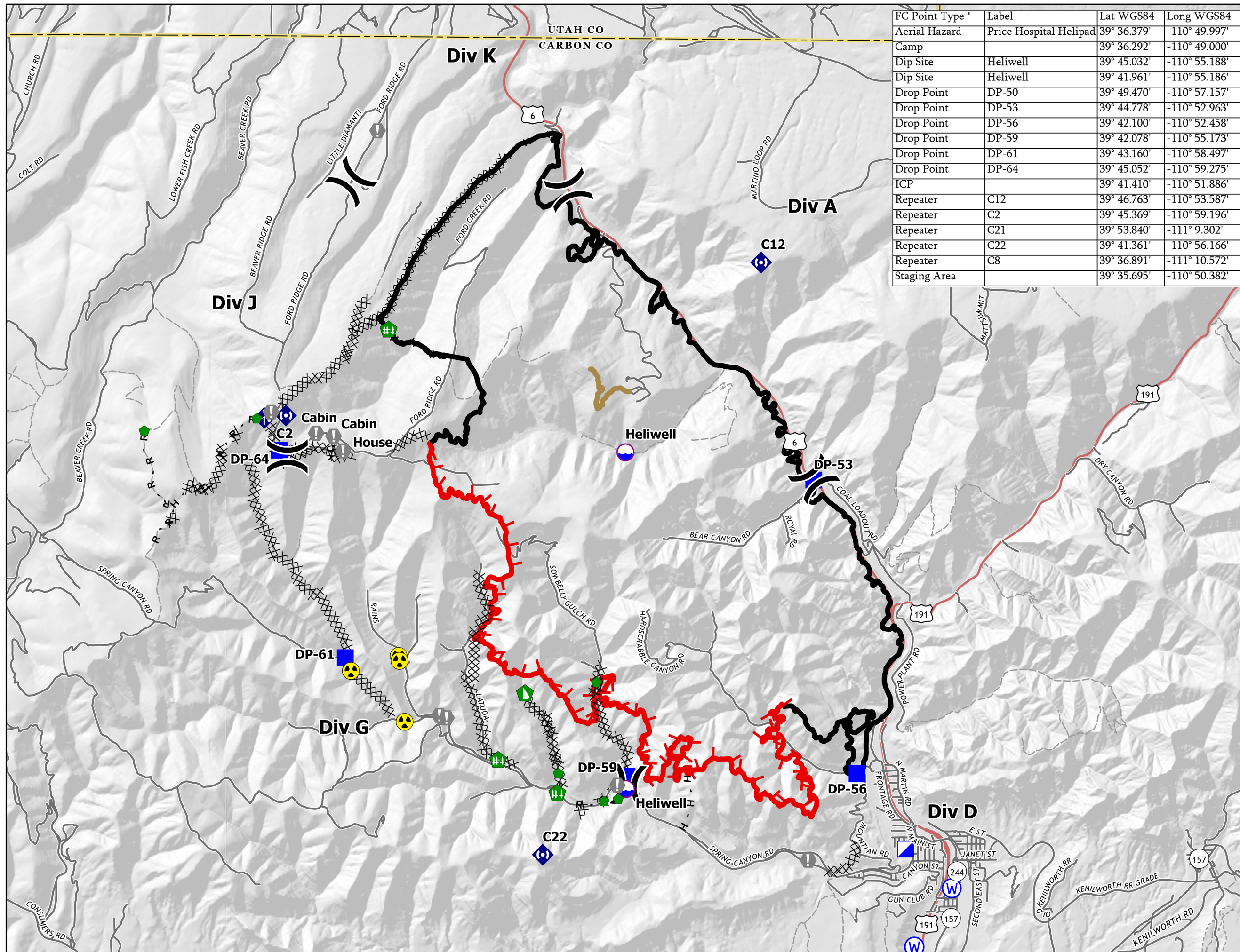
- Dip Site
- Division Break
- Incident Command Post
- Drop Point
- Value at Risk
- Repair Point
- Fence - Cut/Damaged
- Dozer Push
- Mobile Weather Unit
- Repeater
- Hazard
- Water Source
- Completed Dozer Line
- Completed Hand Line
- Completed Road as Line
- Access or Improved Road
- Repair Line
- Fire Edge
- Contained Line
- County or Equivalent

### Transportation

- Highway
- Road
- 4WD Road
- Trail



1:60,000  
NAD 1983  
UTM 12N



| FC Point Type * | Label                  | Lat WGS84   | Long WGS84    |
|-----------------|------------------------|-------------|---------------|
| Aerial Hazard   | Price Hospital Helipad | 39° 36.379' | -110° 49.997' |
| Camp            |                        | 39° 36.292' | -110° 49.000' |
| Dip Site        | Heliwell               | 39° 45.032' | -110° 55.188' |
| Dip Site        | Heliwell               | 39° 41.961' | -110° 55.186' |
| Drop Point      | DP-50                  | 39° 49.470' | -110° 57.157' |
| Drop Point      | DP-53                  | 39° 44.778' | -110° 52.963' |
| Drop Point      | DP-56                  | 39° 42.100' | -110° 52.458' |
| Drop Point      | DP-59                  | 39° 42.078' | -110° 55.173' |
| Drop Point      | DP-61                  | 39° 43.160' | -110° 58.497' |
| Drop Point      | DP-64                  | 39° 45.052' | -110° 59.275' |
| ICP             |                        | 39° 41.410' | -110° 51.886' |
| Repeater        | C12                    | 39° 46.763' | -110° 53.587' |
| Repeater        | C2                     | 39° 45.369' | -110° 59.196' |
| Repeater        | C21                    | 39° 53.840' | -111° 9.302'  |
| Repeater        | C22                    | 39° 41.361' | -110° 56.166' |
| Repeater        | C8                     | 39° 36.891' | -111° 10.572' |
| Staging Area    |                        | 39° 35.695' | -110° 50.382' |