

Transportation Map

Bear Fire UT-VLD-000127

June 18, 2021

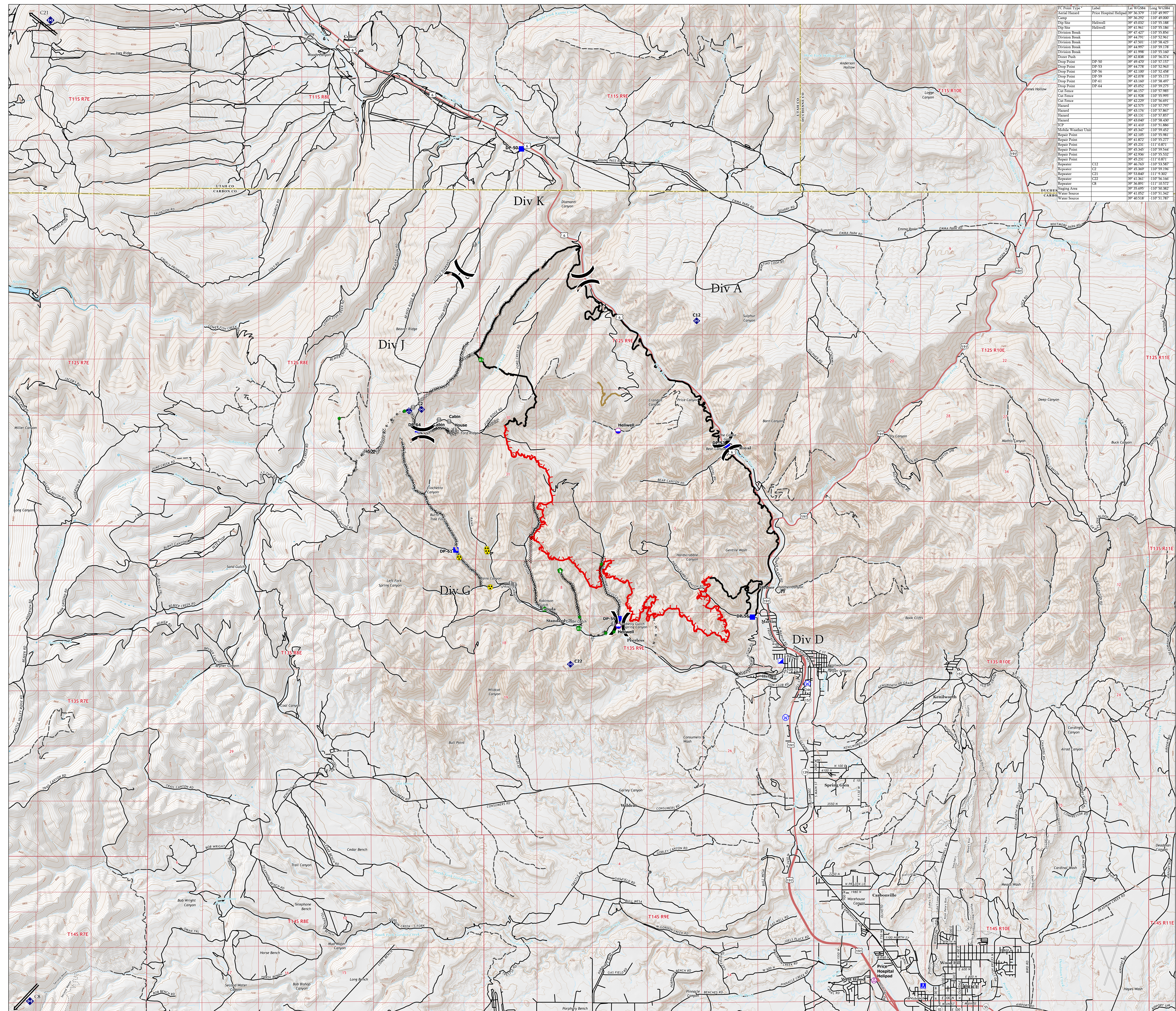


Incident Management Team

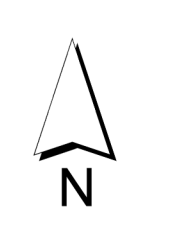
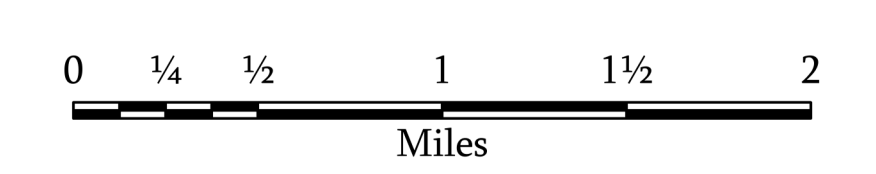
12,170 Acres

IR Flight at 0220 hours on 6/18

- Air Operations**
 - Aerial Hazard
 - Dip Site
- Assignment Breaks**
 - Division Break
- Logistics**
 - Incident Command Post
 - Drop Point
 - Camp
 - Staging Area
- Reference**
 - Value at Risk
- Repair**
 - Repair Point
 - Fence - Cut/Damaged
 - Dozer Push
- Communications**
 - Mobile Weather Unit
 - Repeater
- Safety**
 - Hazard
- Water**
 - Water Source
- Ops Completed**
 - Completed Dozer Line
 - Completed Hand Line
 - Completed Road as Line
- Reference**
 - Access or Improved Road
- Repair**
 - Repair Line
- Fire Perimeter**
 - Fire Edge
 - Contained Line
- Transportation**
 - Highway
 - Road
 - 4WD Road
 - Trail
- Event Polygon**
 - Other
 - Prescribed Fire
 - Wildfire Daily Fire Perimeter



FC Point Type	Label	Lat WGS84	Long WGS84
Central Hazard	Price Hospital/Hellpad	39° 56' 39"	-110° 59' 59"
Camp		39° 56' 29"	-110° 59' 00"
Dip Site	Hellwell	39° 45' 02"	-110° 58' 18"
Dip Site	Hellwell	39° 41' 56"	-110° 58' 18"
Division Break		39° 47' 42"	-110° 55' 85"
Division Break		39° 44' 51"	-110° 57' 36"
Division Break		39° 45' 50"	-110° 58' 42"
Division Break		39° 44' 59"	-110° 58' 17"
Division Break		39° 43' 98"	-110° 58' 18"
Dozer Push		39° 42' 88"	-110° 56' 37"
Drop Point	DP-50	39° 49' 40"	-110° 57' 15"
Drop Point	DP-53	39° 47' 28"	-110° 57' 56"
Drop Point	DP-56	39° 41' 100"	-110° 53' 45"
Drop Point	DP-59	39° 42' 07"	-110° 53' 17"
Drop Point	DP-61	39° 43' 16"	-110° 58' 49"
Drop Point	DP-64	39° 43' 02"	-110° 59' 27"
Cut Fence		39° 43' 17"	-110° 57' 58"
Cut Fence		39° 41' 92"	-110° 55' 59"
Cut Fence		39° 42' 29"	-110° 56' 69"
Hazard		39° 42' 35"	-110° 57' 79"
Hazard		39° 44' 17"	-110° 57' 86"
Hazard		39° 44' 131"	-110° 57' 85"
Hazard		39° 43' 48"	-110° 58' 43"
ICP		39° 41' 410"	-110° 51' 886"
Mobile Weather Unit		39° 43' 547"	-110° 58' 492"
Repair Point		39° 42' 105"	-110° 55' 981"
Repair Point		39° 41' 872"	-110° 55' 277"
Repair Point		39° 43' 211"	-110° 57' 871"
Repair Point		39° 45' 345"	-110° 59' 544"
Repair Point		39° 42' 956"	-110° 55' 532"
Repair Point		39° 42' 211"	-110° 57' 871"
Repeater	C12	39° 46' 763"	-110° 53' 587"
Repeater	C2	39° 45' 369"	-110° 59' 196"
Repeater	C21	39° 43' 161"	-110° 57' 377"
Repeater	C22	39° 43' 361"	-110° 56' 166"
Repeater	C23	39° 43' 891"	-110° 57' 377"
Staging Area	CA	39° 35' 695"	-110° 50' 382"
Water Source		39° 41' 852"	-110° 51' 342"
Water Source		39° 40' 518"	-110° 51' 797"



1:33,000

Name: NAD 1983 UTM Zone 12N