

# Transportation Map

## Bear Fire

UT-VLD-000127

June 19, 2021

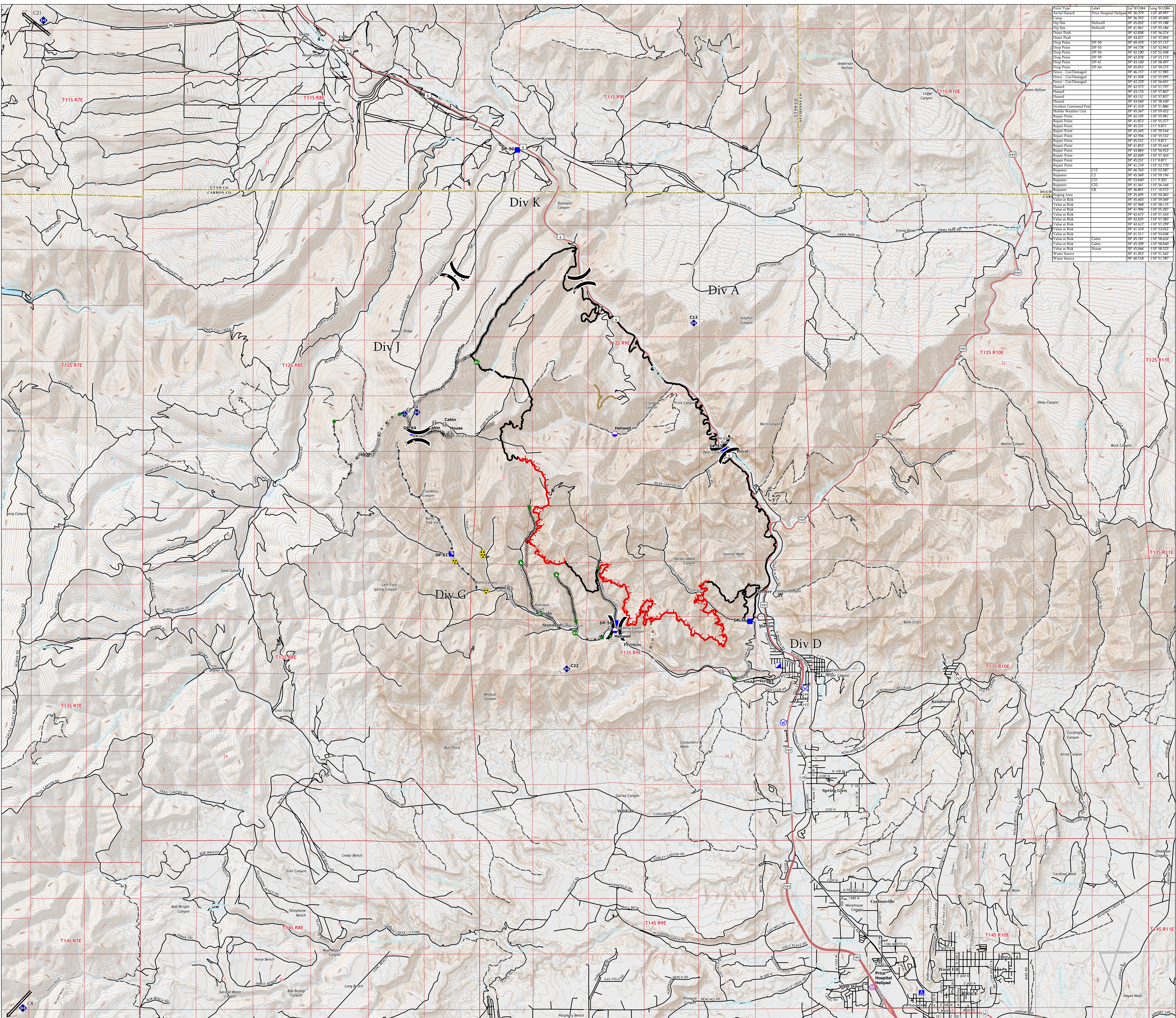


Incident Management Team

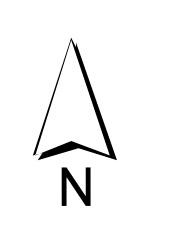
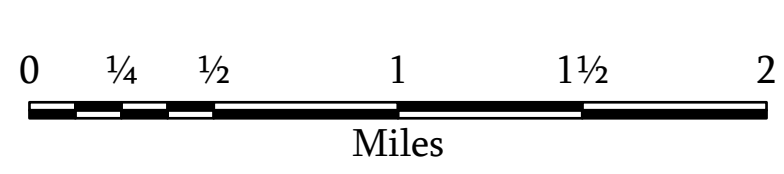
12,170 Acres

IR Flight at 0220 hours on 6/18

- Air Operations**
  - Aerial Hazard
  - Dip Site
- Assignment Breaks**
  - Division Break
- Logistics**
  - Incident Command Post
  - Drop Point
  - Camp
  - Staging Area
- Reference**
  - Value at Risk
- Repair**
  - Repair Point
  - Fence - Cut/Damaged
  - Dozer Push
- Communications**
  - Mobile Weather Unit
  - Repeater
- Safety**
  - Hazard
- Water**
  - Water Source
- Ops Completed**
  - Completed Dozer Line
  - Completed Hand Line
  - Completed Road as Line
- Reference**
  - Access or Improved Road
- Repair**
  - Repair Line
- Fire Perimeter**
  - Fire Edge
  - Contained Line
- Transportation**
  - Highway
  - Road
  - 4WD Road
  - Trail
- Event Polygon**
  - Other
  - Prescribed Fire
  - Wildfire Daily Fire Perimeter



Point Type	Label	Lat WGS84	Long WGS84
Aerial Hazard	Price Hospital Helipad	39 36 292	-110 49 000
Dip Site	Helwell	39 45 002	-110 55 188
Dip Site	Helwell	39 41 961	-110 55 188
Dozer Push		39 42 838	-110 56 374
Dozer Push		39 43 027	-110 57 094
Drop Point	DP-50	39 44 778	-110 57 963
Drop Point	DP-56	39 43 100	-110 57 290
Drop Point	DP-59	39 42 078	-110 55 173
Drop Point	DP-61	39 43 160	-110 58 497
Drop Point	DP-64	39 43 925	-110 57 271
Fence - Van Dammed		39 46 157	-110 57 985
Fence - Cut/Damaged		39 41 928	-110 55 995
Hazard		39 42 975	-110 57 797
Hazard		39 43 176	-110 57 760
Hazard		39 43 131	-110 57 857
Hazard		39 43 020	-110 58 430
Incident Command Post		39 41 110	-110 57 880
Mobile Weather Unit		39 45 347	-110 59 452
Repair Point		39 42 105	-110 55 981
Repair Point		39 41 872	-110 55 388
Repair Point		39 43 231	-111 03 871
Repair Point		39 43 349	-110 57 941
Repair Point		39 43 950	-110 55 532
Repair Point		39 43 231	-111 03 871
Repair Point		39 43 852	-110 55 444
Repair Point		39 43 884	-110 56 922
Repair Point		39 42 609	-110 57 363
Repair Point		39 43 231	-111 03 871
Repeater		39 41 210	-110 57 270
Repeater	C12	39 46 763	-110 53 388
Repeater	C2	39 42 829	-110 57 383
Repeater	C21	39 43 820	-111 03 802
Repeater	C23	39 43 501	-110 56 180
Repeater	C8	39 36 801	-111 10 572
Staging Area		39 38 095	-110 50 382
Value at Risk		39 47 568	-110 58 115
Value at Risk		39 41 996	-110 55 287
Value at Risk		39 42 815	-110 57 443
Value at Risk		39 42 835	-110 57 383
Value at Risk		39 42 822	-110 57 290
Value at Risk		39 41 310	-110 53 052
Value at Risk		39 41 311	-110 53 058
Value at Risk	Cabin	39 43 181	-110 58 631
Value at Risk	Cabin	39 45 209	-110 58 840
Water Source		39 41 052	-110 58 223
Water Source		39 40 518	-110 51 787



1:33,000

Name: NAD 1983 UTM Zone 12N