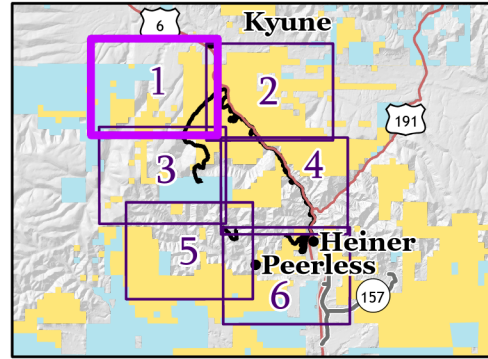


Bear Fire



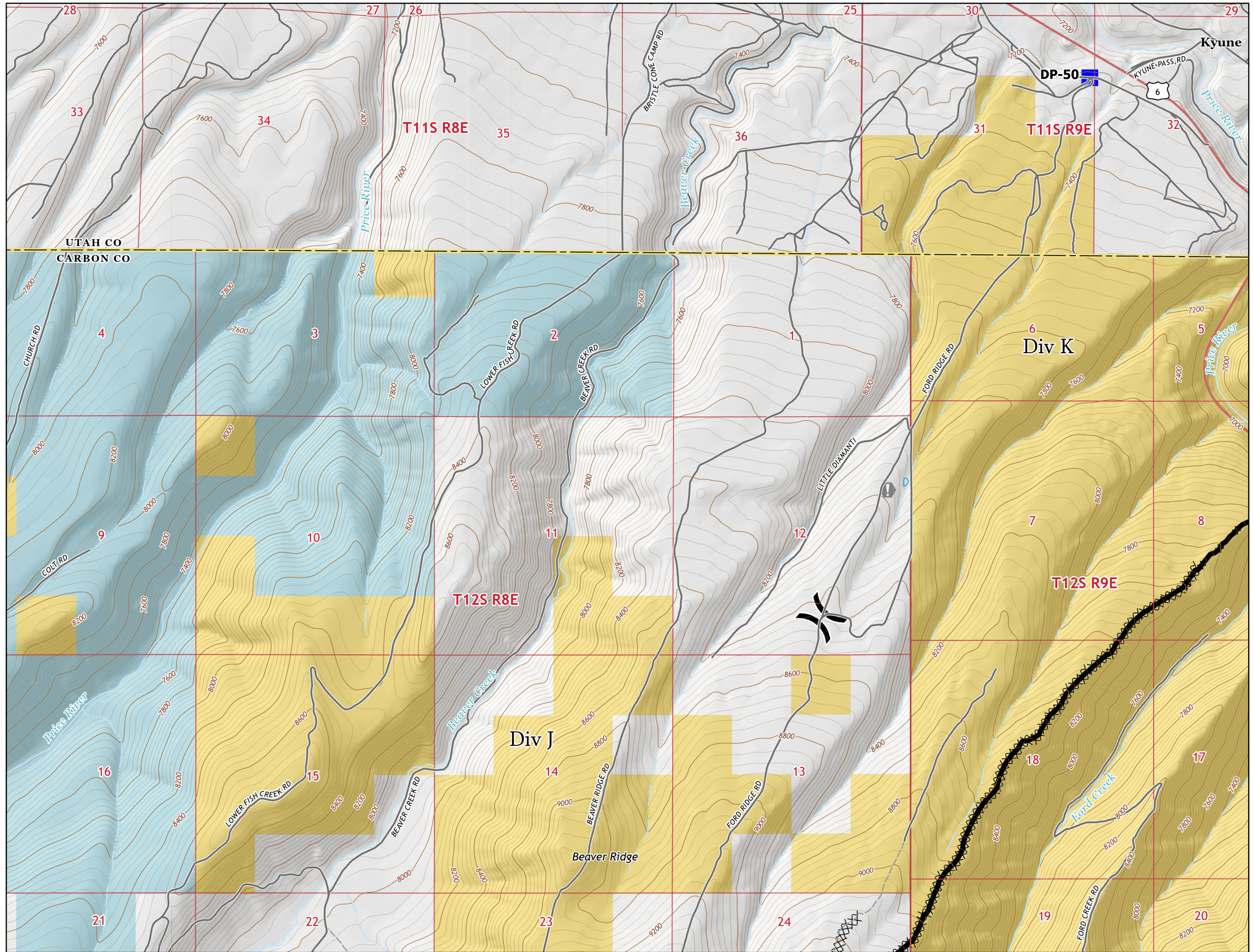
Page 1 of 6

- Division Break
 - Drop Point
 - Value at Risk
 - Completed Dozer Line
 - Completed Hand Line
 - Contained Line
- Transportation**
- Highway
 - Road
 - 4WD Road
- Land Status**
- Bureau of Land Management (BLM)
 - State

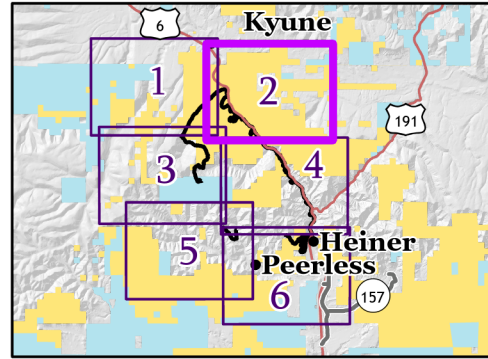


1:24,000

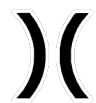






Name: NAD 1983 UTM Zone 12N



Bear Fire



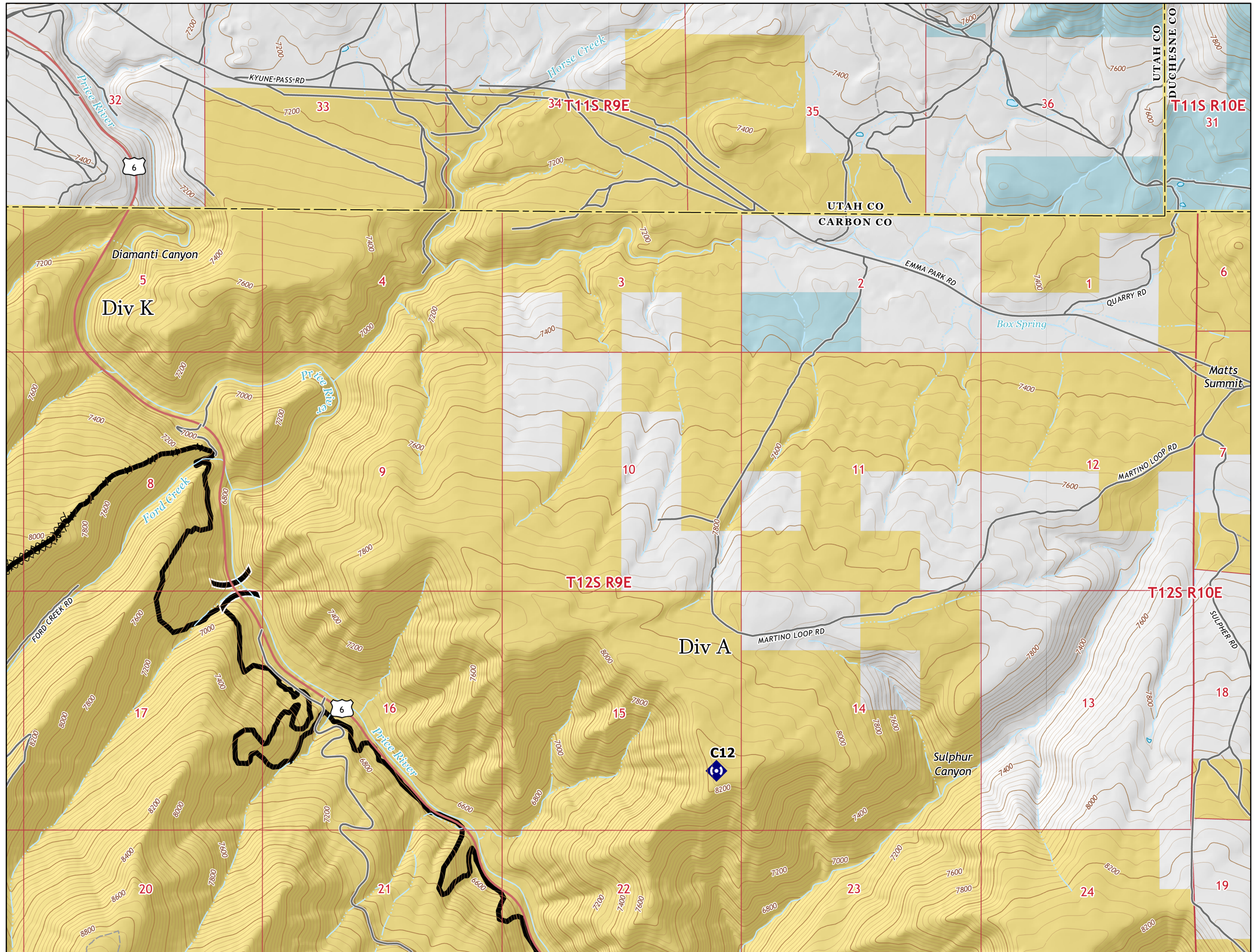
Page 2 of 6

-  Division Break
-  Repeater
-  Completed Dozer Line
-  Completed Hand Line
-  Repair Line
-  Contained Line
- Transportation**
-  Highway
-  Road
-  4WD Road
- Land Status**
-  Bureau of Land Management (BLM)
-  State

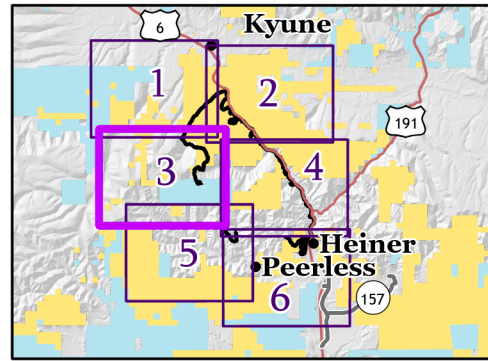


1:24,000

Name: NAD 1983 UTM Zone 12N



Bear Fire



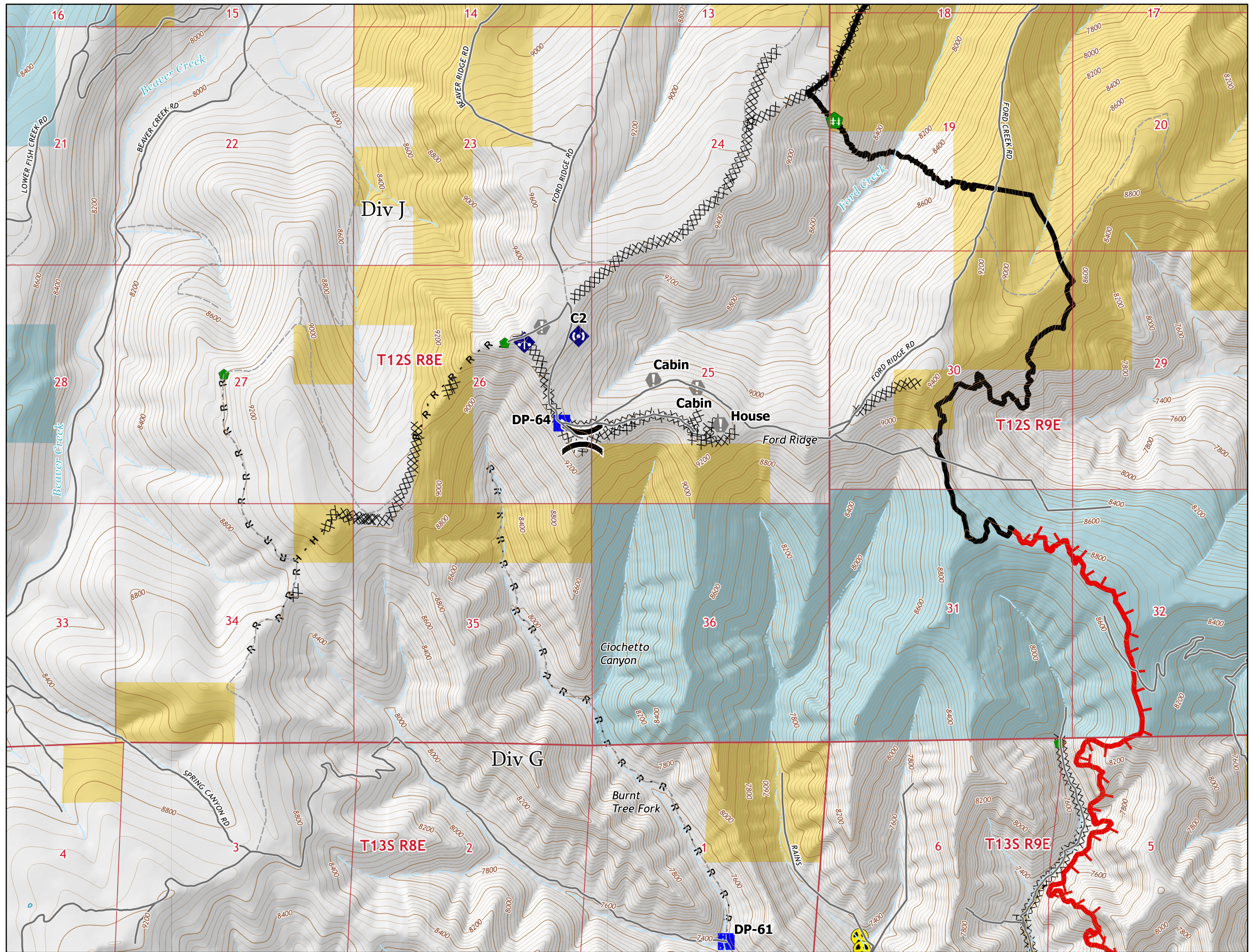
Page 3 of 6

- Division Break
 - Drop Point
 - Value at Risk
 - Repair Point
 - Fence - Cut/Damaged
 - Dozer Push
 - Mobile Weather Unit
 - Repeater
 - Hazard
 - Completed Dozer Line
 - Completed Hand Line
 - Completed Road as Line
 - Repair Line
 - Fire Edge
 - Contained Line
- Transportation**
- Road
 - 4WD Road
- Land Status**
- Bureau of Land Management (BLM)
 - State

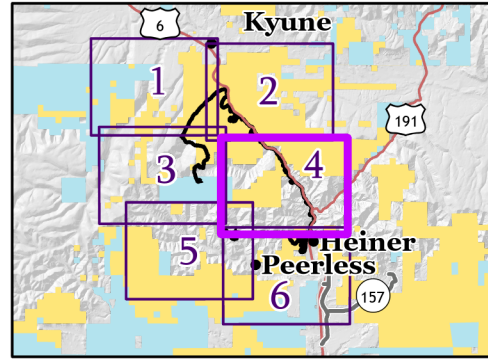


1:24,000

Name: NAD 1983 UTM Zone 12N

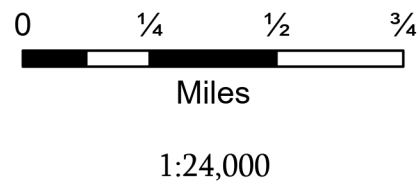


Bear Fire

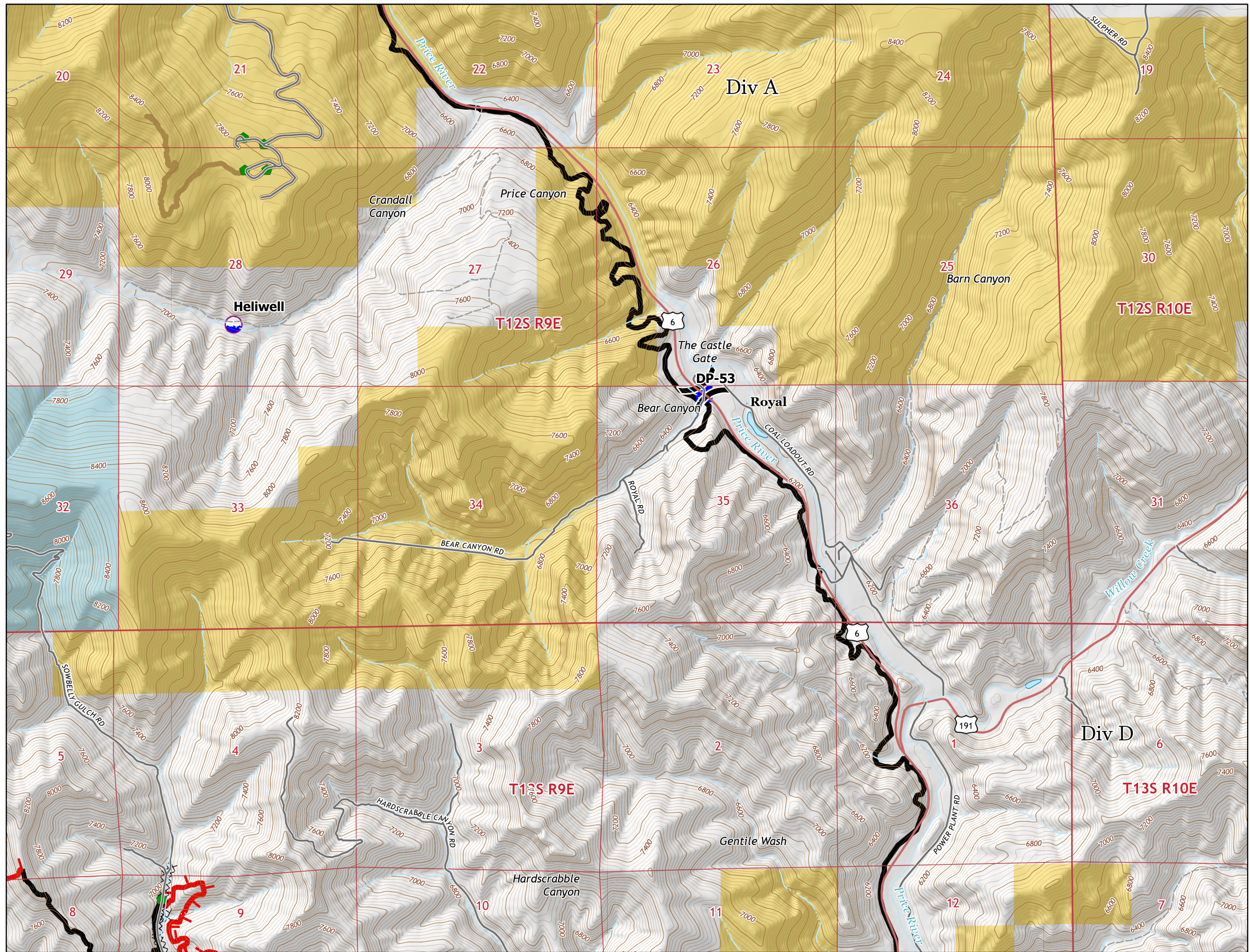


Page 4 of 6

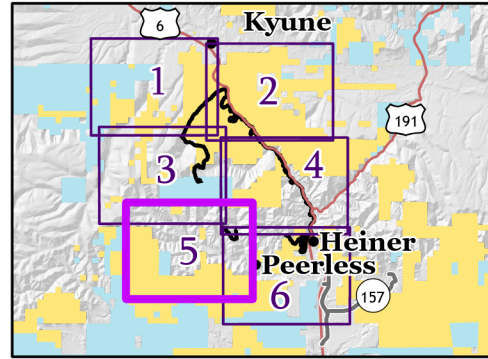
-  Dip Site
 -  Division Break
 -  Drop Point
 -  Repair Point
 -  Dozer Push
 -  Completed Dozer Line
 -  Repair Line
 -  Fire Edge
 -  Contained Line
- Transportation**
-  Highway
 -  Road
 -  4WD Road
- Land Status**
-  Bureau of Land Management (BLM)
 -  State












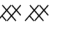
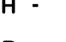








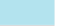
Name: NAD 1983 UTM Zone 12N



Bear Fire



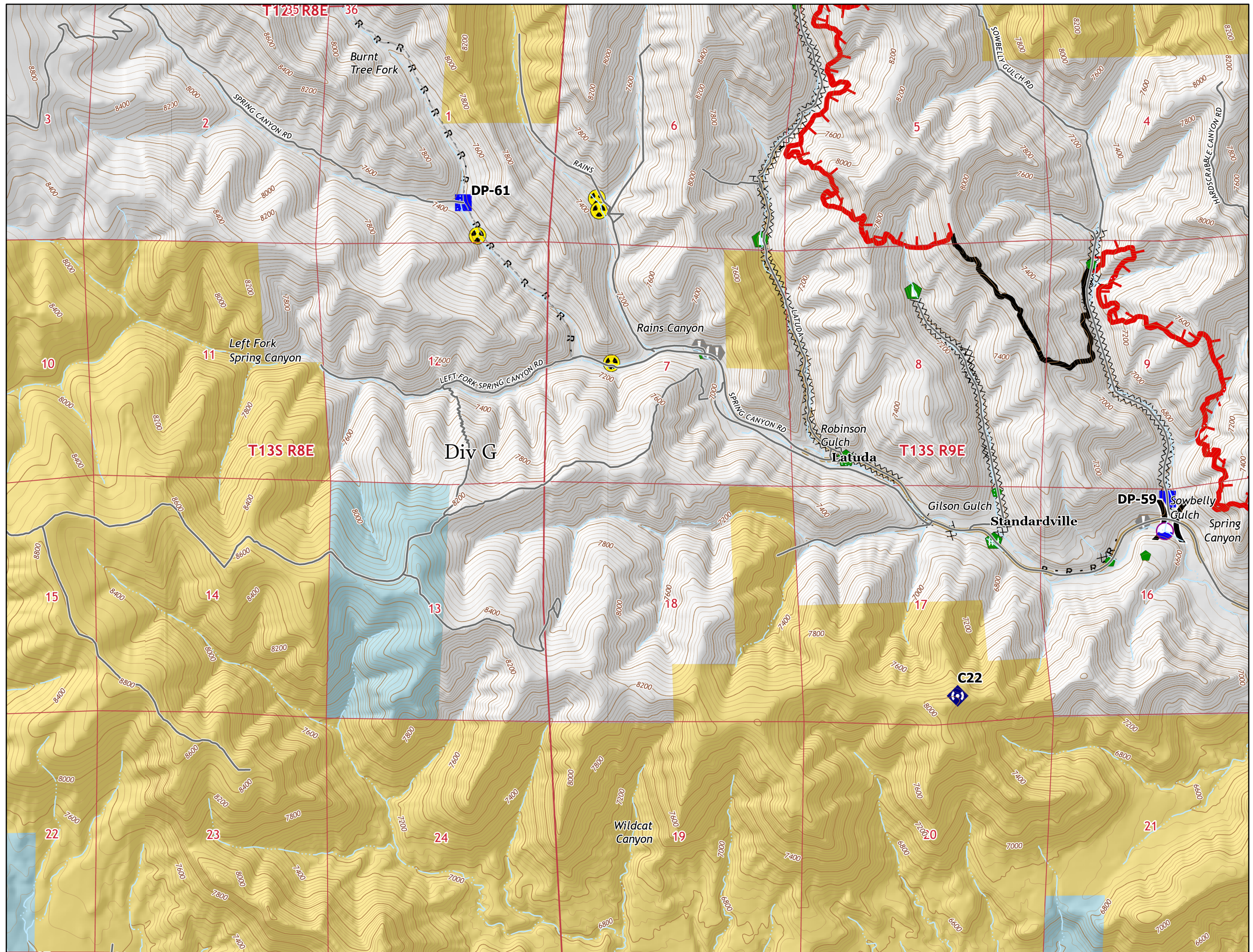
Page 5 of 6

-  Dip Site
 -  Division Break
 -  Drop Point
 -  Value at Risk
 -  Repair Point
 -  Fence - Cut/Damaged
 -  Dozer Push
 -  Repeater
 -  Hazard
 -  Completed Dozer Line
 -  Completed Hand Line
 -  Completed Road as Line
 -  Access or Improved Road
 -  Repair Line
 -  Fire Edge
 -  Contained Line
- Transportation**
-  Road
 -  4WD Road
- Land Status**
-  Bureau of Land Management (BLM)
 -  State

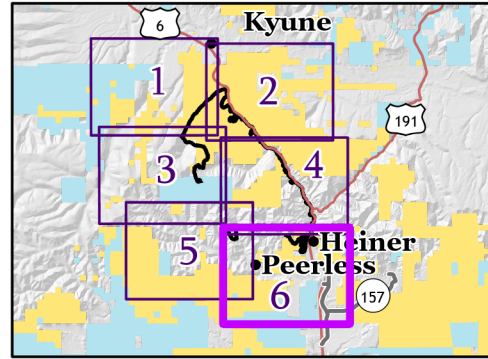


1:24,000

Name: NAD 1983 UTM Zone 12N



Bear Fire



Page 6 of 6

- Dip Site
 - Division Break
 - Incident Command Post
 - Drop Point
 - Value at Risk
 - Repair Point
 - Fence - Cut/Damaged
 - Repeater
 - Water Source
 - Completed Dozer Line
 - Completed Hand Line
 - Completed Road as Line
 - Access or Improved Road
 - Repair Line
 - Fire Edge
 - Contained Line
- Transportation**
- Highway
 - Road
 - 4WD Road
- Land Status**
- Bureau of Land Management (BLM)
 - State



1:24,000

Name: NAD 1983 UTM Zone 12N

